

SPACEMASTER® SXR ROPE HOISTS

R&M's Spacemaster SXR rope hoist combines the powerful features of its predecessor and the cutting-edge technology of the future. A newly revamped design and set of features coupled with the industry-leading space savings and headroom you've come to expect from R&M.



RISE ABOVE™

RISE TO THE CHALLENGE OF YOUR NEXT PROJECT

SXR Rope Hoist

GROW WITH THE FUTURE OF LIFTING TECHNOLOGY

Trolley Travel Motion

- Inverter controls for infinitely variable trolley travel speed control are provided as a part of standard offering
- Inverter performance, commissioning and troubleshooting info available via easy-to-use smart phone app

Hoist Panel

Easier maintenance and commissioning with all controls in one panel

Trolley Wheels with Guide Rollers

Reduces girder beam wear compared to standard flanged wheels

Counterweights

Standard for hoist balancing across a wide range of trolley beam widths

Hoist Motor Gearbox

- Ground spur gears enable quiet, low-vibration operation
- Permanently sealed housing, lubricated to last the entire designed working period of the hoist

Hook and Block

- DIN hook profile accomodates a wide range of below the hook devices
- Ergonomic hand holds protect fingers and improve operator efficiency

Inclinometer

Measures the angle of the rope in all directions to prevent dangerous side-pulling

Belt Drive

Constant trolley traction on girder with two driven wheels for challenging environments

Thrust rocker

Optional thrust rocker in place of counterweighting for maximum traction in high dust or outdoor environments

Rope Guides and Sheaves

- Easy access to upper sheaves and rope anchorages for reduced repair and inspection time
- Enhanced resilience of durable, acid-resistant composite material
- Protection against overwrapping
- Off-center picking of up to 4° without contacting the guide for smooth operation and reduced wear

Rope Drum

Wide diameter design increases rope life and minimizes hook drift for reduced maintenance costs and improved operating precision

Hoist Motor and Brake

- Designed and built in-house specifically for hoisting applications
- Located outboard of the rope drum for faster service and inspection

Drum Protection

Two-piece enclosed rope drum cover for protection against dust and moisture for longer hoist life

INNOVATIVE LIFTING SOLUTIONS FOR SAFE AND FORWARD-LOOKING OPERATIONS

R&M is proud to introduce the SXR hoist to the well-known Spacemaster line. This innovation in lifting technology combines industry-leading features with key enhancements that address the feedback we've heard about its predecessor. This versatile hoist integrates advanced controls, integrated communication via the OLI app and visibility across the entire crane system. Designed with ease of maintenance in mind, this hoist retains the reliable cooling and insulation you trust, the SXR enables cost-effective, high-performance operation for applications across industries and environments.

TECHNICAL FEATURES AND OPTIONS

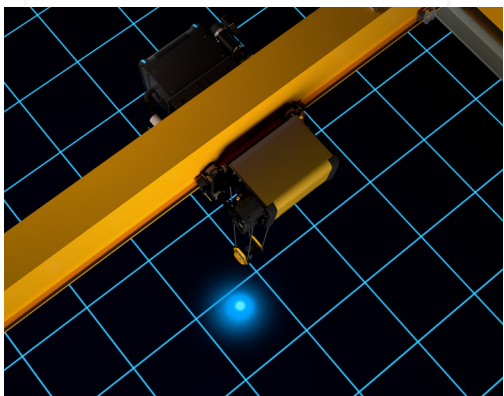
Enhanced protection for operators and equipment

Condition Monitoring

The HoistMonitor® Enclave condition monitoring device is standard with the Spacemaster SXR hoist, and it gives you up-to-date operating data and evaluations throughout the SXR's operating cycle. Full transparency on utilization, usage, risk of downtimes and service life means facilities can make data-driven maintenance decisions.

Blue Safety Light

Promote greater operator safety with the SXR's load spotting light. A blue dot of light is projected on the floor to indicate the hook position, ensuring that everyone on the workfloor has clear line of sight to the hook and load's positioning. This allows operators to predict hook placement before attaching it to the load, which is especially useful in tight spaces where maneuvering the load is difficult.

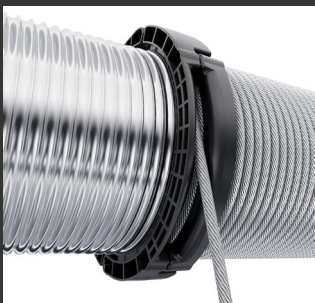


YOUR LIFT - YOUR ROPE - YOUR CHOICE

Choose between the industry-standard steel wire ropes or the premium, lower-maintenance synthetic rope. Although new to the overhead crane industry, synthetic ropes have been used successfully in harsh and corrosive environments, such as maritime environments, for decades.

About Synthetic Ropes

Crafted from high-modulus polyethylene fibers and 85% lighter than steel, synthetic rope suits indoor and outdoor-under-roof environments, operates efficiently within a temperature range of 14°F to 113°F (-10°C to 45°C) and requires no lubrication. Synthetic ropes also offer expanded protection beyond steel wire rope in some corrosive environments, without the reduced breaking strength associated with stainless steel rope.



OLI Comm: CONNECTED FEATURES

Faster cycle times. Improved operator efficiency. Greater workplace safety.

Control and monitor all critical functions with SXR's OLI Comm protocols:

SXR's OLI Comm uses standard industrial communication protocol to create a network where all devices on the crane communicate seamlessly with one another for all crane operations. This unified network enables powerful smart features while simplifying troubleshooting and giving a holistic view of the crane's health.



Anti-Sway Technology

Prevent and correct any load sway with active counter-movements of the crane. Sway correction is based on active rope angle measurement.



Follow-Me

Position the crane over the load by guiding the hook by hand for reduced cycle time.



Slack Rope Protection

Continuously monitor rope tension: automatic cut-off of the hoist motor when slack rope is detected.



Hook Centering

Automatically positions the crane hook directly above the load. Faster load cycles and improved ease of operation.



Load Restricted Area

Set defined areas of the factory floor where the crane can only be operated below the rated capacity.



Side Pull Prevention

Rope angle monitoring automatically prevents lifting if rope angle exceeds 4° from vertical, to prevent damage to critical lifting components.



Restricted Zones

Define restricted zones where the hoist may not enter, for example, to avoid machinery or structures that are on the factory floor.



Tandem Control

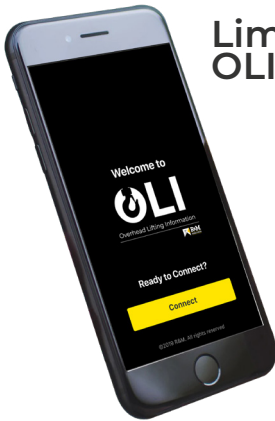
Electronically synchronized lifting across two hoists for precisely lifting a single load in tandem.

Further options for customized configuration:

- Radio control
- Second hoist brake for SXR 3, 5, 10
- Synthetic rope
- Ramshorn hook
- IP66 protection
- Stand-by heating
- Large load display
- Rain covers
- Limit switches
- Anti-collision protection
- Rail sweeps
- And more

STAY CONNECTED WITH OLI PRO+ FOR SXR

Hoist Monitoring, Communication and an Ecosystem of Data



Limited access to your data is a thing of the past with the OLI app and its advanced monitoring system: OLI Comms.

- Access performance data in real-time
- Use real diagnostics to predict maintenance needs
- Address faults and safety concerns proactively
- Reduce maintenance time and visits
- Plan for service downtime in advance to minimize costs

Which OLI is Right for You?

OLI App	Free app available on iOS and Google Play stores. App is able to be used with HoistMonitor Enclave devices, when the devices are equipped with the appropriate hardware.
OLI Comm	Combination of the HoistMonitor Enclave and gateway modem devices provided with the equipment, which facilitates the usage of all OLI digital services, including OLI Pro and OLI Pro+.
OLI Comm+	Uses a communication protocol to gather data from HoistMonitor Enclave and ControlMaster inverters on the crane. This creates an ecosystem of information that improves your ability to predict maintenance needs and indicate areas for performance improvement. OLI Comm+ facilitates the usage of all OLI digital services and enables usage of connected features.
OLI Pro	Additional subscription within the OLI app, which allows technicians to edit parameters via the mobile app while connected to the HoistMonitor Enclave device via WiFi or HoistMonitor device via Bluetooth.
OLI Pro+	Additional subscription within the OLI app, which allows service companies to remotely gather and view HoistMonitor Enclave data offsite through cloud services.

INVERTER CONTROLS COMPLETE THE OLI COMMS ECOSYSTEM

OLI Comms uses a communication protocol to gather data from all the electronic devices on your SXR crane. This creates an ecosystem of information that improves your ability to predict maintenance needs and indicate areas for performance improvement. SXR is available with a wide range of inverter and speed options to meet your needs.

Trolley and Bridge Travel Controls:

Inverter controls are R&M’s standard for trolley and bridge travel motions. Inverter controls reduce load swing and eliminate brake wear.

Hoisting Controls:

Two-speed hoisting controls are the standard for the SXR. ControlMaster Edge hoisting inverters offer extended speed ranges and reduced brake wear. ControlMaster Elite hoisting inverter controls offer the same advantages as the Edge inverters, plus expanded Smart features and high-precision speed control.

Why choose R&M’s Spacemaster SXR?

- Maintenance-friendly, robust mechanical design
- Data-driven maintenance with HoistMonitor Enclave and OLI Comm network
- Connected features support operator efficiency and safety
- Core of lifting, drive train components are designed and built in-house, specifically for hoisting applications
- Options for tough environments, like synthetic rope, thrust rocker and belt drive



Frame Size	Reeving Type*	Capacity [ton / kg]								Available Lifting Height	Hoisting Speed**
		1.0 / 1000	1.5 / 1500	2.0 / 2000	2.5 / 2500	3.0 / 3000	5.0 / 5000	7.5 / 7500	10.0 / 10000	Feet (meters)	fpm (mpm)
SXR 3	021									42'-7" (13); 59'-0" (18)	40/6.6 (12/2)
	041									21'-3" (6.5) /; 29'-6" (9)	20/3.3 (6/1)
SXR 5	021									42'-7" (13); 59'-0" (18); 78'-8" (24)	40/6.6 (12/2)
	041									21'-3" (6.5); 29'-6" (9); 39'-4" (12)	20/3.3 (6/1)
SXR 10	021									59'-0" (18); 78'-8" (24); 98'-5" (30)	40/6.6 (12/2)
	041									29'-6" (9); 39'-4" (12); 49'-2" (15)	20/3.3 (6/1)

* 021 = two part single reeved / 041 = four part single reeved ** Standard speed with two-speed contactor control

All components are CSA C/US approved

Certification from CSA International also indicates that the SXR wire rope hoist manufacturing sites conform to a range of compliance measures and are subject to periodic follow-up inspections to verify conformance. These same manufacturing sites are also ISO9001 certified.

Quality assurance with all R&M equipment is very important to us. All equipment is tested locally prior to shipment. Units are shipped with a test certificate, owner's manual and a parts list.



RISE ABOVE WITH R&M MATERIALS HANDLING, INC.

R&M has been innovating since 1929. With our heritage of innovation, our wire rope and chain hoist products have consistently set the crane industry norms. Our cutting-edge solutions will help you to rise above your material handling challenges. You deserve the best performance possible; let us help you achieve it!

R&M Materials Handling, Inc. may alter or amend the technical specifications identified herein at any time with or without notice.

R&M Materials Handling, Inc. is a proud member of the following organizations:



R&M Materials Handling, Inc. | 4400 Gateway Boulevard, Springfield, Ohio 45502 | 1-800-955-9967
www.rmhoist.com | © 2025 R&M Materials Handling, Inc. | Bulletin #SXR 02/05/2025