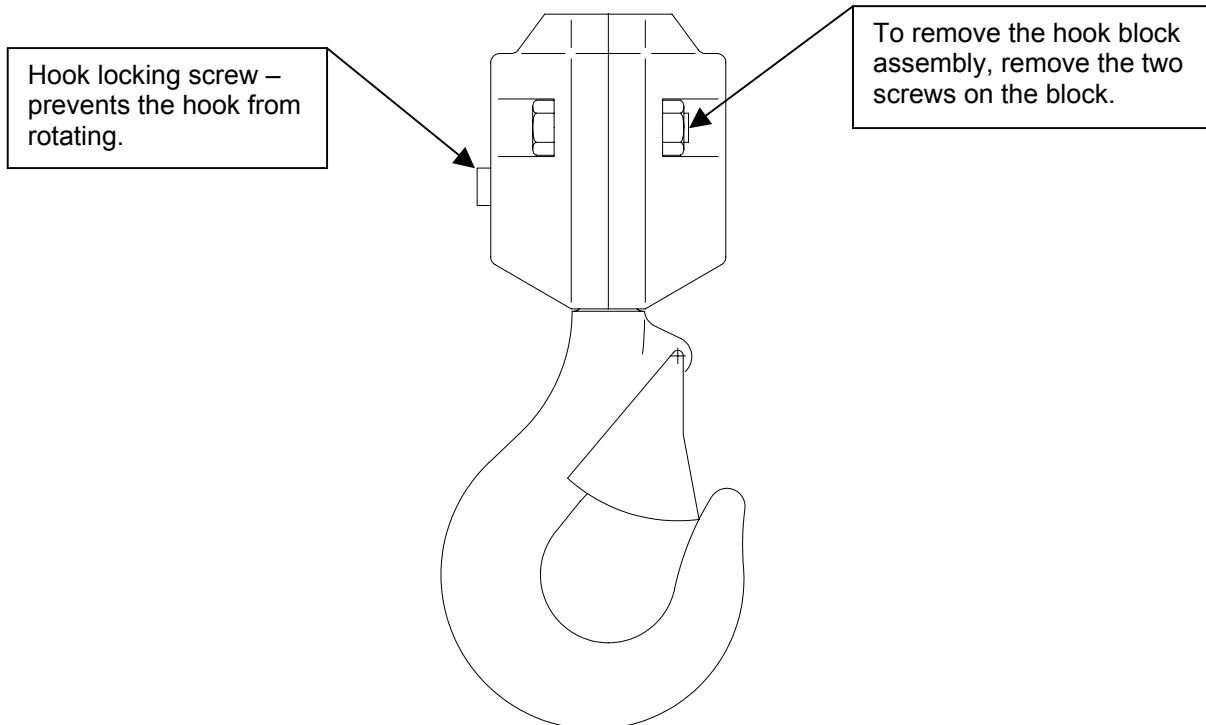
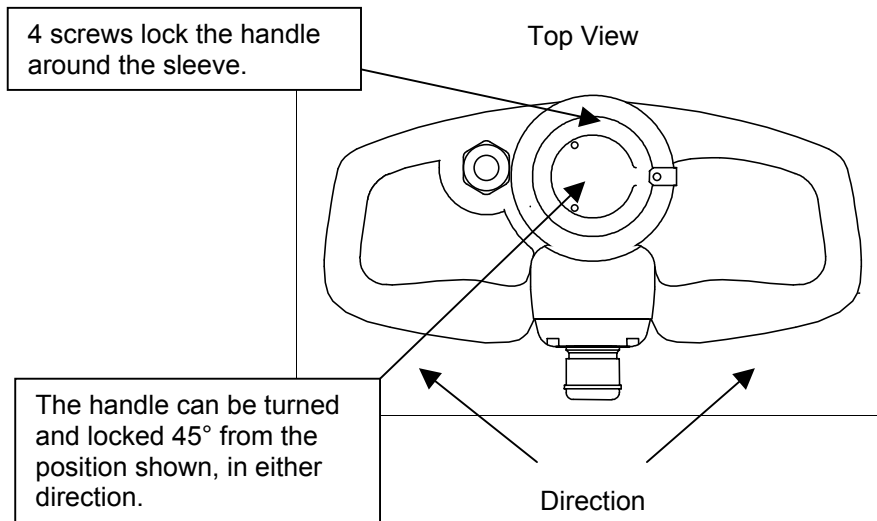


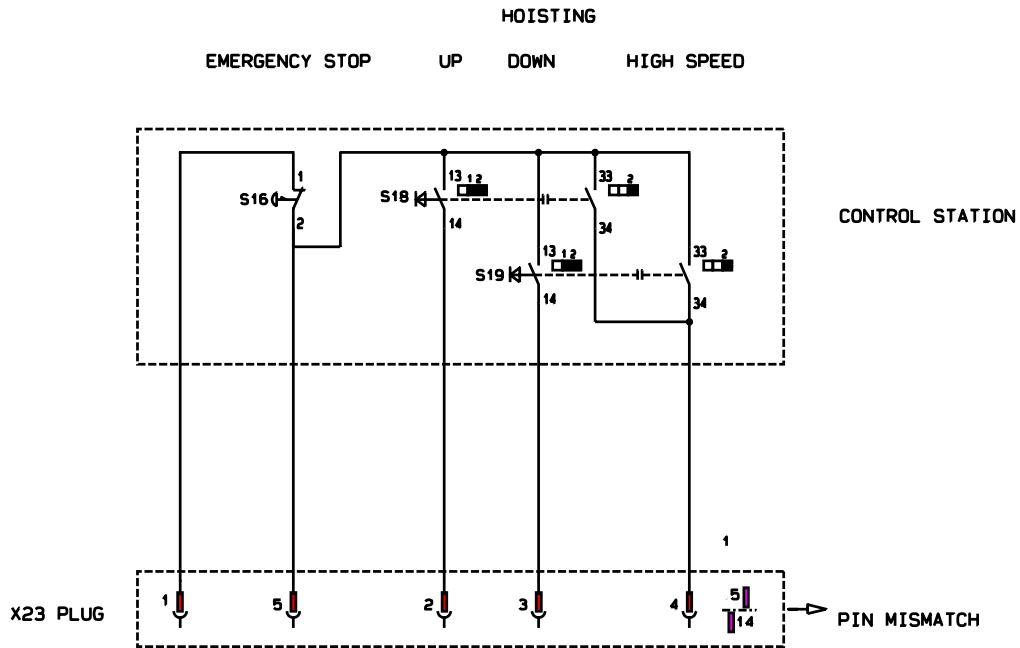
1.5 Setup





2 Electrical

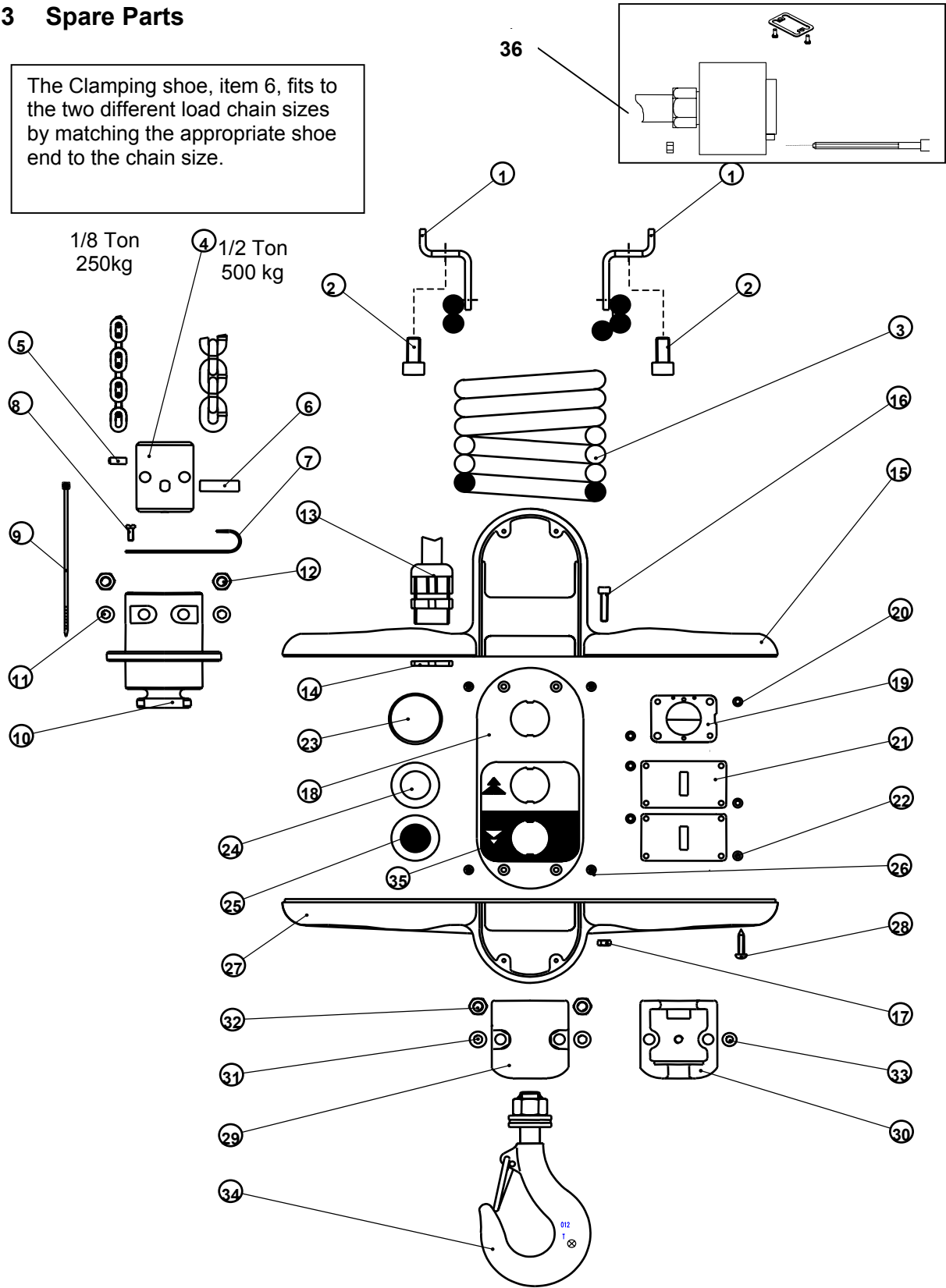
2.1 Electrical Diagram of the Pendant





3 Spare Parts

The Clamping shoe, item 6, fits to the two different load chain sizes by matching the appropriate shoe end to the chain size.





Item	Part Number	Description	Qty	Specification
1	----	Upper cable fastener	2	
2	----	Thread rolling screw M8x12	2	
3	833498	Coiled electric cable with plug	1	
--	7285035	Electrical plug (not shown)	1	
4	----	Clamping shoe	2	
5	----	Parallel pin 4x12	1	
6	----	Support pin	1	
7	----	Lower cable fastener	1	
8	----	Screw TC M3x8 ZN DIN84	3	
9	----	Strap 2.3x99 PLT1mm	1	
10	----	Sleeve	1	
11	----	Screw CHC M6x45 ZN DIN912	2	
12	----	Nut M6 DIN985	2	
13	52302277	Black gland ISO M20	1	
14	52302285	Nut DIN 936	1	
15	----	Upper pendant enclosure	1	
16	----	Screw CHC M4x20 DIN 912	4	
17	----	Nut HM4 DIN934	4	
18	----	Pendant box module	1	
19	833572	Emergency Stop Contact XAC-S 414	1	
20	----	Screw M2.9x9.5 DIN7981	2	
21	2309417008	Contact XEN-G 1191	2	
22	----	Screw M2.9x13 DIN7981	4	
23	833765	Emergency Stop ZA2 BS44	1	
24	2309417044	White button XAC A9411	1	
25	2309417044	Black button XAC A9412	1	
26	----	Screw M2.9x19 DIN 7981	4	
27	----	Lower pendant enclosure	1	
28	----	Screw M3.5x16 DIN7981	12	
29	----	Hook shoe	1	
30	----	Drilled hook shoe	1	
31	----	Screw CHC M6x20 DIN912	2	
32	----	Nut M6 DIN985	2	
33	8010512	Screw CHC M5x12 DIN912	1	
34	2212011	Hook 0T5 1br.	1	
35	52300975	Sticker up/down	1	
36	7285035	Electrical plug	1	
-	52304342	Complete DigiChain unit	1	
-	2211050	Fall stop assembly LM05 (not shown)	1	
-	52264313	Fall stop assembly LM1 (not shown)	1	