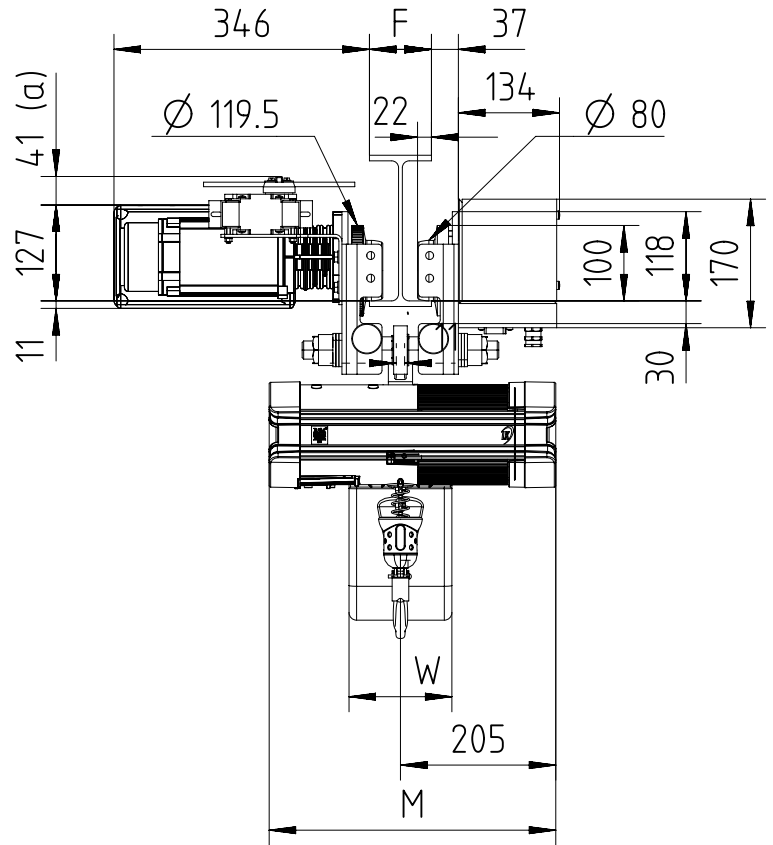
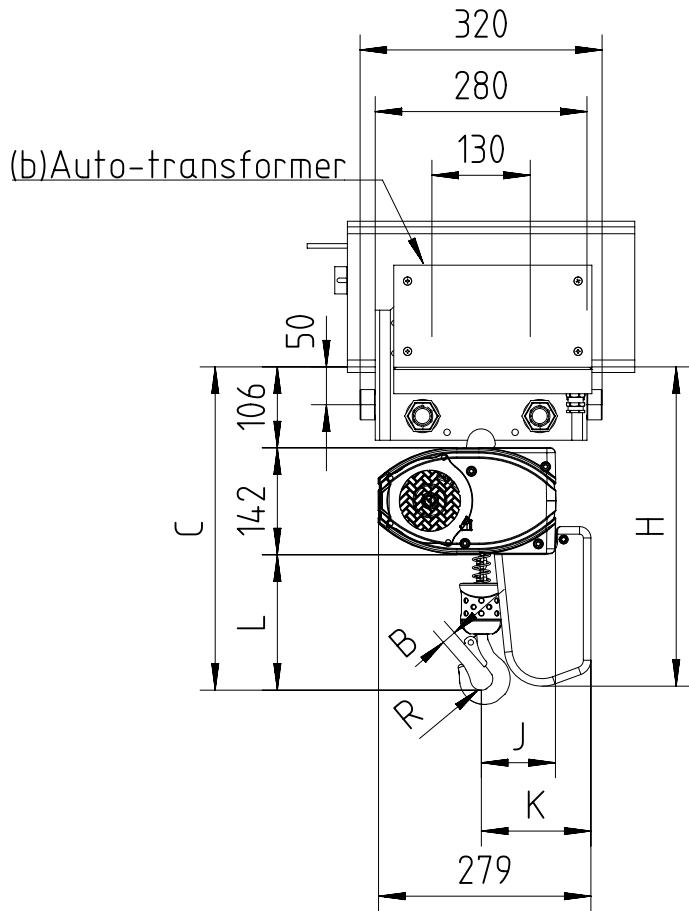


Fixed to electric travel trolley C2 max 320 kg (perpendicular version)


 $64 < F < 310$

(a) Note: Trolley limit switch is optional.
 (b) If the voltage is less than 380V or more than 480V, the trolley motor needs an autotransformer as drawn.
 Note: Mini. radius of curve for C2 trolley is 2m.

Chain Size (mm)	Max load (kg)	Falls	Chain bag capacity (m)	Dimensions (mm)										Weight of chain (kg/m)	Estimated weight of hoist incl. trolley w/o chain (kg)		
				B	C	L	R	J	K	H	W	M			LK	GLS	DB
												LK	DB/GLS				
4X11	320	1	6	19	427	179	15	99	145	422	136	379	496	0.37	72	78	74
			16							522							
			35							672							

GLS: Gear Limit Switch
 DB : Double Brake