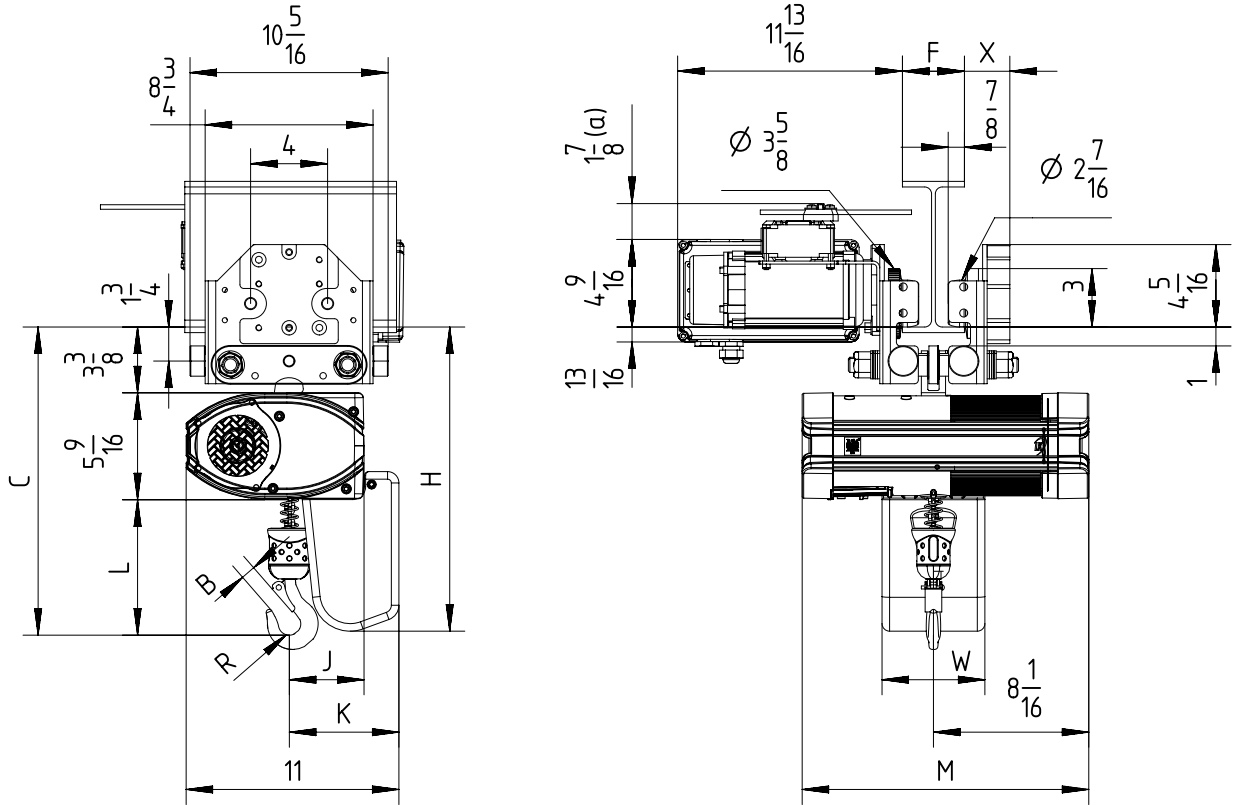


Fixed to electric travel trolley C1 max 0.25 TON (perpendicular version)



BEAM WIDTH	A
$2\frac{3}{16} < F < 2\frac{7}{16}$	$2\frac{5}{16}$
$2\frac{1}{2} < F < 12\frac{3}{16}$	$1\frac{1}{8}$

(a) Note: Trolley limit switch is optional.

 Note: Add 6.6lb for the trolley counter weight with the beam width range  $2\frac{1}{8}$  -  $2\frac{1}{2}$  inch.

Note: Mini. radius of curve for C1 trolley is 6.56ft.

Chain Size (mm)	Max load (TON)	Falls	Chain bag capacity (ft)	Dimensions (inch)										Weight of chain (lb/ft)	Estimated weight of hoist incl. trolley w/o chain (lb)		
				B	C	L	R	J	K	H	W	M			LK	GLS	DB
												LK	DB/GLS				
4X11	$\frac{1}{4}$	1	19	$\frac{3}{4}$	16	7	$\frac{5}{8}$	$3\frac{7}{8}$	$5\frac{3}{4}$	$15\frac{7}{8}$	$5\frac{3}{8}$	$14\frac{7}{8}$	$19\frac{1}{2}$	0.25	95	108	99
			52							$19\frac{3}{4}$							
			114							$25\frac{5}{8}$							

 GLS: Gear Limit Switch  
 DB: Double Brake