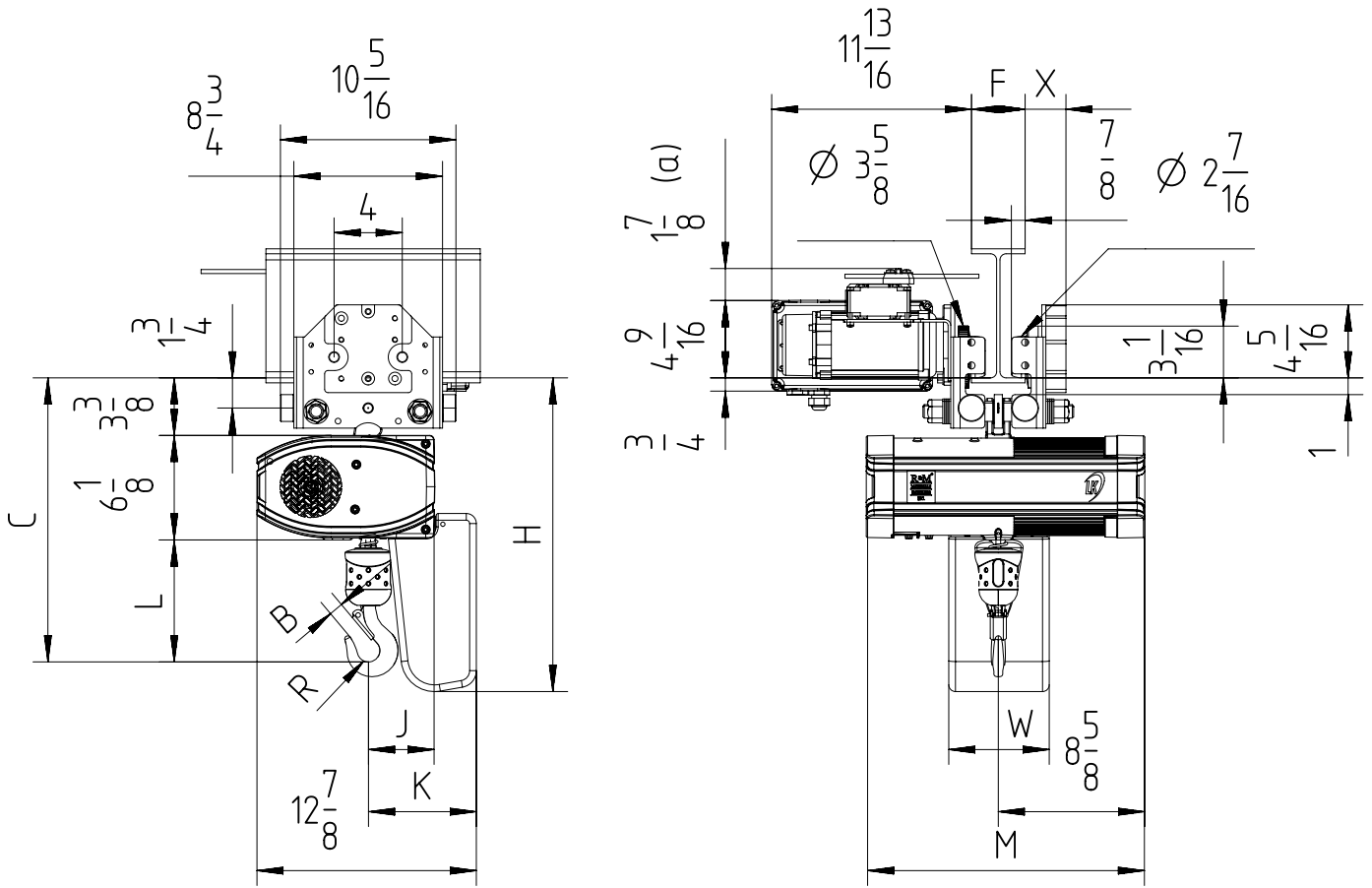


Fixed to electric travel trolley C1 max 0.5 TON (perpendicular version)



BEAM WIDTH	X
$2\frac{1}{8} < F < 2\frac{1}{2}$	$2\frac{3}{8}$
$2\frac{1}{2} < F < 12\frac{1}{4}$	$1\frac{1}{8}$

(a) Note: Trolley limit switch is optional.
 Note: Add 6.6 lb for the trolley counter weight with the beam width range $2\frac{1}{8}$ - $2\frac{1}{2}$ inch.
 Note: Mini. radius of curve for C1 trolley is 6.56ft.

Chain Size (mm)	Max load (TON)	Falls	Chain bag capacity (ft)	Dimensions (inch)										Weight of chain (lb/ft)	Estimated weight of hoist incl. trolley w/o chain (lb)			
				B	C	L	R	J	K	H	W	M			LK	LK Inverter	GLS	DB
												LK	Inverter/DB/GLS					
5X14	$\frac{1}{2}$	1	19	$\frac{7}{8}$	$16\frac{3}{4}$	$7\frac{1}{8}$	$\frac{5}{8}$	4	$6\frac{3}{8}$	$18\frac{3}{8}$	$5\frac{7}{8}$	$16\frac{3}{8}$	$21\frac{5}{8}$	0.38	110	130	119	123
			52							21								
			82							$25\frac{7}{8}$								

GLS: Gear Limit Switch
 DB : Double Brake