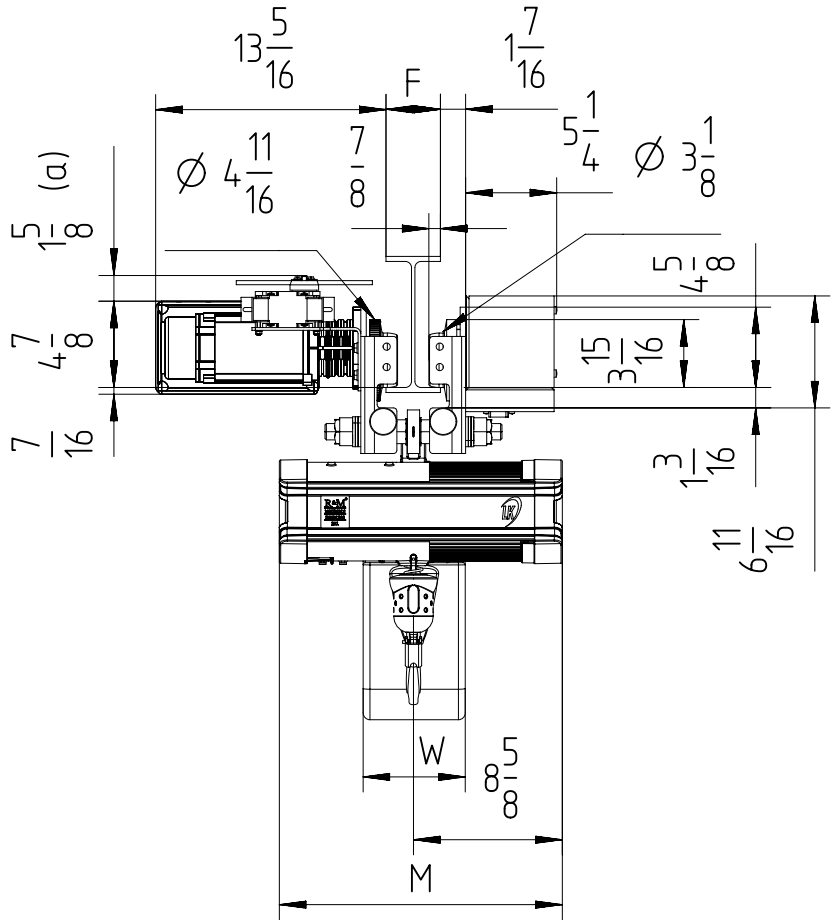
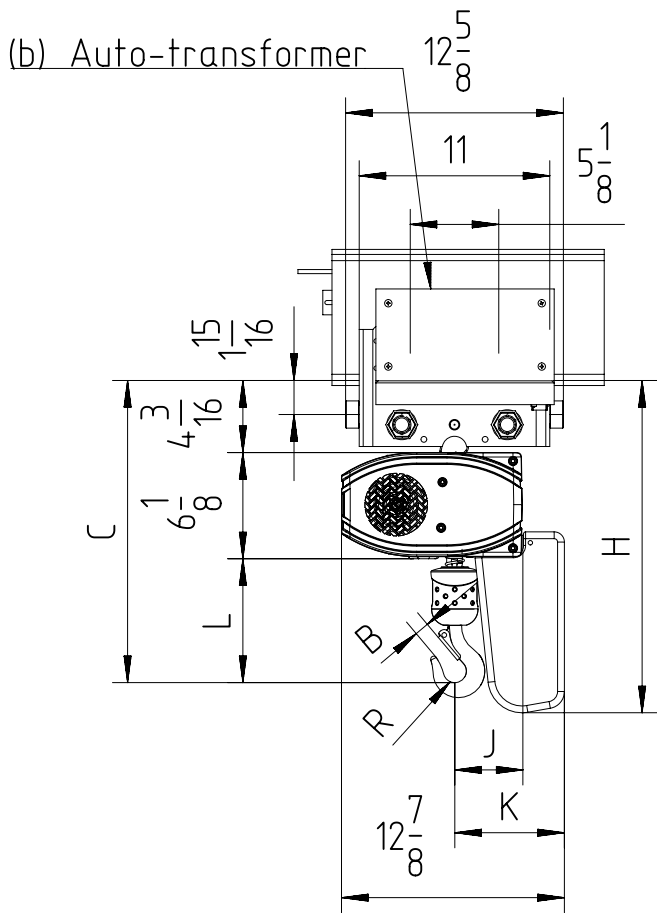


Fixed to electric travel trolley C2 max 0.5 TON (perpendicular version)



$$2\frac{1}{2} < F < 12\frac{1}{4}$$

(a) Note: Trolley limit switch is optional.
 (b) If the voltage is less than 380V or more than 480V, the trolley motor needs an autotransformer as drawn.
 Note: Mini. radius of curve for C2 trolley is 6.56ft.

Chain Size (mm)	Max load (TON)	Falls	Chain bag capacity (ft)	Dimensions (inch)										Weight of chain (lb/ft)	Estimated weight of hoist incl. trolley w/o chain (lb)			
				B	C	L	R	J	K	H	W	M			LK	LK Inverter	GLS	DB
												LK	Inverter/DB/GLS					
5X14	1/2	1	19	7 7/8	17 1/2	7 1/8	5 5/8	4	6 6/8	19 1/4	5 7/8	16	21 1/4	0.38	174	194	183	187
			52							21								
			82							26 1/2								

GLS: Gear Limit Switch
 DB: Double Brake