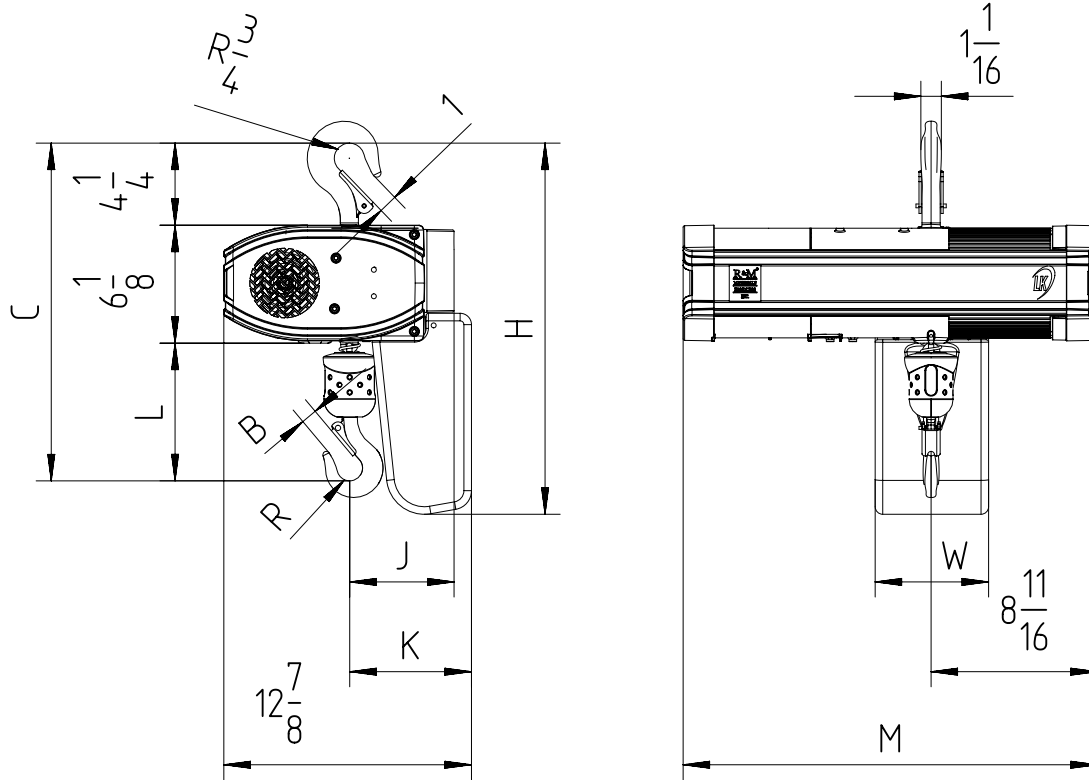


Hook suspended (perpendicular version)



Note: In case of 2-fall hoist, hook suspension is rotated by 180°.

Chain Size (mm)	Max load (TON)	Falls	Chain bag capacity (ft)	Dimensions (inch)										Weight of chain (lb/ft)	Estimated weight of hoist w/o chain (lb)
				B	C	L	R	J	K	H	W	M			
5X14	1/2	1	19	7/8	17 1/2	7 1/8	5/8	5 3/8	6 3/8	19 1/4	5 7/8	21 5/8	0.38	1ph	97
			52							21 3/4					
			82							26 1/2					
	1	2	19 (*)	1	19 7/8	9 5/8	7/8	4 7/8 (**)	7 1/4	19 1/4	5 7/8	21 5/8	0.38	1ph	82
			52 (*)							21 3/4					
			82 (*)							26 1/2					

 (*) In case of 2-fall hoist, available lifting height is half of the chain bag maximum capacity
 (**) In case of 2-fall hoist, Counter weight is not needed