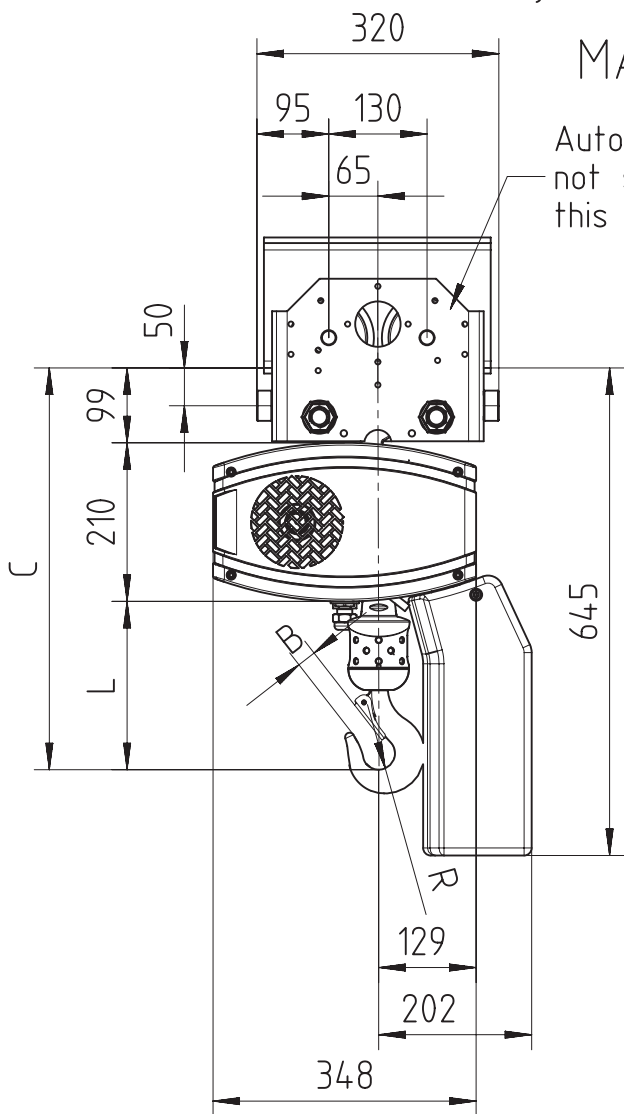


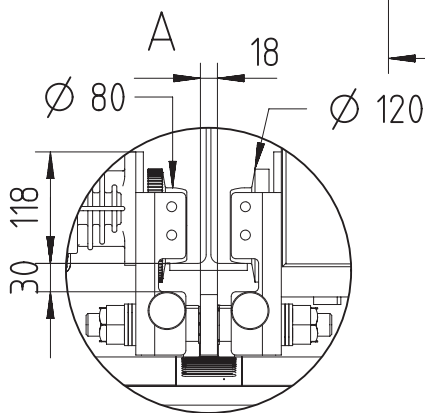
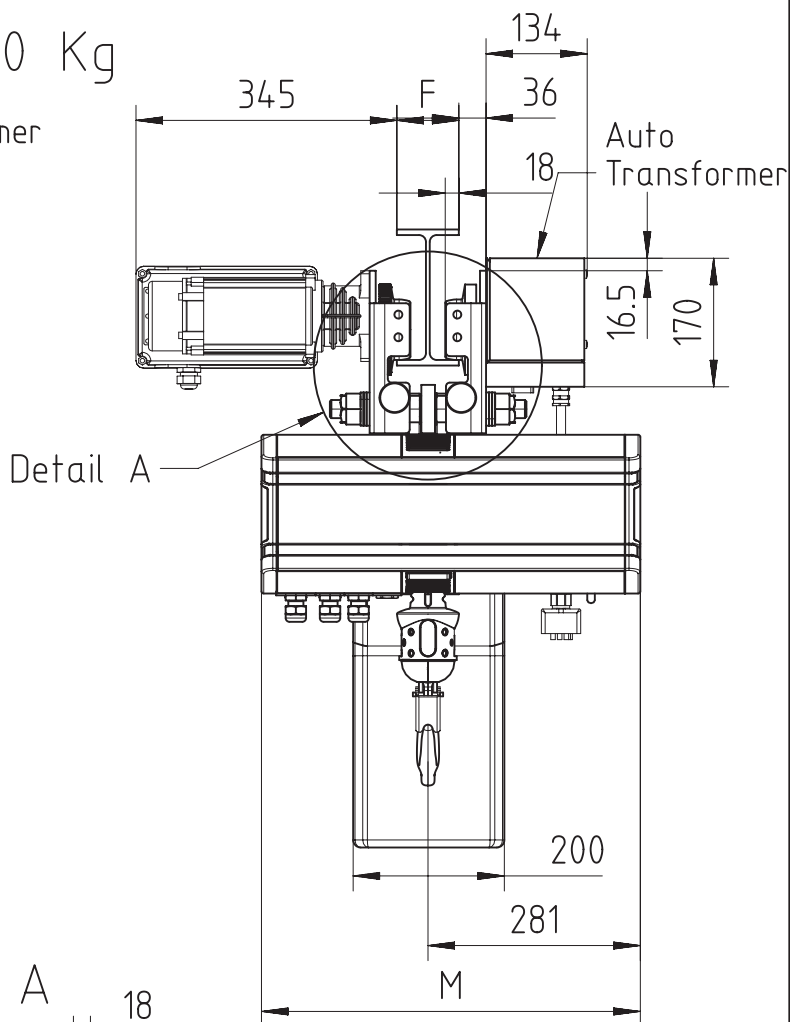


Fixed to inverter travel trolley TMU2 - 1 Fall (perpendicular version)

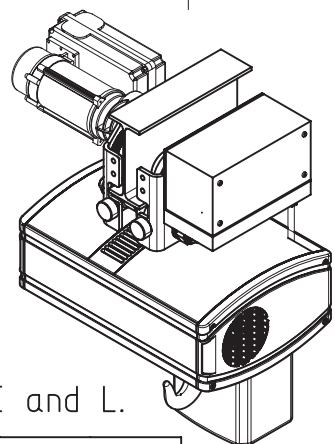


MAX 1000 Kg

Auto Transformer not shown in this view.



55 < F < 310



Note: For hoisting speed 16 m/min and higher, add 63 mm to dimension C and L.

Chain Size	Max load kg	Chain bag capacity m	Dimensions in mm				Weight per meter of chain Kg/m	Estimated unit weight wo chain Kg			
			B	C	L	R		LK	LK Inverter	GLS	DB
7X20	1000	10	28	532	223	21	1.10	84.3	89.8	88.7	87.0
Dimension M in mm								501	615	590	531

GLS: Gear Limit Switch  
DB : Double Brake