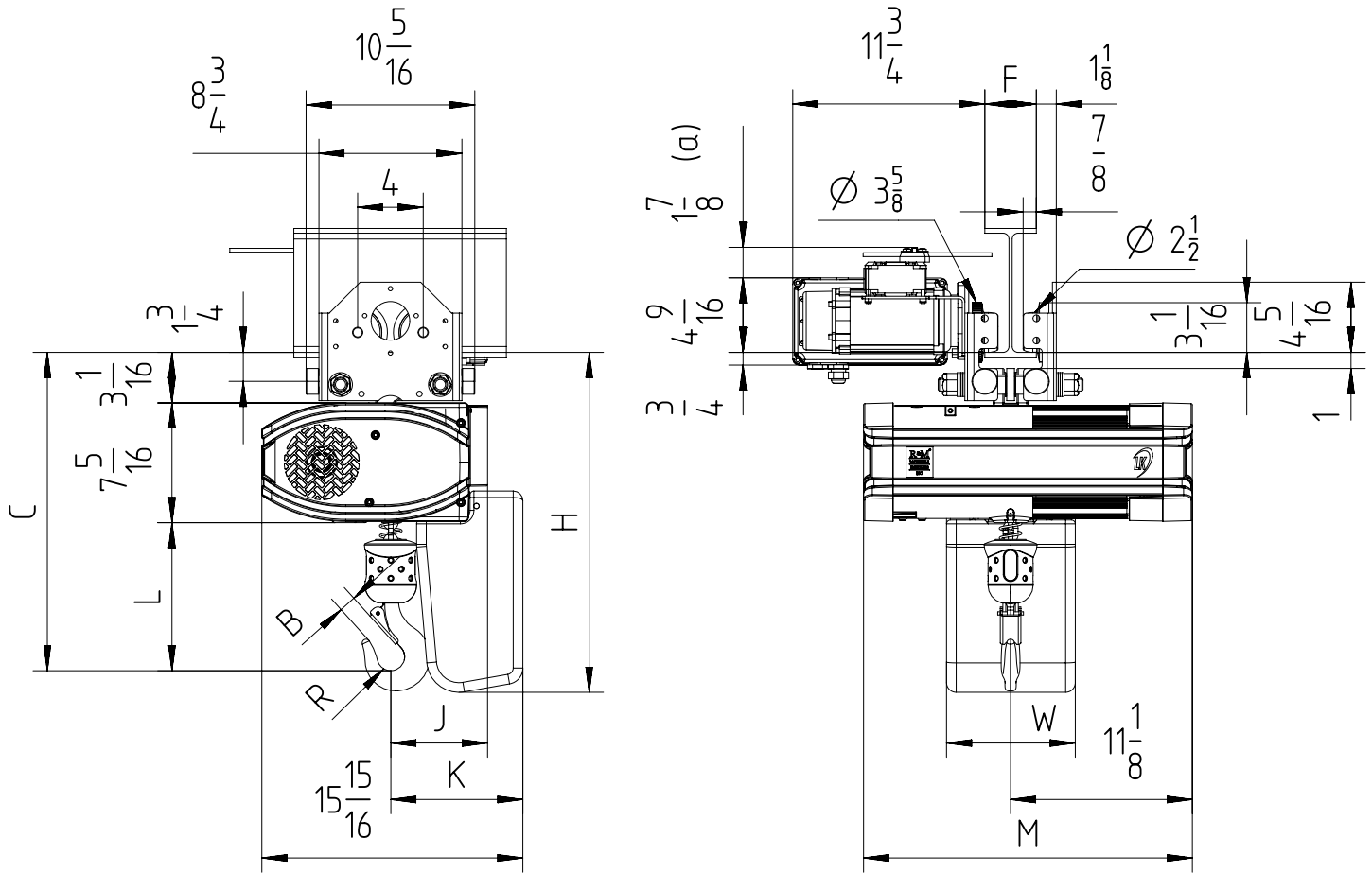


Fixed to electric travel trolley C1 max 1 TON (perpendicular version)



$$2\frac{3}{16} < F < 12\frac{3}{16}$$

(a) Note: Trolley limit switch is optional.
 Note: In case of 2-fall hoist, coupling suspension is rotated by 180°.
 Note: Mini. radius of curve for trolley 1 TON is 6.56ft.

Chain Size (mm)	Max load (TON)	Falls	Chain bag capacity (ft)	Dimensions (inch)										Weight of chain (lb/ft)	Estimated weight of hoist incl. trolley w/o chain (lb)			
				B	C	L	R	J	K	H	W	M			LK	LK Inverter	GLS	DB
												LK	LK Inverter/DB/GLS					
7X20	1	1	19	1	19½	9	7/8	5 7/8	8 1/8	20 3/4	7 7/8	20 1/8	25 1/4	0.75	165	185	170	185
			52							26 3/8								
			98							29 1/8								
	1	2	19 (*)	1 1/4	22 1/4	11 3/4	1	6 (**)	9 1/4	20 3/4	7 7/8	20 1/8	25 1/4	0.75	154	174	159	174
			52 (*)							26 3/8								
			98 (*)							29 1/8								

 GLS: Gear Limit Switch
 DB : Double Brake

 (*) In case of 2-fall hoist, available lifting height is half of the chain bag maximum capacity
 (**) In case of 2-falls, Counter weight is not needed.