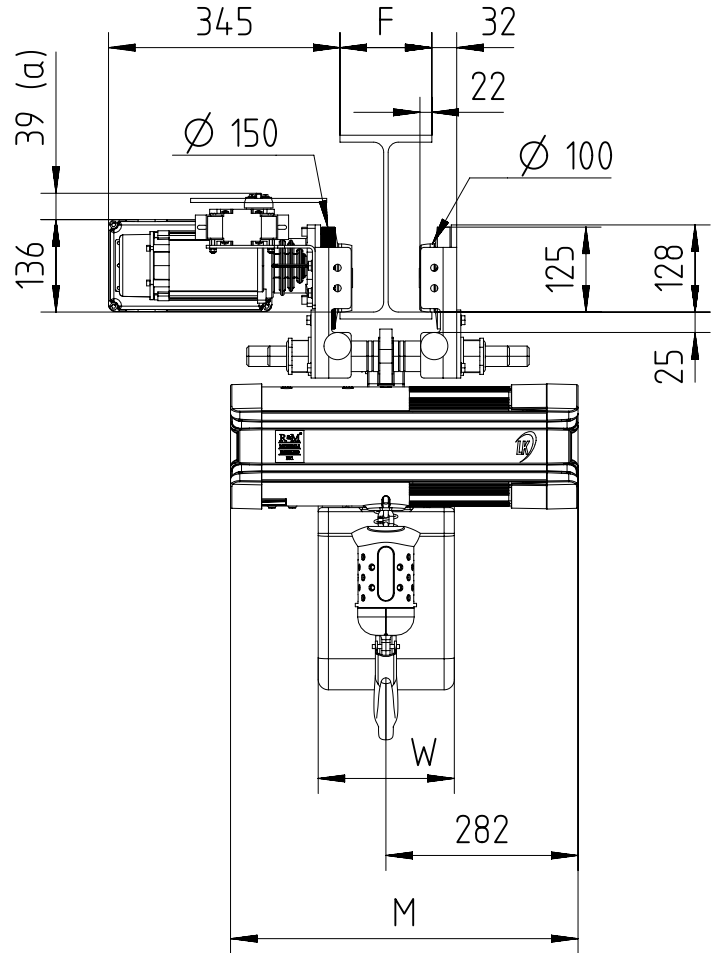
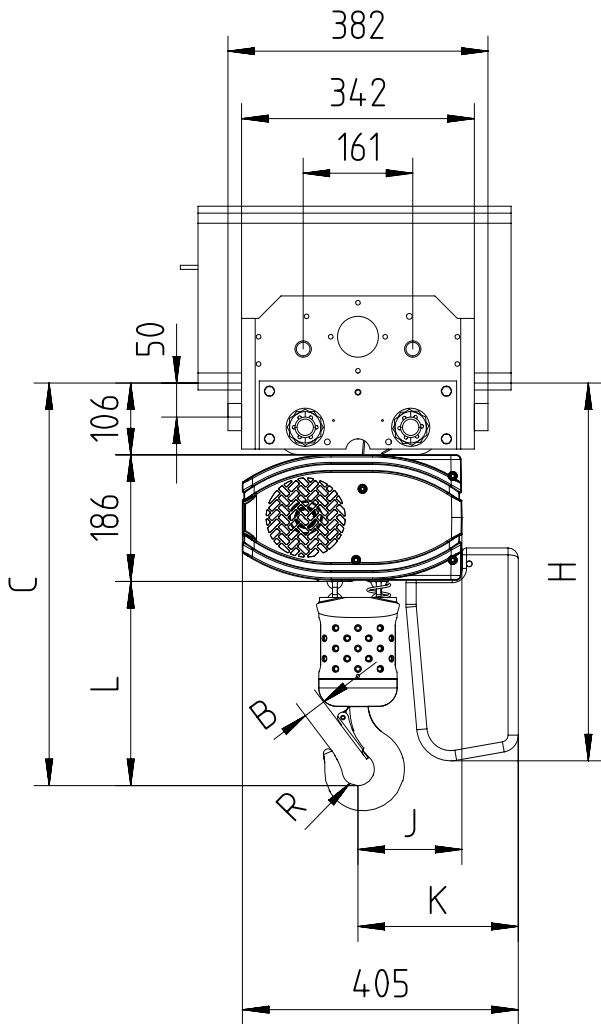


Fixed to electric travel trolley C3 max 2500kg (perpendicular version)


 $82 < F < 310$

(a) Note: Trolley limit switch is optional.

Note: Mini. radius of curve for trolley 2500 kg is 2m.

| Chain Size (mm) | Max load (kg) | Falls | Chain bag capacity (m) | Dimensions (mm) | | | | | | | | | | Weight of chain (kg/m) | Estimated weight of hoist incl. trolley w/o chain (kg) | | | |
|-----------------|---------------|-------|------------------------|-----------------|-----|-----|----|-----|-----|-----|-----|-----|--------------------|------------------------|--|-------------|-----|-----|
| | | | | B | C | L | R | J | K | H | W | M | | | LK | LK Inverter | GLS | DB |
| | | | | | | | | | | | | LK | LK Inverter/DB/GLS | | | | | |
| 7X20 | 2500 | 2 | 6 (*) | 33 | 592 | 300 | 24 | 154 | 236 | 555 | 200 | 510 | 641 | 1.1 | 105 | 114 | 107 | 114 |
| | | | 16 (*) | | | | | | | 696 | | | | | | | | |
| | | | 30 (*) | | | | | | | 766 | | | | | | | | |

 GLS: Gear Limit Switch
 DB: Double Brake

(*) In case of 2-fall hoist, available lifting height is half of the chain bag maximum capacity