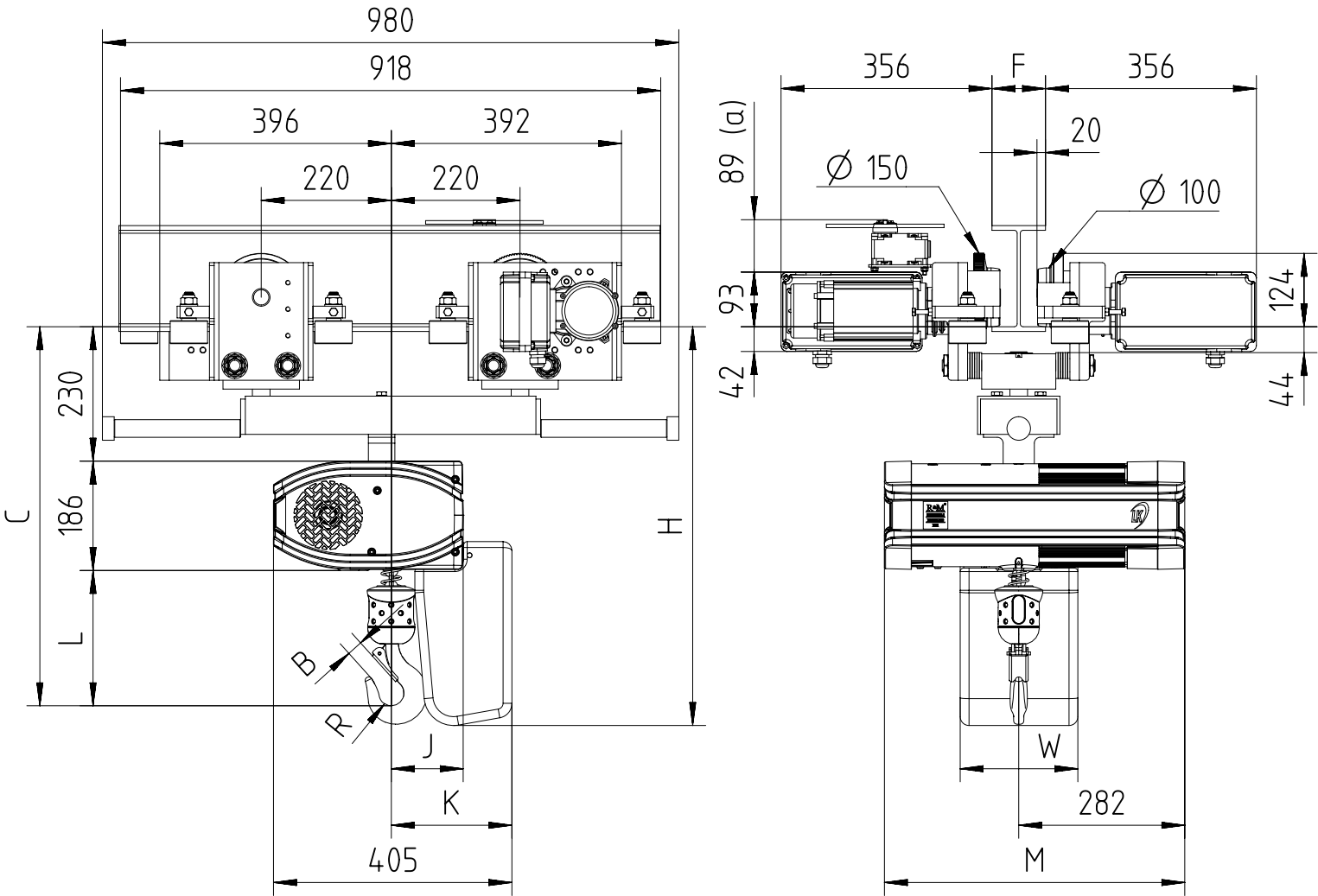


With electric travel swivelling trolley max 2500kg (perpendicular version)


 $100 < F < 310$

 (a) Note: Trolley limit switch is optional.
 Note: Mini. radius of curve for trolley 2500 kg is 0.8m.

Chain Size (mm)	Max load (kg)	Falls	Chain bag capacity (m)	Dimensions (mm)										Weight of chain (kg/m)	Estimated weight of hoist incl. trolley w/o chain (kg)			
				B	C	L	R	J	K	H	W	M			LK	LK Inverter	GLS	DB
												LK	LK Inverter/DB/GLS					
7X20	1250	1	6	27	646	230	21	122	205	678	200	510	641	1.1	138	147	140	147
			16							819								
			30							889								
	2500	2	6 (*)	33	716	300	24	154	236	678	200	510	641	1.1	142	151	144	151
			16 (*)							819								
			30 (*)							889								

 GLS: Gear Limit Switch
 DB : Double Brake

(*) In case of 2-fall hoist, available lifting height is half of the chain bag maximum capacity