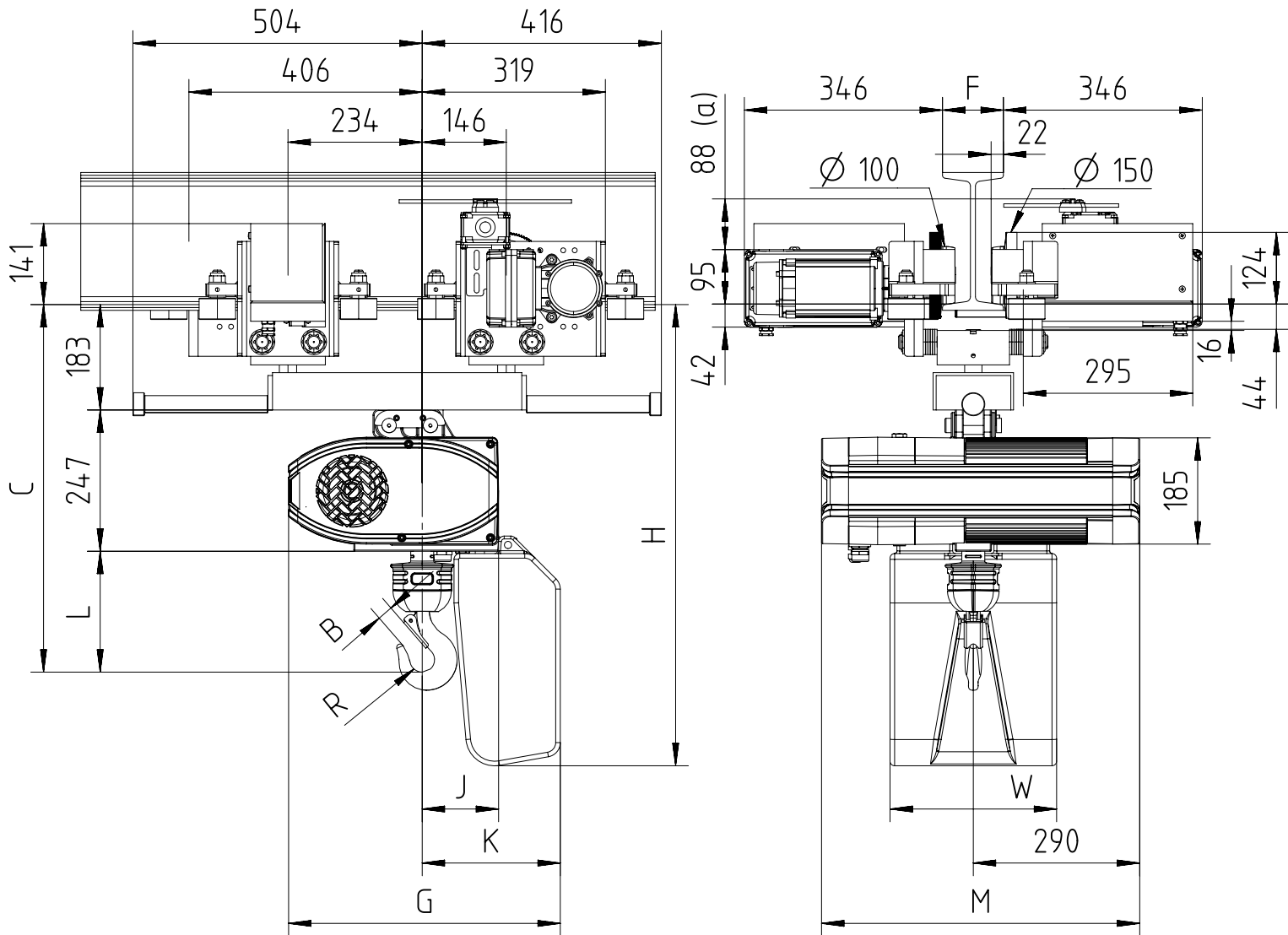


With electric swivelling trolley max 3200 Kg (perpendicular version)



$$100 < F < 310$$

(a) Note: Trolley limit switch is optional.
 Note: Mini. radius of curve for trolley 3200 Kg is 0.8m.
 Note: Add 60mm to C & L dimension for hoisting speeds greater than 8 m/min.

Chain Size (mm)	Max load (Kg)	Falls	Chain bag capacity (m)	Dimensions (mm)										Weight of chain (kg/m)		Estimated weight of hoist incl. trolley w/o chain (Kg)		
				B	C	L	R	J	K	G	H	W	M		LK	GLS	DB	
													LK/	GLS				DB
9x27	1600	1	12	26	640	210	22	133	240	473	803	290	554	668	1.8	207	212	213
			50 (*)						422	655	1017	300						
			80 (*)						494	727	1219	300						
	3200	2	12 (**)	35	787	357	25	175	282	473	803	290	554	668	1.8	210	215	216
			50 (*,**)						464	655	1017	300						
			80 (*,**)						536	727	1219	300						

GLS: Gear Limit Switch
 DB : Double Brake

(*) For these heights of lift, customer has to link the chain bag to the structure.
 (**) In case of 2-fall hoist, available lifting height is half of the chain bag maximum capacity.