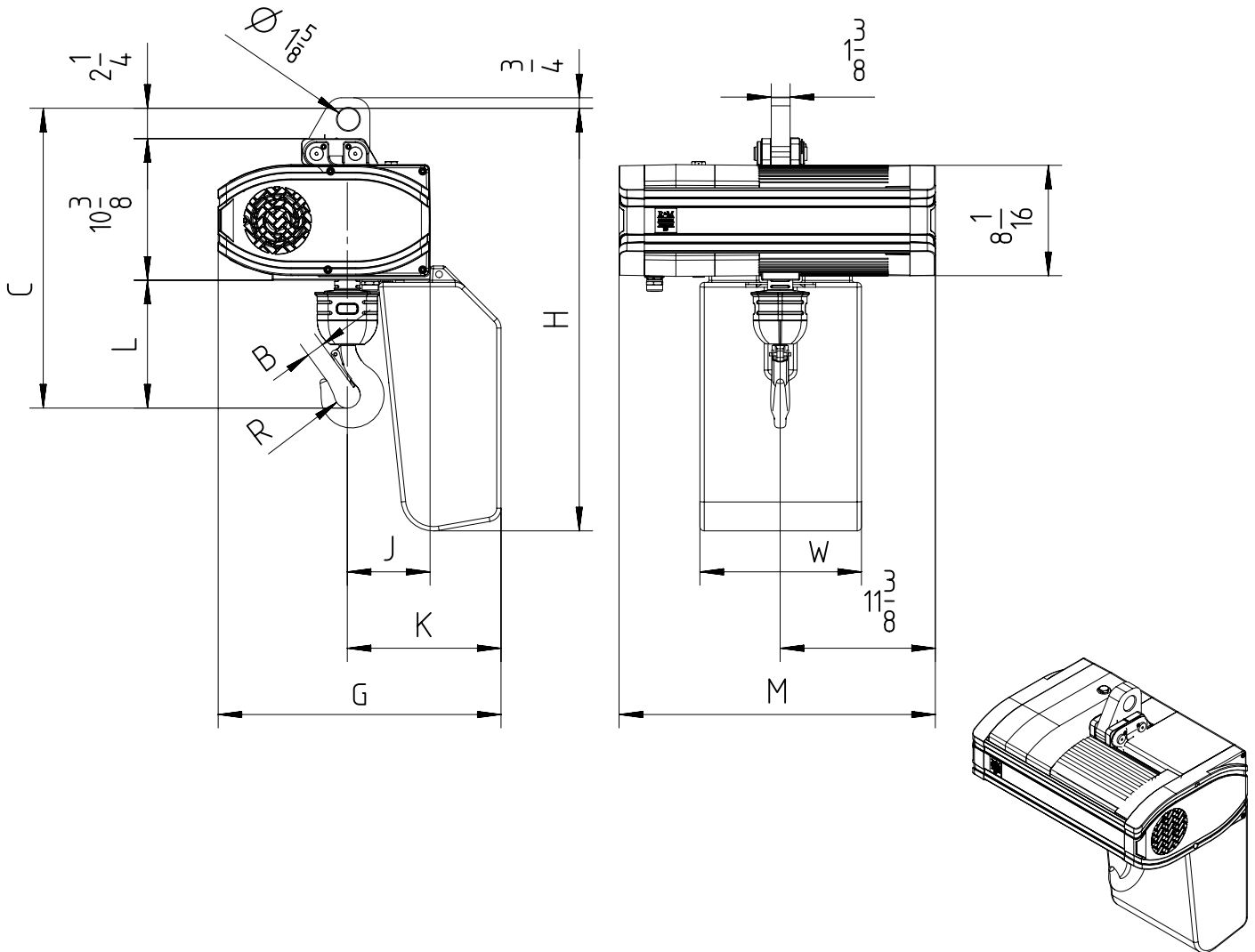


Eye suspended (perpendicular version)



Note: In case of 2-fall hoist, suspension eye is rotated by 180°.
 Note: Add $2\frac{3}{8}$ inch to C & L dimension for hoisting speeds greater than 32 fpm.

Chain Size (mm)	Max load (TON)	Falls	Chain bag capacity (ft)	Dimensions (inch)										Weight of chain (lb/ft)	Estimated weight of hoist w/o chain (lb)			
				B	C	L	R	J	K	G	H	W	M		LK	GLS	DB	
													LK/GLS					DB
11.3x31	2 $\frac{1}{2}$	1	39	1 $\frac{5}{16}$	22	9 $\frac{3}{8}$	1 $\frac{5}{16}$	6 $\frac{1}{16}$	11 $\frac{1}{4}$	20 $\frac{11}{16}$	30 $\frac{15}{16}$	11 $\frac{13}{16}$	23 $\frac{1}{8}$	27 $\frac{15}{16}$	1.9	238	249	251
			164 (*)						17 $\frac{7}{16}$	26 $\frac{7}{8}$	35 $\frac{11}{16}$							
			262 (*)						20 $\frac{1}{4}$	29 $\frac{11}{16}$	43 $\frac{9}{16}$							
	5	2	39 (**)	1 $\frac{5}{8}$	27 $\frac{7}{8}$	15 $\frac{1}{4}$	1 $\frac{1}{8}$	8	13 $\frac{1}{8}$	20 $\frac{11}{16}$	30 $\frac{15}{16}$	11 $\frac{13}{16}$	23 $\frac{1}{8}$	27 $\frac{15}{16}$	1.9	247	258	260
			164 (*, **)						19 $\frac{5}{16}$	26 $\frac{7}{8}$	35 $\frac{11}{16}$							
			262 (*, **)						22 $\frac{3}{16}$	29 $\frac{11}{16}$	43 $\frac{9}{16}$							

GLS: Gear Limit Switch
 DB : Double Brake

(*) For these heights of lift, customer has to link the chain bag to the structure.
 (**) In case of 2-fall hoist, available lifting height is half of the chain bag maximum capacity.