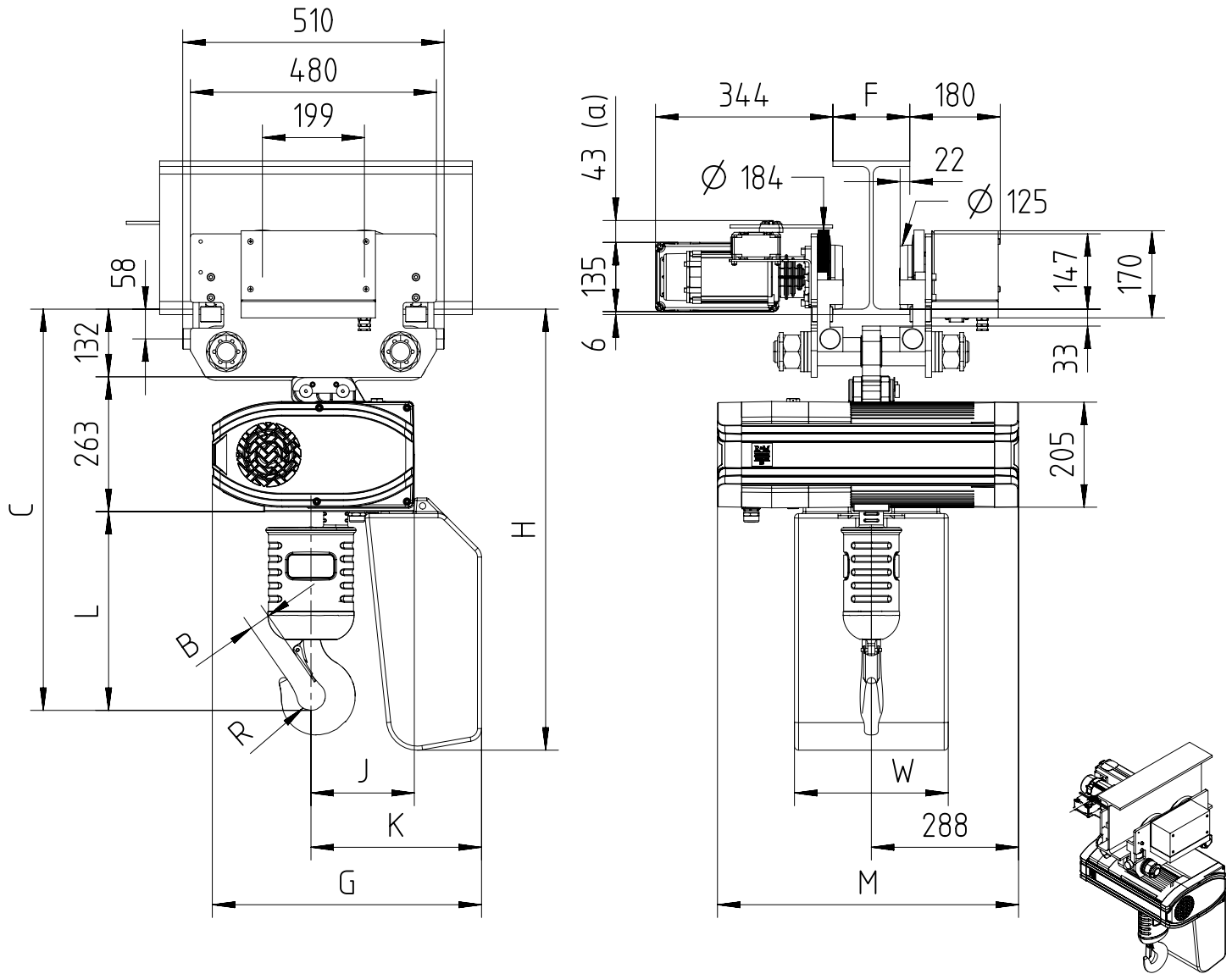


Fixed to electric travel trolley TMU-C5 max 5000 Kg (perpendicular version)


 $82 < F < 310$

(a) Note: Trolley limit switch is optional.
 Note: Add 60mm to C & L dimension for hoisting speeds greater than 8 m/min.

Chain Size (mm)	Max load (Kg)	Falls	Chain bag capacity (m)	Dimensions (mm)											Weight of chain (kg/m)	Estimated weight of hoist incl. trolley w/o chain (Kg)		
				B	C	L	R	J	K	G	H	W	M			LK	GLS	DB
													LK/	GLS				
11.3X31	5000	2	12 (**)	41	783	388	28	203	334	525	861	300	587	709	2.8	184	189	190

GLS: Gear Limit Switch
 DB: Double Brake

(**) In case of 2-fall hoist, available lifting height is half of the chain bag maximum capacity.