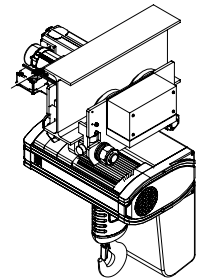
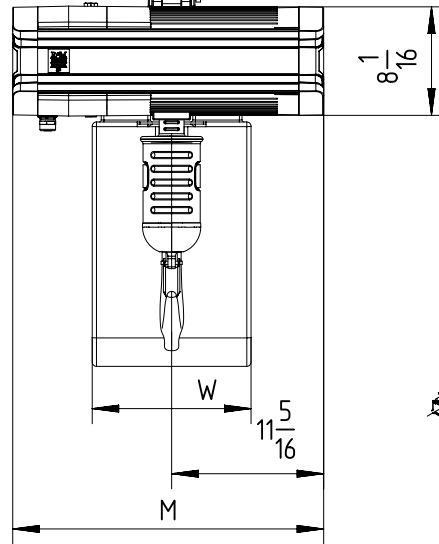
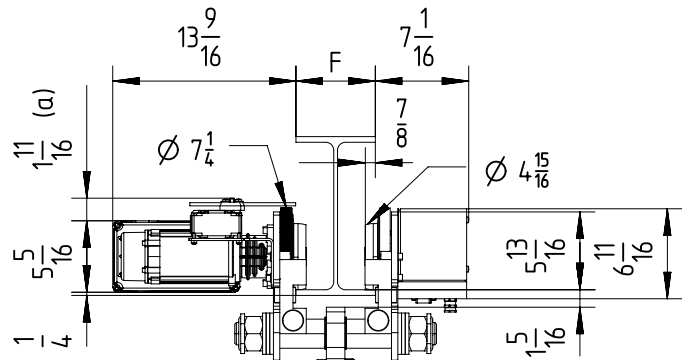
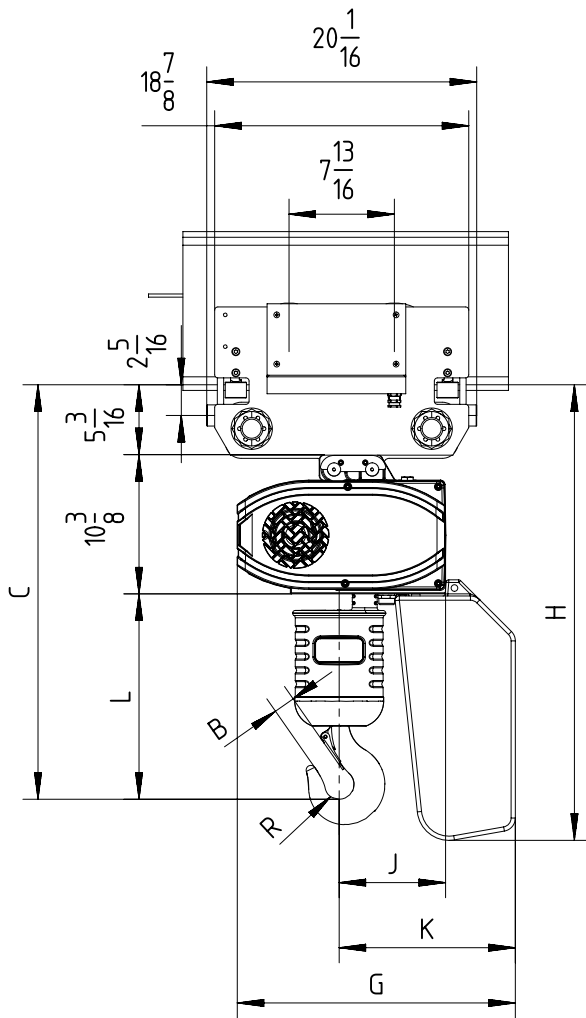


Fixed to electric travel trolley TMU-C5 max 5 TON (perpendicular version)



$$3\frac{1}{4} < F < 12\frac{3}{16}$$

(a) Note: Trolley limit switch is optional.

 Note: Add $2\frac{3}{8}$ inch to C & L dimension for hoisting speeds greater than 32 fpm.

Chain Size (mm)	Max load (TON)	Falls	Chain bag capacity (ft)	Dimensions (inch)											Weight of chain (lb/ft)	Estimated weight of hoist incl. trolley w/o chain (lb)		
				B	C	L	R	J	K	G	H	W	M			LK	GLS	DB
														LK/GLS	DB			
11.3x31	5	2	39 (**)	1 $\frac{5}{8}$	30 $\frac{13}{16}$	15 $\frac{1}{4}$	1 $\frac{1}{8}$	8	13 $\frac{1}{8}$	20 $\frac{11}{16}$	33 $\frac{7}{8}$	11 $\frac{13}{16}$	23 $\frac{1}{8}$	27 $\frac{15}{16}$	1.9	406	417	419

 GLS: Gear Limit Switch
 DB: Double Brake

(***) In case of 2-fall hoist, available lifting height is half of the chain bag maximum capacity.

R&M reserves the right to alter or amend the above information without notice.

DISCLOSED WITHOUT PRIOR WRITTEN CONSENT OF THE COMPANY. ANY COPIES OF THIS DOCUMENT MADE BY ANY METHOD MUST ALSO INCLUDE A COPY OF THIS LEGEND.

 53194322
 53194322-PDF2
 20/07/2016