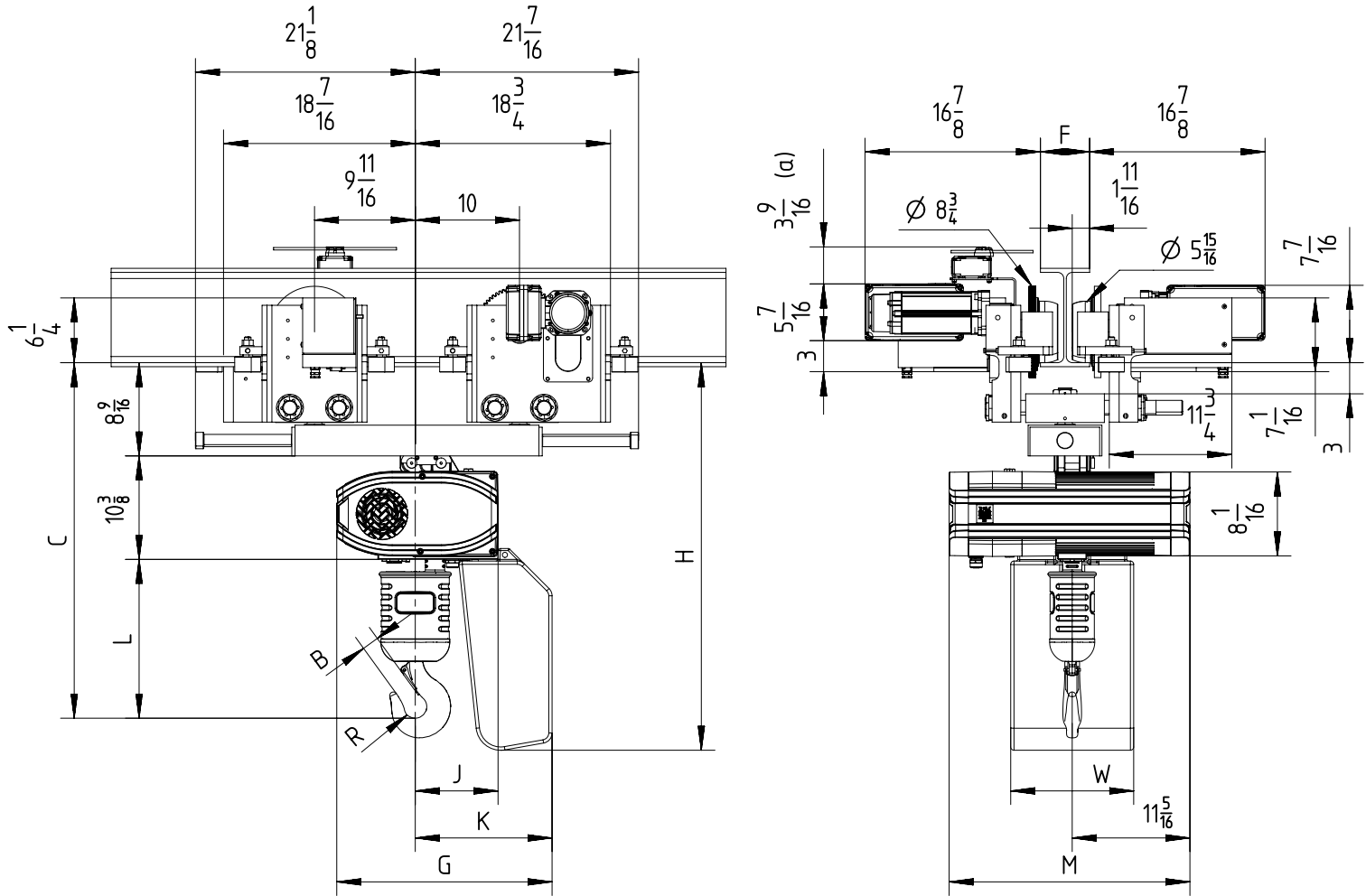


With electric travel swivelling trolley max 5 TON (perpendicular version)



$$3\frac{15}{16} < F < 12\frac{3}{16}$$

(a) Note: Trolley limit switch is optional.
 Note: Mini. radius of curve for trolley 5 TON is 4.92ft.
 Note: Add 2 $\frac{3}{8}$ inch to C & L dimension for hoisting speeds greater than 32fpm.

Chain Size (mm)	Max load (TON)	Falls	Chain bag capacity (ft)	Dimensions (inch)											Weight of chain (lb/ft)	Estimated weight of hoist incl. trolley w/o chain (lb)		
				B	C	L	R	J	K	G	H	W	M			LK	GLS	DB
													LK/GLS	DB				
11.3x31	5	2	39 (**)	1 $\frac{5}{16}$	34 $\frac{3}{16}$	15 $\frac{1}{4}$	1 $\frac{1}{8}$	8	13 $\frac{1}{8}$	20 $\frac{11}{16}$	37 $\frac{1}{4}$	11 $\frac{13}{16}$	23 $\frac{1}{8}$	27 $\frac{15}{16}$	1.9	507	518	520
			98 (*,**) (*)						19 $\frac{5}{16}$	26 $\frac{7}{8}$	42							
			164 (*,**) (*)						22 $\frac{3}{16}$	29 $\frac{11}{16}$	49 $\frac{15}{16}$							

GLS: Gear Limit Switch
 DB : Double Brake
 (*) For big height of lift, customer has to link the chain bag to the structure.
 (**) In case of 2-fall hoist, available lifting height is half of the chain bag maximum capacity.

R&M reserves the right to alter or amend the above information without notice.

DISCLOSED WITHOUT PRIOR WRITTEN CONSENT OF THE COMPANY . ANY COPIES OF THIS DOCUMENT MADE BY ANY METHOD MUST ALSO INCLUDE A COPY OF THIS LEGEND.