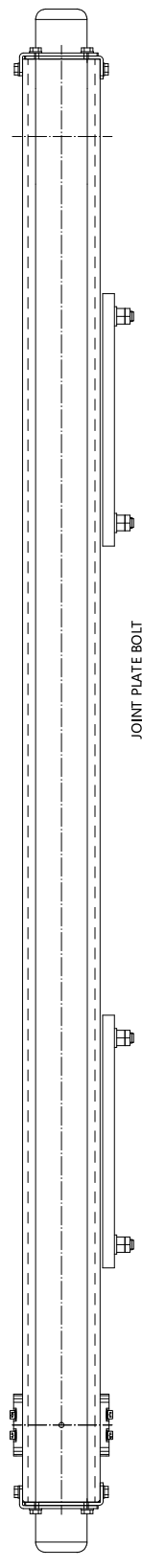


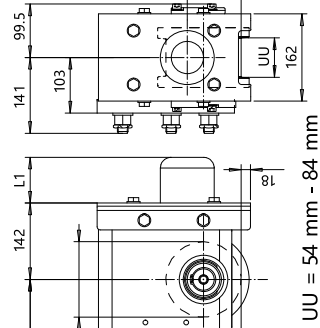
This document is the absolute property of RBM Materials Handling, Inc. This document must not be copied without the written permission of RBM Materials Handling, Inc. The contents herein must not be disclosed to a third party nor be used for any unauthorized purpose. Corrections will be pronounced.

# RSN14 END TRUCK SIDE JOINT PLATE TYPE EBN14-400



**JOINT PLATE BOLT  
TIGHTENING TORQUE**  
M16 Bolt - Torque to 300Nm  
M20 Bolt - Torque to 580 Nm

SS



Product Code example  
**RSN14-2574-400255C1000-N**

- N=standard, E=Special
- primer paint, color code
- Joint plate distance (pin to pin with double DG girders; driving wheel to pin with asymmetrical single SG girder)
- Buffer type
- Joint plate height (JPH)
- Joint plate length (pin to pin) (JPL)
- =1WD, D =2WD (Number of driving wheels/end carriage)
- Wheel groove =JU
- Wheel base =SS (type)
- =std, C =asymmetrical joint
- Type of end carriage

The wheel loads listed are only a guideline. The max. wheel load listed is based on the structural integrity of the frame and load placement, and it does not take into account permissible wheel loading or bearing life. SG load placement is at the center, and DG load placement is for a trolley gauge of 1400 mm (55 1/8").

The permissible dynamic wheel load listed is based on assumptions that the bridge speed is 40 m/min (130 fpm), end truck duty is Fem 2m, and the runway rail as listed.

The actual wheel load should not exceed the permissible wheel load. If the permissible dynamic wheel load is greater than the maximum dyn wheel load, then the actual wheel load cannot exceed maximum dyn wheel load.

Dyn wheel load = 1.15x Static wheel load

UU = 54 mm - 84 mm

Buffer type	L1 (mm)	Ø (mm)
A	53	63
B	68	80
C	85	100
D	105	125
K	80	80
G	100	100
E	150	100
F	190	125
M	125	125
H	160+100	160
P	240+100	160
A, B, C, D rubber		
K, G, E, M, F, H, P polyurethane		

Wheelbase code	SS (mm)	Max. dyn whl load, (kN)			Perm dyn whl load, (kN)			Approx. Wgt / Trk (kg)	
		SG	DG	ASCE 30	ASCE 40	ASCE 60	SG	DG	
16	1600	47	55	37.6	43	58	165	210	
20	2000	47	55	37.6	43	58	188	213	
25	2500	47	55	37.6	43	58	216	241	
32	3150	47	55	37.6	43	58	253	278	
35	3500	40	55	37.6	43	58	273	298	
40	4000	32	37	37.6	43	58	303	328	

Rev	Description	Specification	Std	Drawing
001	RTTVVPH	RTTVVPH		Drawing
002	2008-10-14	END TRUCK		Ref. Drawing
003	2008-10-14	OUTLINE DRAWING		
004	2008-10-14	RSN16-EBN		
005	2008-10-14	RSN14 END TRUCK		

RSN14 END TRUCK  
03/2011