

Dimensions are for reference in estimating only. Use of various modifications may affect overall dimensional outline. Where dimensions are critical, request certified drawings for construction. All dimensions are in millimeters unless otherwise noted.

**The maximum wheel loads listed are only a guideline. The maximum values are based on assumption that the crane speed is 40 m/min (130 fpm), end truck duty is Fem 2m and the runway rail width is 80 mm (3.15"). If these conditions change, use QuoteMaster to help select the end truck.

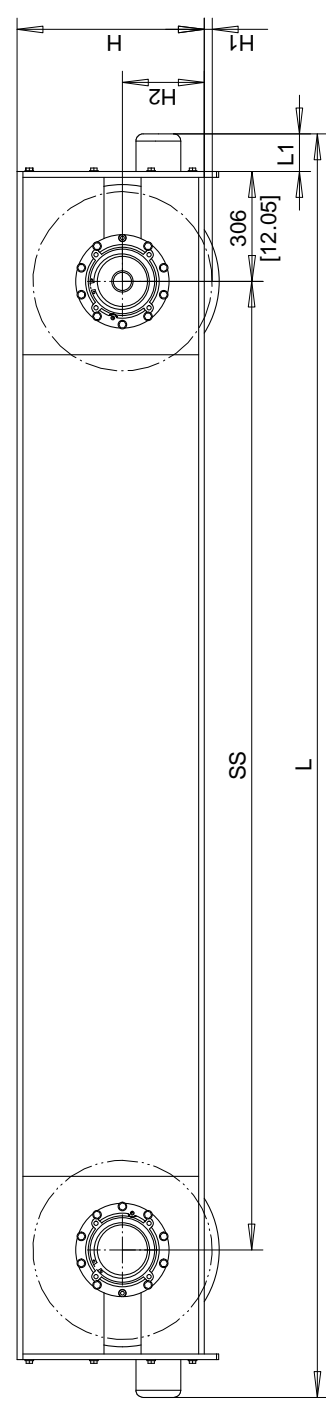
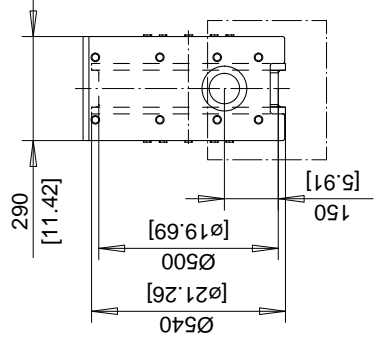
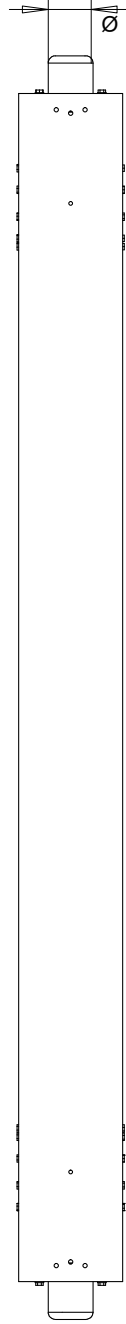
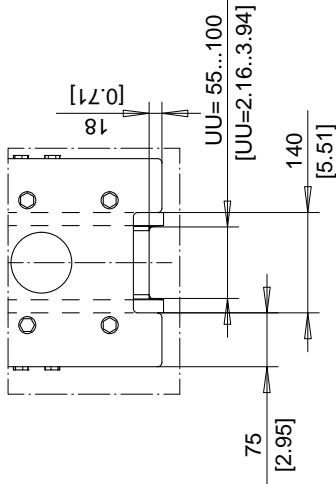
For joint plate details, refer to drawing:

TOP JOINT PLATE TYPE K

SIDE JOINT PLATE TYPE S

End truck shown without joint plate.

BUMPER DIMENSIONS	
TYPE	L1
	mm
B	68
C	85
D	105
E	150
F	190
H	160
I	200
M	125
P	240
S	300



2700 mm WHEELBASE END TRUCK SHOWN

COMPATIBLE WITH GES5 DRIVE

RT END TRUCK

SS mm [inch]	H mm [inch]	H1 mm [inch]	H2 mm [inch]	WEIGHT/TRK kg [lb]	MAX. DYN. WHL. LOAD KN[kip]**	
					SINGLE GIRDER	DOUBLE GIRDER
2200 [86.61]	514 [20.24]	26 [1.02]	224 [8.82]	790 [1742]	350 [78.75]	350 [78.75]
2700 [106.3]	522 [20.55]	22 [0.87]	228 [8.98]	900 [1984]	350 [78.75]	350 [78.75]
3100 [122.1]	522 [20.55]	22 [0.87]	228 [8.98]	960 [2116]	328 [73.80]	350 [78.75]
3800 [149.6]	530 [20.87]	18 [0.71]	232 [9.13]	1140 [2513]	314 [70.65]	350 [78.75]
4500 [177.2]	642 [25.28]	22 [0.87]	228 [8.98]	1320 [2910]	295 [66.37]	350 [78.75]
5000 [196.9]	650 [25.59]	18 [0.71]	232 [9.13]	1490 [3285]	304 [68.40]	350 [78.75]
5500 [216.5]	650 [25.59]	18 [0.71]	232 [9.13]	1590 [3505]	278 [62.55]	350 [78.75]

Design	Chd	Appd	P_OX_RT50 File
R&M / R&H	2002-08-08 Date		
Dept.			OX_RT50
R&M			R&M Materials Handling Inc.
MATERIALS HANDLING INC.			4501 Gateway Blvd, Springfield
			RT50 END TRUCK
			Issue 8/2002