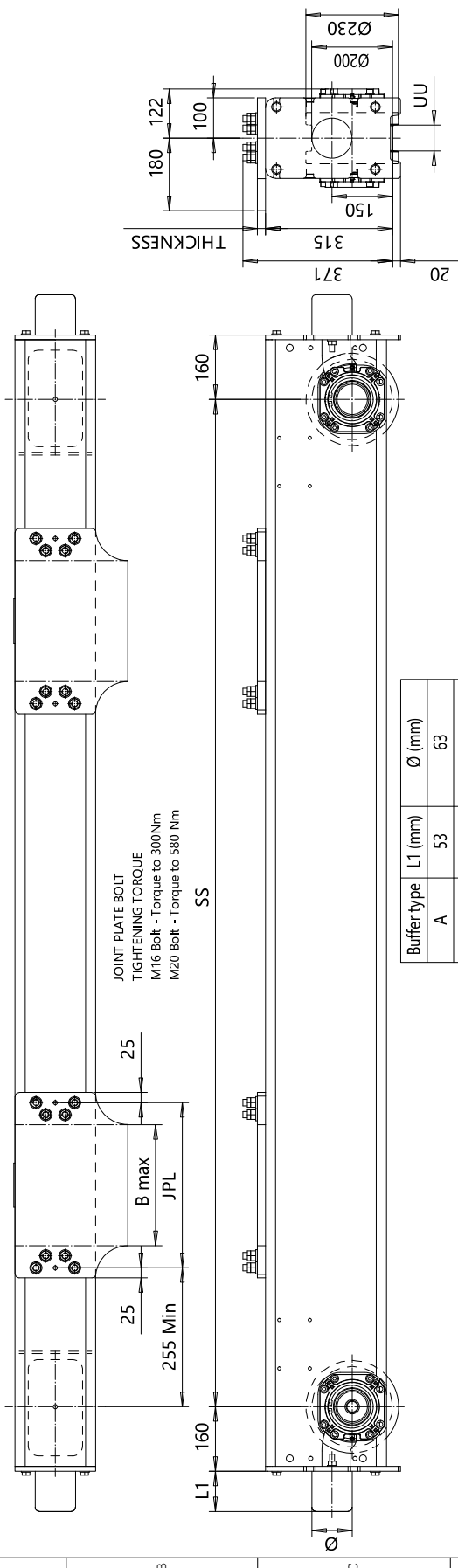


This document is the absolute property of R&M Materials Handling, Inc. This document must not be copied without the written permission of R&M Materials Handling, Inc. The contents thereof must not be disclosed to a third party nor be used for any unauthorized purpose. Conventions will be protected.

RTN20 END TRUCK TOP JOINT PLATE TYPE L



UU = 54 mm - 94 mm

The wheel loads listed are only a guideline. The max. wheel load listed is based on the structural integrity of the frame and load placement, and it does not take into account permissible wheel loading or bearing life. SG load placement is at the center, and DG load placement is for a trolley gage of 1400 mm [55 1/8"].

The permissible dynamic wheel load is based on assumptions that the bridge speed is 40 m/min (130 fpm), and truck duty is Fem 2m, and the runway fall as listed.

The actual wheel load should not exceed the permissible wheel load. If the permissible dynamic wheel load is greater than the maximum dyn wheel load, then the actual wheel load cannot exceed maximum dyn wheel load.

Dyn wheel load = 1.15 x static wheel load

Buffer type	L1 (mm)	Ø (mm)
A	53	63
B	68	80
C	85	100
D	105	125
K	80	80
G	100	100
E	150	100
F	190	125
H	160	160
I	200	200
M	125	125
P	240	160
K, G, E, F, H, I, M, P polyurethane		

Product Code example
RTN20-2574-L30990C0000-N

- RTN20 - RTN20 End Truck
- 2574 - Max whl load, (kN) ASCE 60# = 257
- L - Top joint plate type
- 30990 - Joint plate code
- C - Type of end carriage
- 0000 - Wheel base = 0
- N - Standard, E-Special

Legend:
 N - standard, E - Special
 - primer paint, color code (not in use with RTN20)
 Buffer type
 Joint plate distance (pin to pin, with double DG girder) (driving wheel to pin with asymmetrical single SG girder)
 Joint plate code
 - = IWD, D = ZWD (Number of driving wheels/end carriage)
 Wheel groove = UU
 Wheel base = SS
 - = std, C = asymmetrical joint
 Type of end carriage

Wheel base code	SS (mm)	Max whl load, (kN)	ASCE 60#	ASCE 85#	SG	Permissible dynamic wheel load, (kN)	Approximate weight / truck, (kg)
16	1600	132	88	98	234	DG	259
20	2000	132	88	98	263	DG	288
25	2500	132	88	98	299	DG	324
32	3150	112	88	98	346	DG	371
40	4000	75	88	98	408	DG	433
45	4500	53	88	98	444	DG	469

Joint plate	Thickness (mm)	Min. Wheelbase (mm)	JPL (mm)	B MAX (mm)
L3	25	2500; DG	410	300
L4	20	2500; DG	520	410
L5	20	2500; DG	630	520
L6	20	3150; DG	740	630

Rev	Description	Specification	Issued	Drawing
ETV/PH	Design	ETV/PH	App'd	Ref Drawing
2008-05-23	2008-05-23	END TRUCK		
Date	Date	OUTLINE DRAWING		
		RTN20-L		
R&M MATERIALS HANDLING INC.		110		
MATERIALS HANDLING		Folder		
RTN20 END TRUCK TOP JOINT		Issue		
		08/2013		