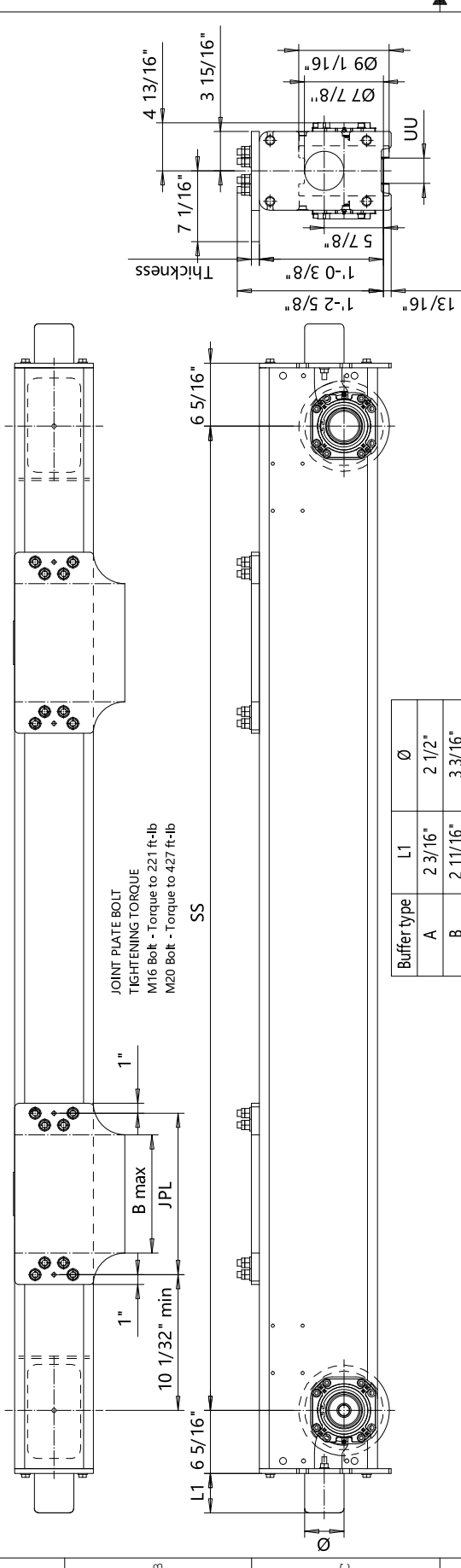


RTN20 END TRUCK TOP JOINT PLATE TYPE L



The wheel loads listed are only a guideline. The max. wheel load listed is based on the structural integrity of the frame and load placement, and it does not take into account permissible wheel loading or bearing life. SG load placement is at the center, and DG load placement is for a trolley gage of 1400 mm (55 1/8").

The permissible dynamic wheel load listed is based on assumptions that the bridge speed is 40 m/min (130 fpm) and truck duty is Fem 2m, and the runway fall as listed.

The actual wheel load should not exceed the permissible wheel load. If the permissible dynamic wheel load is greater than the maximum dyn wheel load, then the actual wheel load cannot exceed maximum dyn wheel load.

Dyn wheel load = 1.15 x static wheel load

Joint	Thickness	Min. Wheelbase	JPL	B MAX
plate	1"	Trolley gage = 55.12"		
L3	13/16"	8'-2 7/16"; DG	16.14"	11 13/16"
L4	13/16"	8'-2 7/16"; DG	20.47"	16 3/16"
L5	13/16"	8'-2 7/16"; DG	24.8"	20 1/2"
L6	13/16"	10'-4"; DG	29.13"	24 13/16"

Pos	Description	Specification	It	Drawing
ETV/VP	Design	ETV/VP		
2008-05-23	Date	2008-05-23		
Ref Drawing		END TRUCK		
OUTLINE DRAWING				
RTN20-L				
R&M MATERIALS HANDLING INC				
WHEEL GAGE SERVICES				
HANDLING SPRINGFIELD, OH				
Revision				
Date				
08/2013				

Buffer type	L1	Ø
A	2 3/16"	2 1/2"
B	2 11/16"	3 3/16"
C	3 5/16"	3 15/16"
D	4 1/8"	4 15/16"
K	3 3/16"	3 3/16"
G	3 15/16"	3 15/16"
E	5 15/16"	3 15/16"
F	7 1/2"	4 15/16"
H	6 5/16"	6 5/16"
I	7 7/8"	7 7/8"
M	4 15/16"	4 15/16"
P	9 7/16"	6 5/16"
K, G, E, H, I, M, P polyurethane		

Wheelbase code	SS	Max dyn whl load, (kip)	DG	29.7	19.8	ASCE 60#	ASCE 85#	SG	515	570	DG	570	634	713	818	953	1034
16	5'-3"	29.7	19.8	22	515	DG	570										
20	6'-6 3/4"	29.7	19.8	22	579	DG	634										
25	8'-2 7/16"	29.7	19.8	22	658	DG	713										
32	10'-4"	25.2	19.8	22	763	DG	818										
40	13'-1 1/2"	16.88	19.13	22	898	DG	953										
45	14'-9 3/16"	11.93	19.8	22	979	DG	1034										

Product Code example
RTN20-2574-L30990C0000-N

- N=standard, E=Special
- primer paint, color code (not in use with RTN20)
- Buffer type
- Joint plate distance (pin to pin, with double DG girder) (driving wheel to pin with asymmetrical single SG girder)
- Joint plate code
- = IWD, D = ZWD (Number of driving wheels/end carriage)
- Wheel groove = UU
- Wheel base = SS
- = std, C = asymmetrical joint
- Type of end carriage