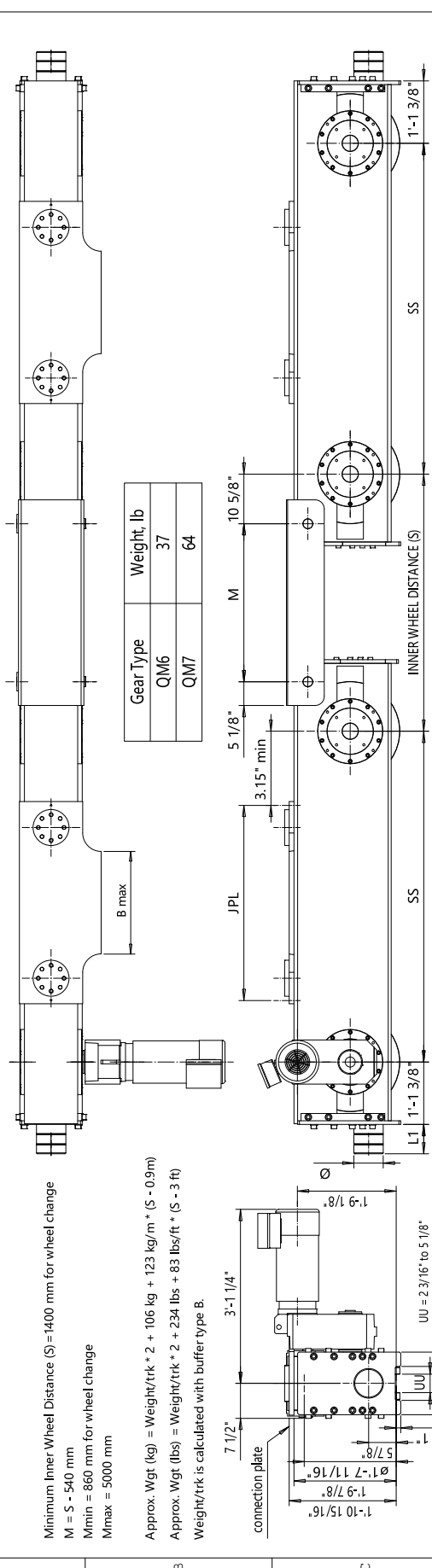


This document is the absolute property of R&M Materials Handling, Inc. This document must not be copied without the written permission of R&M Materials Handling, Inc. The contents thereof must not be disclosed to a third party nor be used for any unauthorized purpose. Contravention will be prosecuted.

RTN50B END TRUCK

TOP JOINT PLATE TYPE J



Minimum Inner Wheel Distance (S) = 1400 mm for wheel change
 M = S - 540 mm
 Mmin = 860 mm for wheel change
 Mmax = 5000 mm

Approx. Wgt (kg) = Weight/trk * 2 + 106 kg + 123 kg/m * (S - 0.9m)
 Approx. Wgt (lbs) = Weight/trk * 2 + 234 lbs + 83 lbs/ft * (S - 3 ft)
 Weight/trk is calculated with buffer type B.

The wheel loads listed are only a guideline. The max. dyn. wheel load listed is based on the structural integrity of the frame and load placement, and it does not take into account permissible wheel loading or bearing life. The load placement is at the center of each truck. The permissible dynamic wheel load listed is based on assumptions that the bridge speed is 32 m/min (100 fpm), end truck duty is ISO M5 (FEM 2m), and the runway rail as listed. The actual wheel load should not exceed the permissible wheel load. If the permissible dynamic wheel load is greater than the maximum dyn wheel load, then the actual wheel load cannot exceed maximum dyn wheel load.

Dyn wheel load = 1.15x static wheel load.

Product Code example
RT N50B1899SJ72407H1400-N

- N=standard, E=Special
- primer paint, color code
- Inner wheel distance (S), 1400 mm min.
- Buffer type
- Joint plate distance (pin to pin, with double DG girder)
- Joint plate code
- S = 1WD, D = 2WD (Number of driving wheels)
- Wheel groove = UU
- Wheel base = SS
- B = Bogie
- End truck model

Joint plate	JPL	B max	Weight/pc (lb)
J1	37.00"	19.29"	183
J2	46.85"	29.33"	236
J3	60.63"	41.14"	300
J4	40.94"	19.29"	223
J5	49.61"	29.33"	227
J6	64.57"	41.14"	342
J7	41.73"	24.0"	212
J8	45.67"	24.0"	247
J9	51.57"	33.86"	267
J0	55.51"	33.86"	298

Buffer type	L1	Ø	Wgt/pc, lbs
B	2 11/16"	3 3/16"	1.8
C	3 5/16"	3 15/16"	3.1
D	4 1/8"	4 15/16"	5.5
E	5 15/16"	3 15/16"	2.2
F	7 1/2"	4 15/16"	3.6
H	6 5/16"	6 5/16"	5.5
I	7 7/8"	7 7/8"	9.7
M	4 15/16"	4 15/16"	2
P	9 7/16"	6 5/16"	6.9
S	11 13/16"	7 7/8"	12.4
T	13 3/4"	9 7/8"	16.8
Y	18 3/4"	9 7/8"	23

Wheelbase code	SS	Max dyn whl load, (kip)	Perm dyn whl load, (kip)	Approx. Wt./Trk (lb)
16	5'-3"	ASC85	BETH 135	2395
18	5'-10 7/8"	65	BETH 171	2505
20	6'-6 3/4"	65	110	2615
22	7'-2 5/8"	65	110	2725
25	8'-2 7/16"	65	110	2890

B, C, D rubber
 K, G, E, F, H, I, M, P, S polyurethane

ETTPA CND	App'd	Ref Drawing
Design 2008-08-11		
Date		
SLE000CV		
Part		
END TRUCK		
OUTLINE DRAWING		
RTN50B-J		
ECN50B		
Rev	1-7	
Issue		
3/2017		