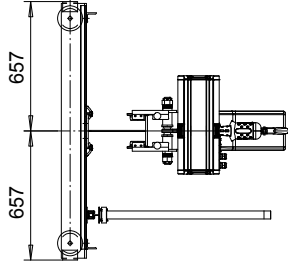
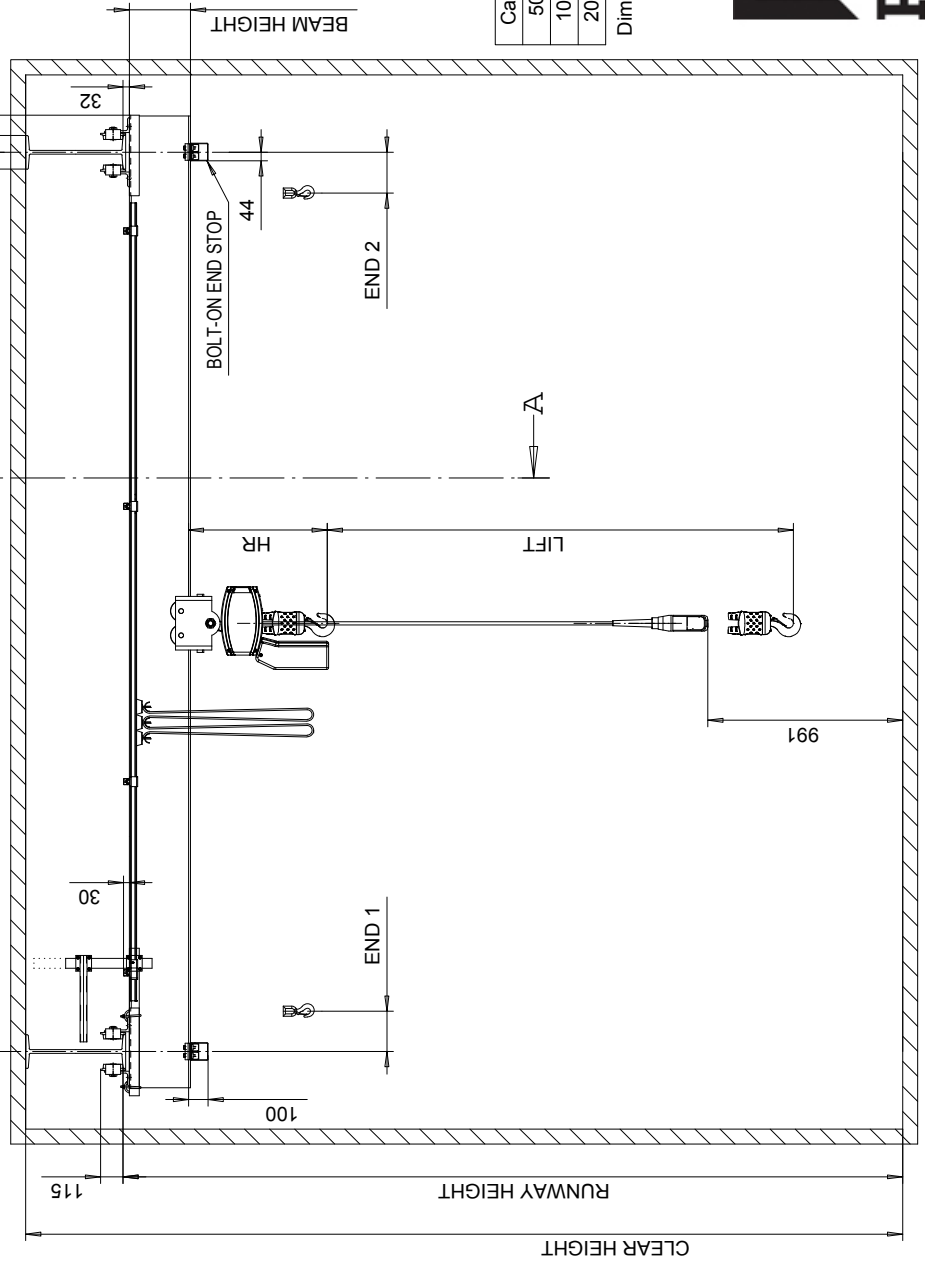


DETAIL - CRANE COLLECTOR ARM OPTION

104 + (1/2 x FLANGE WIDTH)
WITHOUT COLLECTOR ARM



VIEW A-A

Capacity	Hoist	HR, mm	END 1, mm	END 2, mm
500 kg	LK05 C - 1 fall	451	149	149
1000 kg	LK10 C - 1 fall	584	169	169
2000 kg	LK10 C - 2 fall	711	192	192

Dimensions are in millimeters.



QLP SGUR PUSH CRANE

SGUR PUSH CRANE LK1.vwp

9/2016