

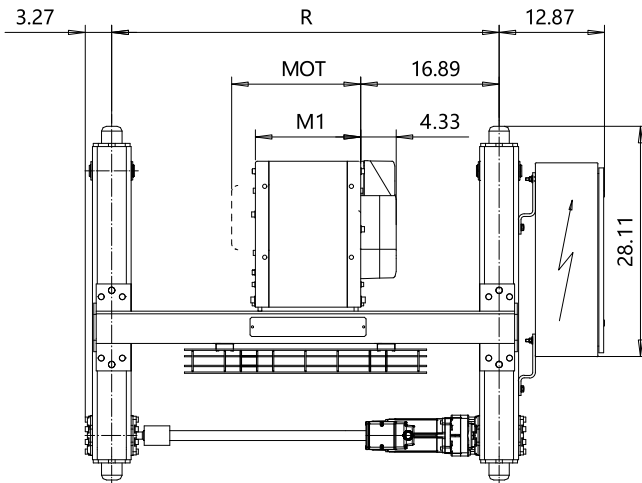
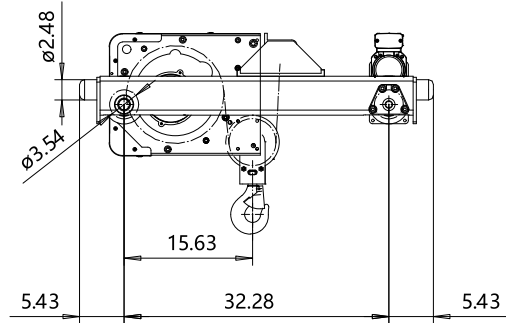
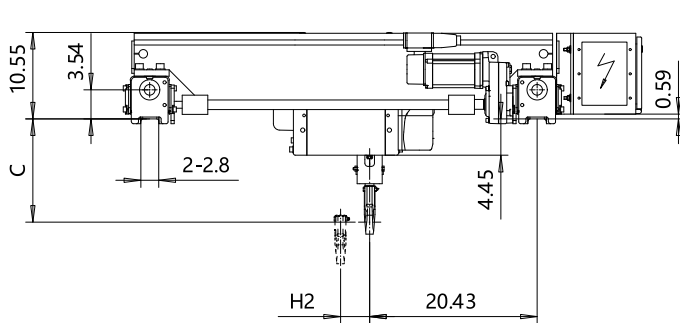
**DOUBLE GIRDER, MEDIUM, 2 PART SINGLE**

Hoist type:

SX2 021..D0

SX3 021..D0

US-60Hz



|             |      |      |      |      |      |
|-------------|------|------|------|------|------|
| Motor       | P1   | P2   | P3   | A3   | S3   |
| MOT (in)    | 15.2 | 17.6 | 18.7 | 17.6 | 20.7 |
| Weight (lb) | 46   | 68   | 77   | 71   | 62   |

| HOL (ft-in) | Length code | M1 (inch) | H2 (inch) | min R (ft-in) | Approx. Weight (lb) |
|-------------|-------------|-----------|-----------|---------------|---------------------|
| 39'-4"      | A           | 12.8      | 3.54      | 3'-11 1/4"    | 485                 |
| 62'-4"      | C           | 18        | 5.67      | 3'-11 1/4"    | 507                 |

| Headroom - C dimension               |           |
|--------------------------------------|-----------|
| Standard                             | 14 11/16" |
| with HS22 Hook operated limit switch | 17 1/2"   |

| Load (ton) | Class |
|------------|-------|
| 3/4        | H4 +  |
| 1          | H4    |
| 1 1/4      | H4 +  |
| 1 1/2      | H4    |

Note: minR is minimum rail gauge when second brake is supplied  
 Standard rail gauges are 3'-11 1/4", 4'-7 1/8", 5'-6 7/8", and 6'-6 3/4"  
 Approx. weight calculated with P1 motor and Min R.

This document is the absolute property of R&M Materials Handling, Inc. This document must not be copied without the written permission of R&M Materials Handling, Inc. The contents thereof must not be disclosed to a third party nor be used for any unauthorized purpose. Contravention will be prosecuted.

|                                      |   |      |             |                |
|--------------------------------------|---|------|-------------|----------------|
| Design                               | Chd   | Appd | Ref Drawing | QA-M-02        |
| Date                                 | TROLLEY; DOUBLE GIRDER  |      |             | 1:10<br>Fo Mir |
| SLEQMECE<br>Owner Dept               | MEDIUM, 2 ROPE FALLS  |      |             |                |
| R&M<br>MATERIALS<br>HANDLING<br>INC. | R&M MATERIALS HANDLING INC<br>HOIST & CRANE PRODUCTS<br>SPRINGFIELD, OHIO |      |             | Issue<br>9     |
| D002076-A                            |   |      |             |                |