

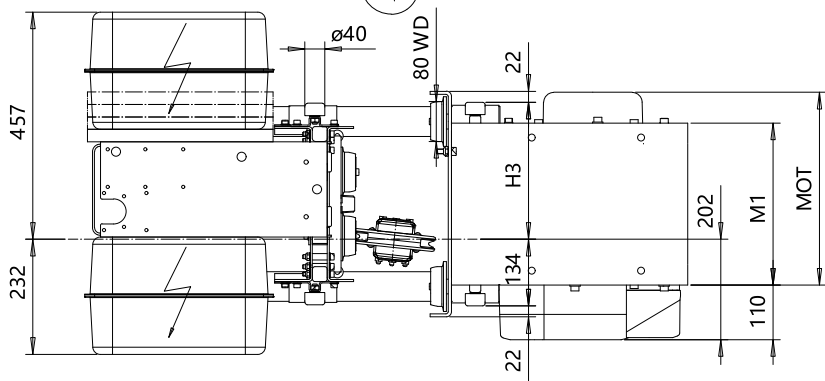
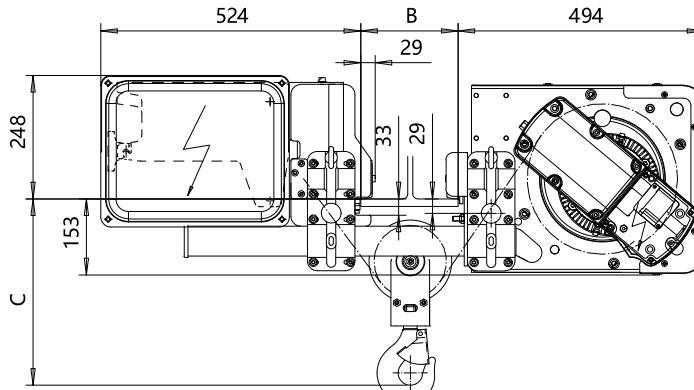
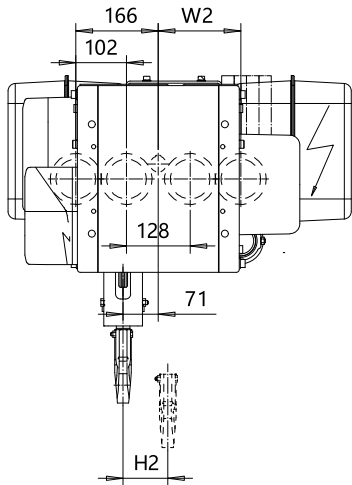
LOW HEADROOM, 2 PART SINGLE

Hoist type:

SX2 021..L0

SX3 021..L0

SI



| | | | | | |
|-------------|-----|-----|-----|-----|-----|
| Motor | P1 | P2 | P3 | A3 | S3 |
| MOT (mm) | 385 | 446 | 476 | 446 | 526 |
| Weight (kg) | 21 | 31 | 35 | 32 | 28 |

| HEADROOM TABLE - C DIMENSION | | |
|------------------------------|---------------------|--|
| Flange Width, B (mm) | Headroom, C (mm) | with HS22 Hook oper limit switch (mm) |
| 80 - 320 | 430 | 535 |
| 321 - 370 | 460 | 535 |
| 371 - 410 | 485 | 535 |
| 411 - 460 | 515 | 535 |
| 461 - 510 | 545 | 545 |
| 511 - 560 | 575 | 575 |
| 561 - 610 | 605 | 605 |
| 611 - 660 | 635 | 635 |
| 661 - 690 | 660 | 660 |

Headroom is related to the flange width

| Load (kg) | Class Fem/ISO |
|--------------|------------------|
| 800 | 3m/M6 |
| 1000 | 2m/M5 |
| 1250 | 3m/M6 |
| 1600 | 2m/M5 |

| HOL (m) | Length code | H2 (mm) | H3 (mm) | M1 (mm) | W2 (mm) | Approx Weight (kg) |
|------------|----------------|------------|------------|------------|------------|-----------------------|
| 12 | A | 90 | 274 | 326 | 166 | 210 |
| 19 | C | 144 | 404 | 456 | 231 | 230 |

Approx. weight calculated with P1 motor.

This document is the absolute property of R&M Materials Handling, Inc. This document must not be copied without the written permission of R&M Materials Handling, Inc. The contents thereof must not be disclosed to a third party nor be used for any unauthorized purpose. Contravention will be prosecuted.

| | | | | |
|---------------------------|---------------------------------------|-------|-------------|-----------|
| Design | Ctrl | App'd | Ref Drawing | QA-L-02 |
| Date | TROLLEY; LOW HEADROOM 2 ROPE FALLS | | | 1:1 (6:1) |
| SLEOMECE Designer/Dept | D002075-A | | | 9 |



R&M MATERIALS HANDLING, INC.
HOIST & CRANE PRODUCTS
SPRINGFIELD, OHIO