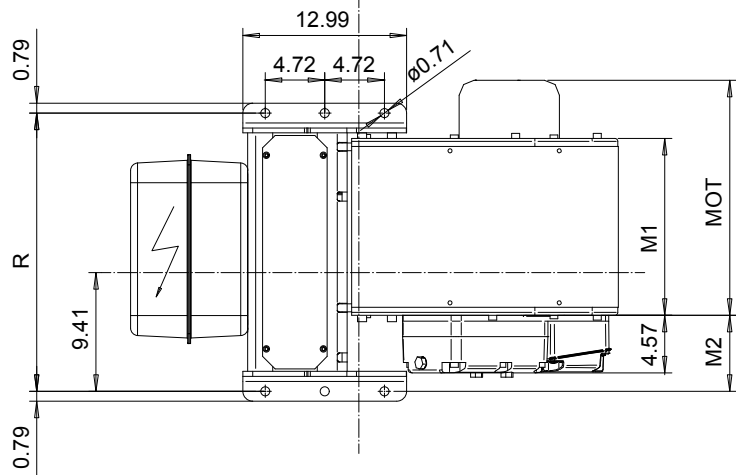
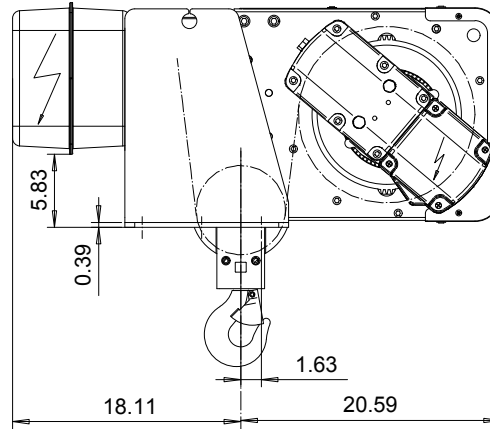
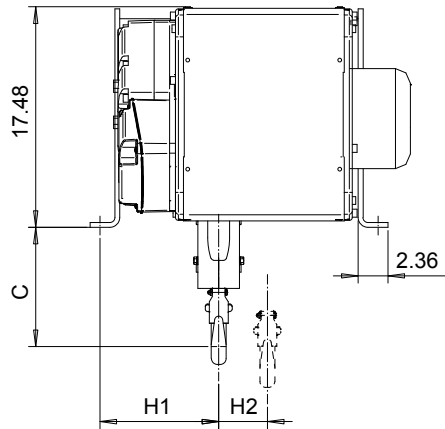


FOOT MOUNT, 2 PART SINGLE
Hoist type:
SX4 021...F0

US-60Hz



Headroom - C dimension	
Standard	9.5"
with HS22 Hook operated limit switch	18.5"

Motor	P3	P4	A3	S3	S5
MOT (in)	18.7	22.6	17.6	20.7	23.7
Weight (lb)	77	117	71	62	117

HOL	Length	M1	M2	H1	H2	R	Approx Weight
(ft)	code	(inch)	(inch)	(inch)	(inch)	(inch)	(lb)
39'-4"	B	14.03	6.03	9.41	3.86	22.05	390
59'-0"	C	17.95	2.09	5.47	5.79	22.05	410
78'-8"	D	21.89	2.09	5.47	7.72	30.71	440
98'-5"	E	26.61	2.09	5.47	10.08	30.71	480

Load	Class
(TON)	ASME
1 1/2	H4+
2	H4+
2 1/2	H4

Approx. weight calculated with P3 motor.

This document is the absolute property of R&M Materials Handling, Inc. This document must not be copied without the written permission of R&M Materials Handling, Inc. The contents thereof must not be disclosed to a third party nor be used for any unauthorized purpose. Contravention will be prosecuted.

CSDPAL Design	CSDPAL Chd	Appd	Ref Drawing	QB-F-02
2002-08-27 Date	HOIST; FIXED			1:6.5 Folder
SLEIENG1 Owner Dept	2 ROPE FALLS			
R&M MATERIALS HANDLING INC.	R&M MATERIALS HANDLING, INC. HOIST & CRANE PRODUCTS SPRINGFIELD, OHIO			Issue 7
D002086-A				