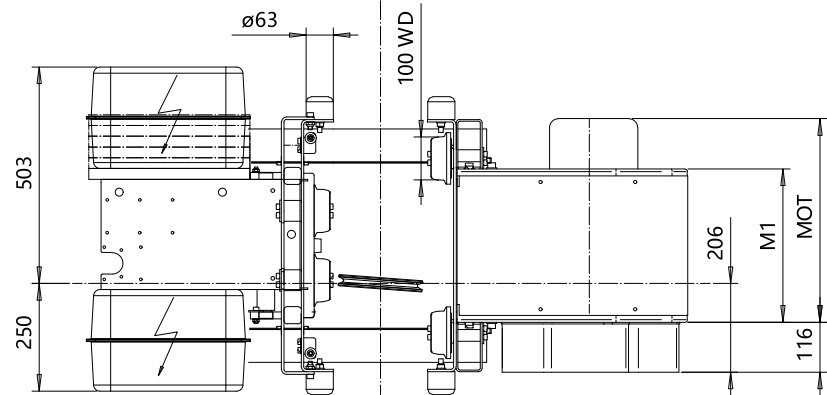
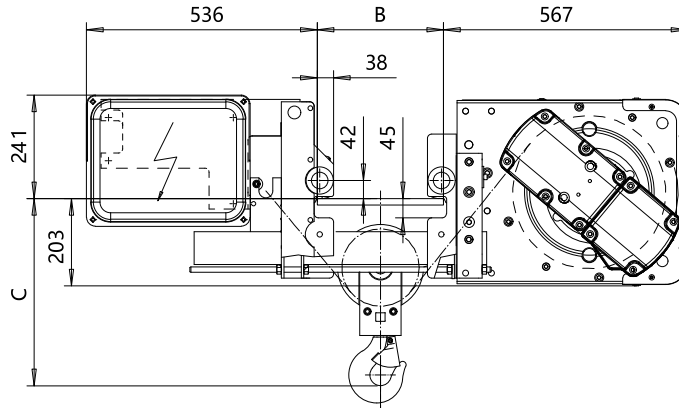
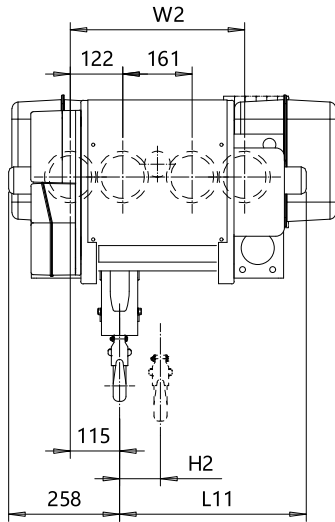


**LOW HEADROOM, 2 PART SINGLE**

**Hoist type:**

**SX4 021...L0**

SI



HEADROOM TABLE - C DIMENSION		
Flange Width, B (mm)	Headroom, C (mm)	with HS22 Hook oper limit switch (mm)
100 - 250	500	655
251 - 300	470	655
301 - 350	505	655
351 - 400	535	655
401 - 450	570	655
451 - 490	595	655
491 - 540	625	655
541 - 590	655	655
591 - 640	685	685
641 - 690	710	710

Headroom is related to the flange width

HOL	Length	H2	L11	M1	W2	Approx Weight
(m)	code	(mm)	(mm)	(mm)	(mm)	(kg)
12	B	95	346	356	405	378
18	C	144	446	456	505	398
24	D	193	546	556	605	418

Load	Class
(kg)	Fem/ISO
1600	3m/M6
2000	3m/M6
2500	2m/M5

Motor	P3	P4	A3	S3	S5
MOT (mm)	476	574	446	526	602
Weight (kg)	35	53	32	28	53

Approx. weight calculated with P1 motor.

ETPAL Design	ETPAL Chd	Appd	Ref Drawing	QB-L-02
2002-08-27 Date	TROLLEY; LOW HEADROOM			1-75
SLEDDOCV Owner Dept	2 ROPE FALLS			FoMar
R&M MATERIALS HANDLING INC.	R&M MATERIALS HANDLING INC HOIST & CRANE PRODUCTS SPRINGFIELD, OHIO	D002087-A		Issue 8

This document is the absolute property of R&M Materials Handling, Inc. This document must not be copied without the written permission of R&M Materials Handling, Inc. The contents thereof must not be disclosed to a third party nor be used for any unauthorized purpose. Contravention will be prosecuted.