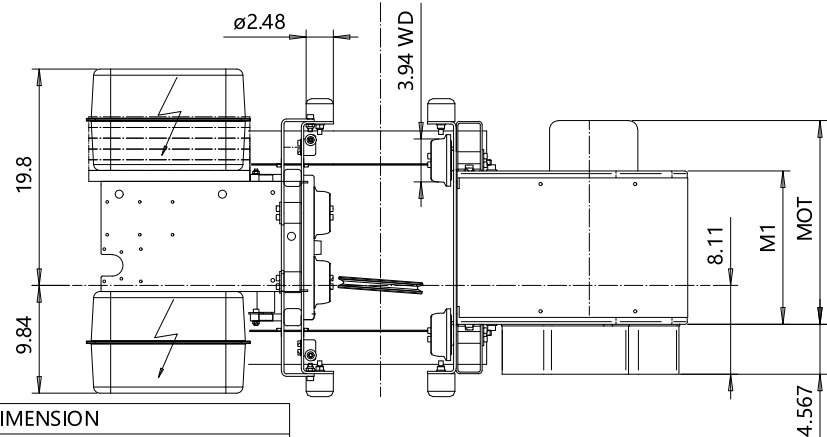
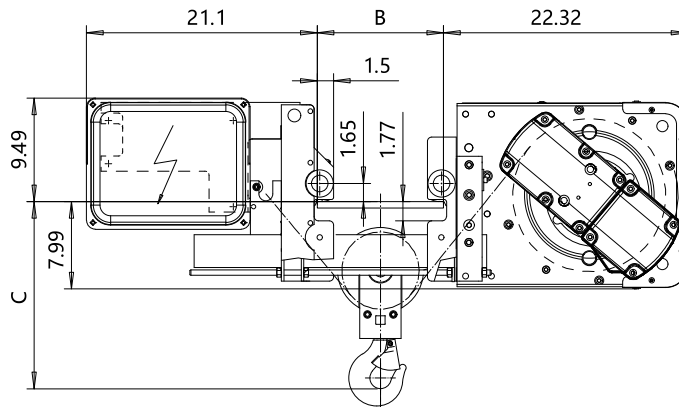
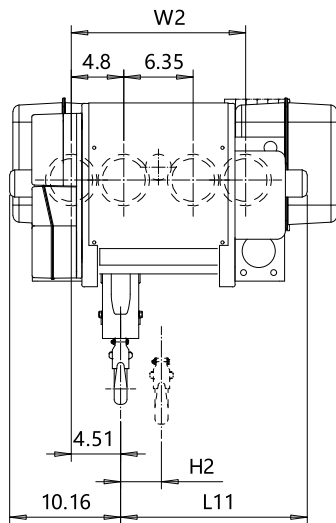


### LOW HEADROOM, 2 PART SINGLE

Hoist type:

SX4 021...L0

US-60Hz



HEADROOM TABLE - C DIMENSION		
Flange Width, B (in)	Headroom, C (in)	with HS22 Hook oper limit switch (in)
3.93 - 9.84	19 11/16	25 13/16
9.88 - 11.81	18 1/2	25 13/16
11.85 - 13.78	19 7/8	25 13/16
13.81 - 15.75	21 1/16	25 13/16
15.78 - 17.72	22 7/16	25 13/16
17.75 - 19.3	23 7/16	25 13/16
19.33 - 21.25	24 5/8	25 13/16
21.3 - 23.25	25 13/16	25 13/16
23.27 - 25.2	27	27
25.25 - 27.17	28	28

Headroom is related to the flange width

HOL (ft)	Length code	H2 (inch)	L11 (inch)	M1 (inch)	W2 (inch)	Approx Weight (lb)
39'-4"	B	3.74	13.62	14.03	15.94	834
59'-0"	C	5.66	17.56	17.95	19.88	878
78'-8"	D	7.59	21.5	21.89	23.81	922

Load (TON)	Class
1 1/2	H4 +
2	H4 +
2 1/2	H4

Motor	P3	P4	A3	S3	S5
MOT (in)	18.7	22.6	17.6	20.7	23.7
Weight (lb)	77	117	71	62	117

Approx. weight calculated with P1 motor.

This document is the absolute property of R&M Materials Handling, Inc. This document must not be copied without the written permission of R&M Materials Handling, Inc. The contents thereof must not be disclosed to a third party nor be used for any unauthorized purpose. Contravention will be prosecuted.

ETPAL Design	ETPAL Chd	Appd	Ref Drawing	QB-L-02
2002-08-27 Date	TROLLEY; LOW HEADROOM			1-75
SLEDDOCV Owner Dept	2 ROPE FALLS			FoMar
R&M MATERIALS HANDLING INC.	R&M MATERIALS HANDLING INC HOIST & CRANE PRODUCTS SPRINGFIELD, OHIO	D002087-A		Issue 8