

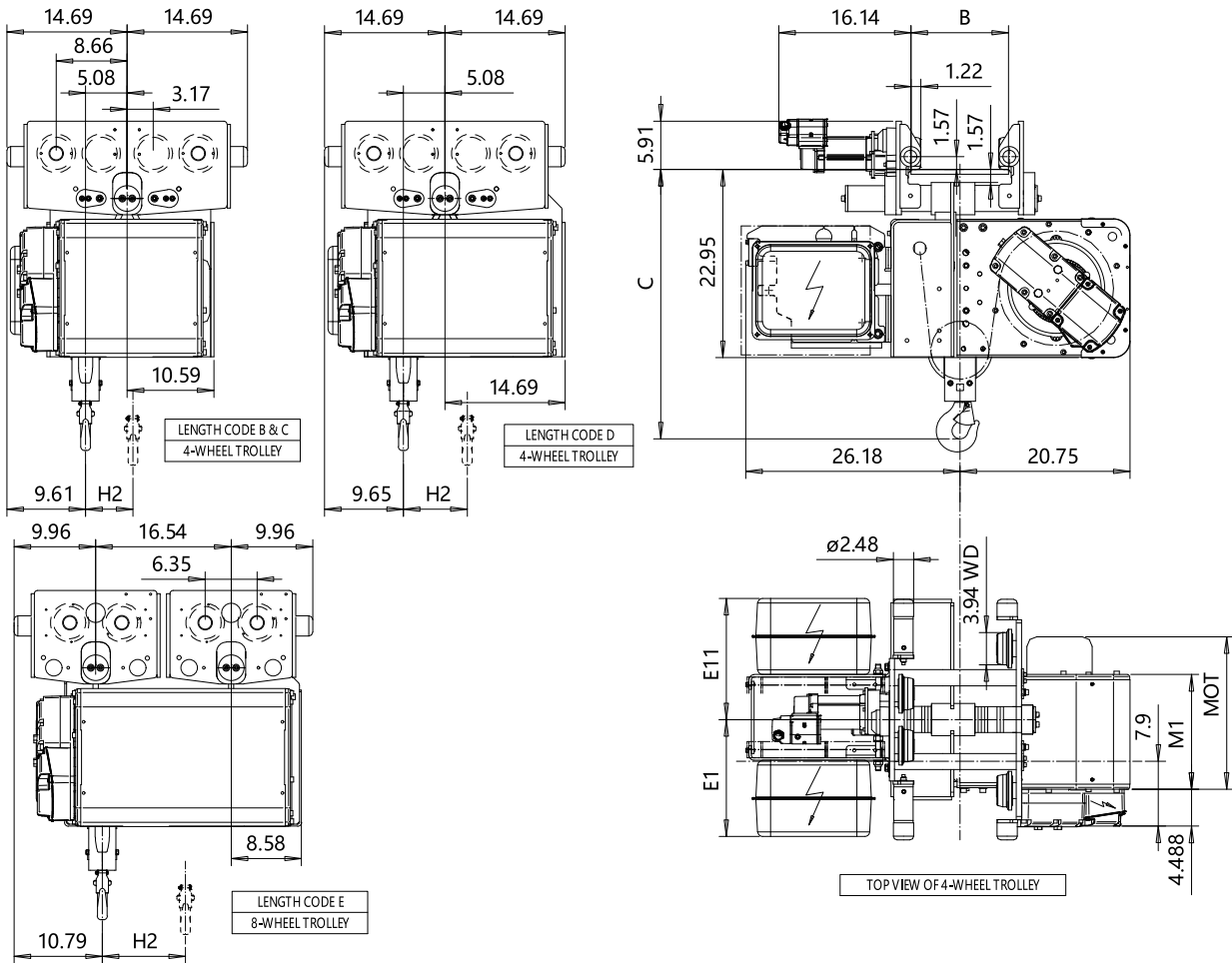
NORMAL HEADROOM, 2 PART SINGLE

Hoist type:

US-60Hz

SX4 021...N0

B = 4 3/4" - 17 3/4"



Headroom - C dimension	
Standard	38 1/8"
with HS22 Hook operated limit switch	38 1/2"

Motor	P3	P4	A3	S3	S5
MOT (in)	18.7	22.6	17.6	20.7	23.7
Weight (lb)	77	117	71	62	117

HOL (ft)	Length code	E1 (inch)	E11 (inch)	H2 (inch)	M1 (inch)	Approx Weight (lb)
39'-4"	B	14.25	14.8	3.85	14.03	888
59'-0"	C	14.25	14.8	5.78	17.96	977
78'-8"	D	14.25	14.8	7.79	21.89	1043
98'-5"	E	7.25	21.81	10.15	26.61	1175

Load (TON)	Class ASME
1 1/2	H4 +
2	H4 +
2 1/2	H4

This document is the absolute property of R&M Materials Handling, Inc. This document must not be copied without the written permission of R&M Materials Handling, Inc. The contents thereof must not be disclosed to a third party nor be used for any unauthorized purpose. Contravention will be prosecuted.

ETPAL Design	ETPAL Chd	Appd	Ref Drawing	QB-N-02
2002-08-27	TROLLEY; NORMAL HEADROOM			1:10 FoMar
SLEQDOCV Owner Dept	2 ROPE FALLS			
R&M MATERIALS HANDLING INC.	R&M MATERIALS HANDLING, INC. HOIST & CRANE PRODUCTS SPRINGFIELD, OHIO	D002090-A		Issue 10