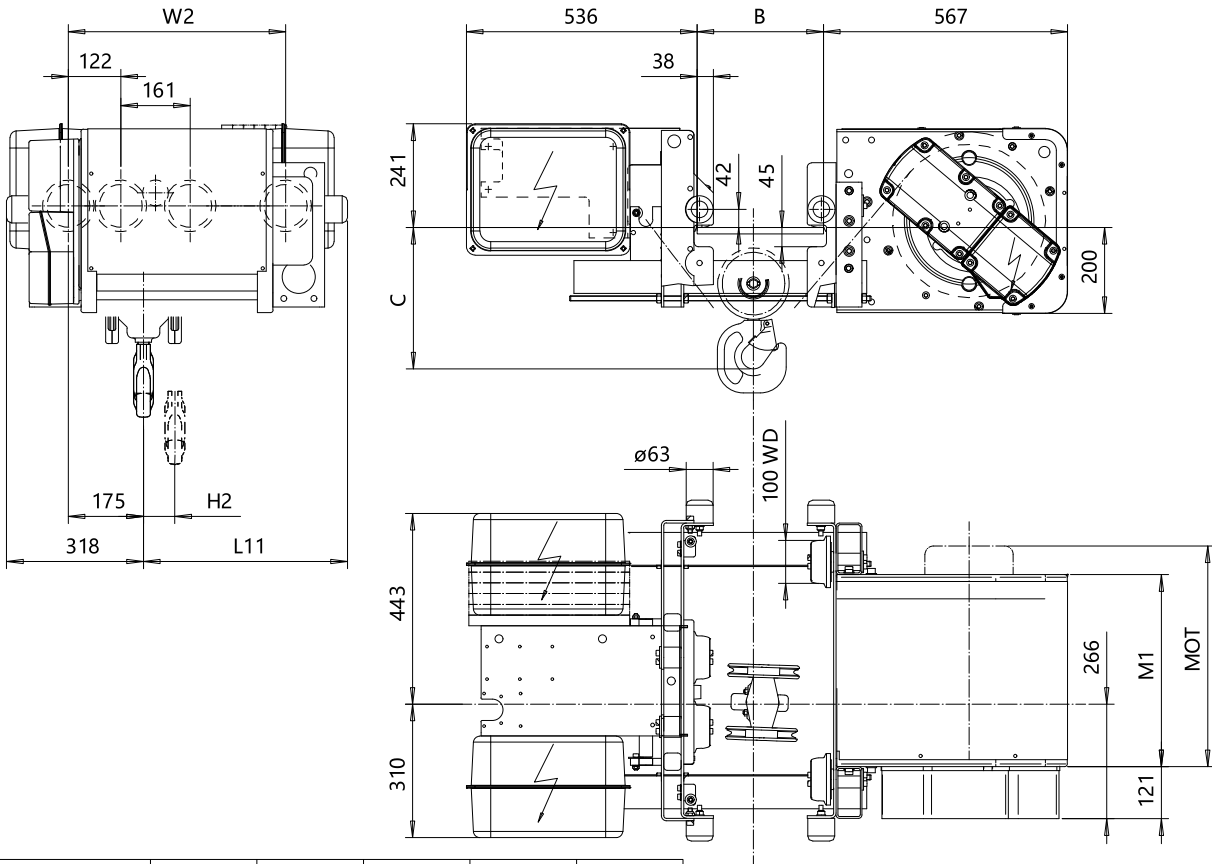


**LOW HEADROOM, 4 PART SINGLE (A4), SPECIAL**  
**Hoist type:**  
**SX4 041 (A4)...L0**

SI



Motor	P2	P4	A3	S3	S5
MOT (mm)	446	574	446	526	602
Weight (kg)	35	53	32	28	53

HEADROOM TABLE - C dimension		
Flange Width, B (mm)	Headroom, C (mm)	with HS22 Hook oper limit switch (mm)
100 - 300	420	555
301 - 350	420	555
351 - 400	445	555
401 - 450	480	555
451 - 490	510	555

Headroom is related to the flange width

HOL	Length	H3	L11	M1	W2	Approx Weight
(m)	code	(mm)	(mm)	(mm)	(mm)	(kg)
11	C	73	446	456	505	370
15	D	99	546	556	605	390

Load (kg)	Class Fem/ISO
2000	3m/M6
2500	3m/M6
3200	2m/M5

Rev Explanation Date Revised by Checked by

This document is the absolute property of R&M Materials Handling, Inc. This document must not be copied without the written permission of R&M Materials Handling, Inc. The contents thereof must not be disclosed to a third party nor be used for any unauthorized purpose. Contravention will be prosecuted.

CSDPAL Design 2002-08-28 Date	CSDPAL Chd Appd	Ref Drawing	QB-L-A4
TROLLEY; LOW HEADROOM			1:7.5 Foliar
4 ROPE FALLS, 3200 kg			
SLEQENG1 Owner Dept	R&M MATERIALS HANDLING INC.	R&M MATERIALS HANDLING INC HOIST & CRANE PRODUCTS SPRINGFIELD OHIO	Issue 6
D002107-A			