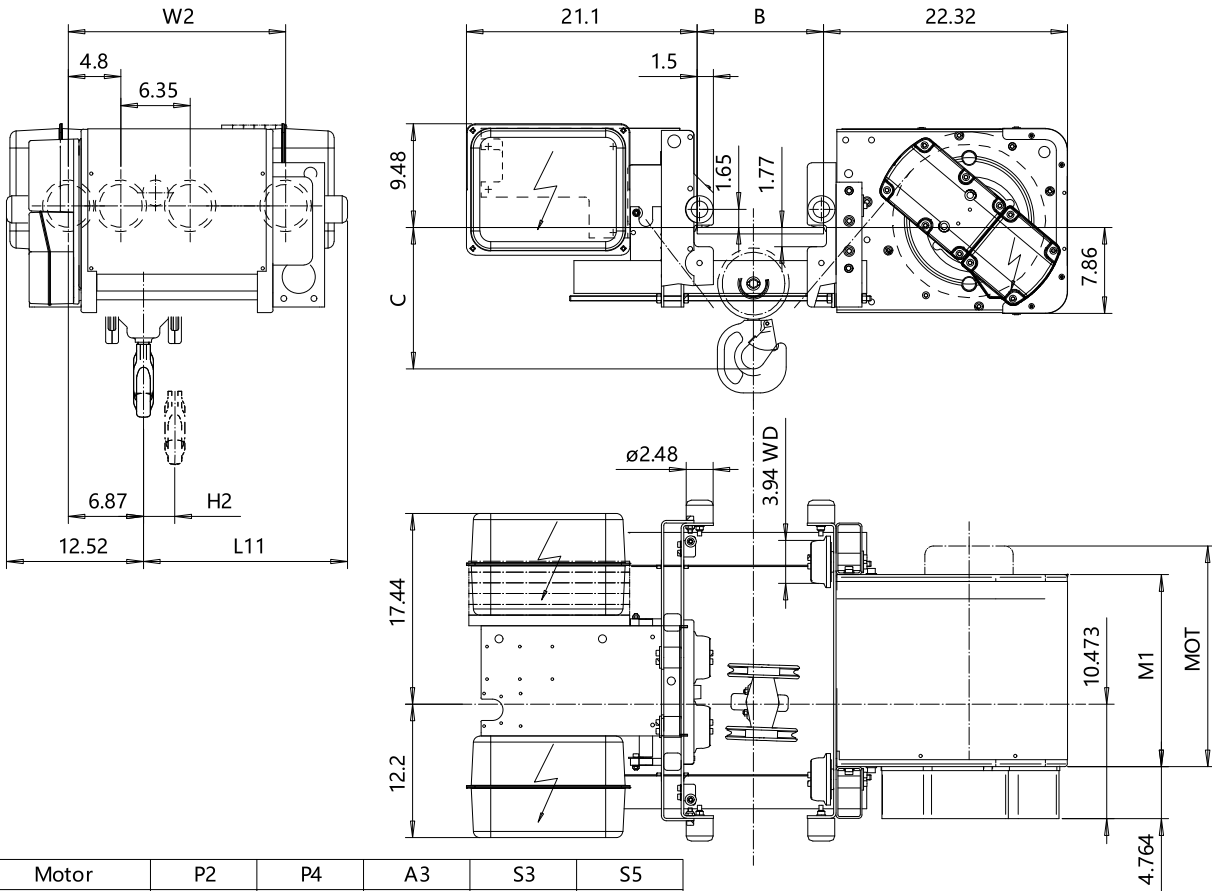


**LOW HEADROOM, 4 PART SINGLE (A4), SPECIAL**  
**Hoist type:**  
**SX4 041 (A4)...L0**

US-60Hz



Motor	P2	P4	A3	S3	S5
MOT (in)	17.56	22.6	17.6	20.7	23.7
Weight (lb)	77	117	71	62	117

HEADROOM TABLE - C dimension		
Flange Width, B (in)	Headroom, C (in)	with HS22 Hook oper limit switch (in)
3.93 - 11.81	16 9/16	21 7/8"
11.85 - 13.78	16 9/16	21 7/8"
13.81 - 15.75	17 1/2	21 7/8"
15.78 - 17.72	18 15/16	21 7/8"
17.75 - 19.3	20 1/4	21 7/8"

Headroom is related to the flange width

HOL (ft)	Length code	H3 (inch)	L11 (inch)	M1 (inch)	W2 (inch)	Approx Weight (lb)
36'-1"	C	2.87	17.56	17.95	19.88	816
49'-2"	D	3.89	21.5	21.89	23.81	860

Load (TON)	Class ASME
1	H4 +
1 1/2	H4 +
3	H4

CSDPAL Design		CSDPAL Chd		Appd	Ref Drawing	QB-L-A4
2002-08-28 Date		TROLLEY; LOW HEADROOM				
SLEQENG1 Owner Dept		4 ROPE FALLS, 3200 kg				
R&M MATERIALS HANDLING INC.		R&M MATERIALS HANDLING INC. HOIST & CRANE PRODUCTS SPRINGFIELD, OHIO				
D002107-A		Issue 6				

This document is the absolute property of R&M Materials Handling, Inc. This document must not be copied without the written permission of R&M Materials Handling, Inc. The contents thereof must not be disclosed to a third party nor be used for any unauthorized purpose. Contravention will be prosecuted.