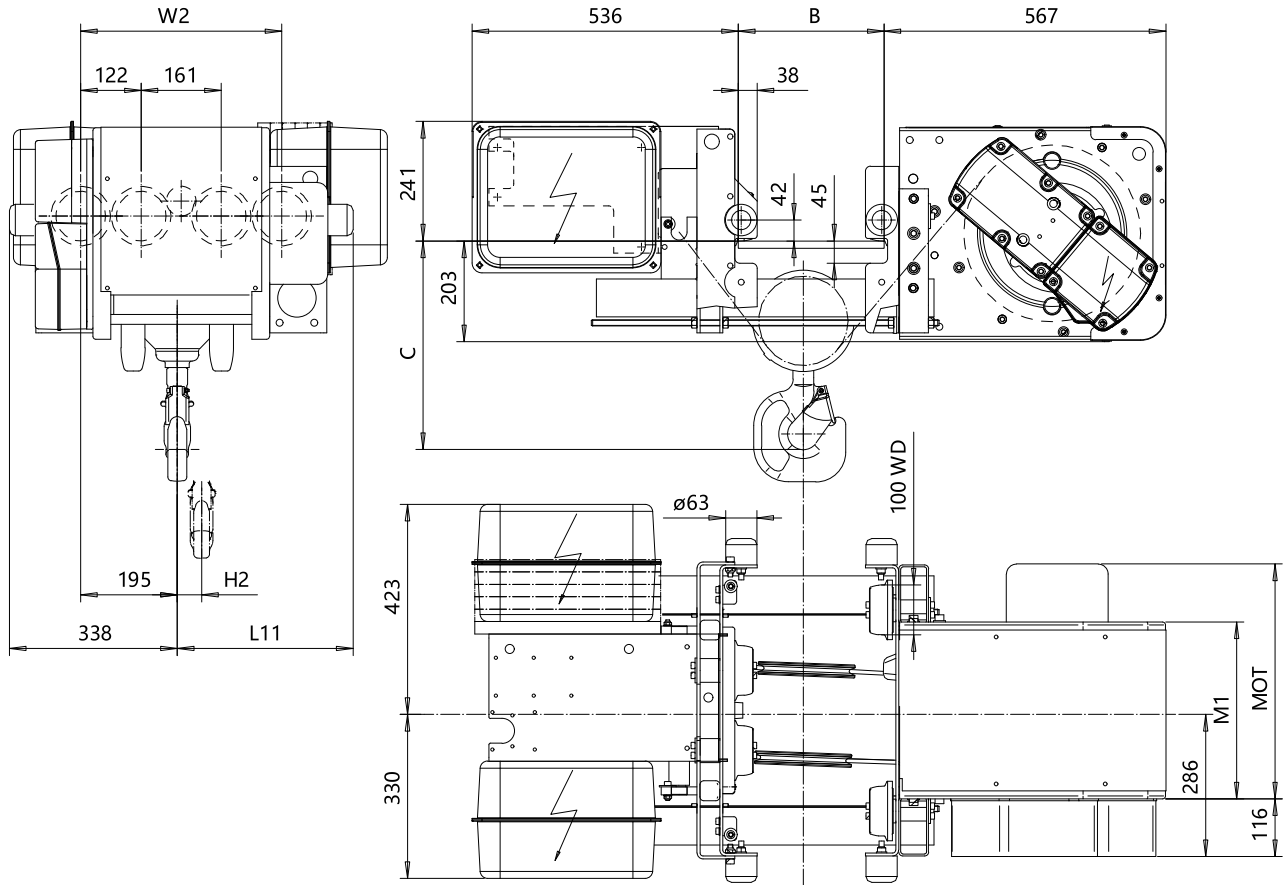


LOW HEADROOM, 4 PART SINGLE

Hoist type:

SX4 041...L0

SI



HEADROOM TABLE - C DIMENSION		
Flange Width, B (mm)	Headroom, C (mm)	with HS22 Hook open limit switch (mm)
100 - 199	550	590
200 - 249	500	590
250 - 300	480	590
301 - 350	455	590
351 - 400	490	590
401 - 450	520	590
451 - 490	550	590
491 - 540	580	590
541 - 590	610	610

Headroom is related to the flange width

Load (kg)	Class Fem/ISO
3000	3m/M6
4000	3m/M6
5000	2m/M5

HOL (m)	Length code	H2 (mm)	L11 (mm)	M1 (mm)	W2 (mm)	Approx Weight (kg)
6	B	49	346	356	405	383
9	C	74	446	456	505	403
12	D	99	546	556	605	423

Motor	P3	P4	A3	S3	S5
MOT (mm)	476	574	446	526	602
Weight (kg)	35	53	32	28	53

CSDPAL Design 2002-08-27 Date	CSDPAL Chd	Appd	Ref Drawing	QB-L-04
SLEQENG1 Owner Dept	TROLLEY; LOW HEADROOM 4 ROPE FALLS			1.6.5 FolMir
R&M MATERIALS HANDLING INC.	R&M MATERIALS HANDLING INC. HOIST & CRANE PRODUCTS SPRINGFIELD OHIO	D002092-A		Issue 7

This document is the absolute property of R&M Materials Handling, Inc. This document must not be copied without the written permission of R&M Materials Handling, Inc. The contents thereof must not be disclosed to a third party nor be used for any unauthorized purpose. Contravention will be prosecuted.