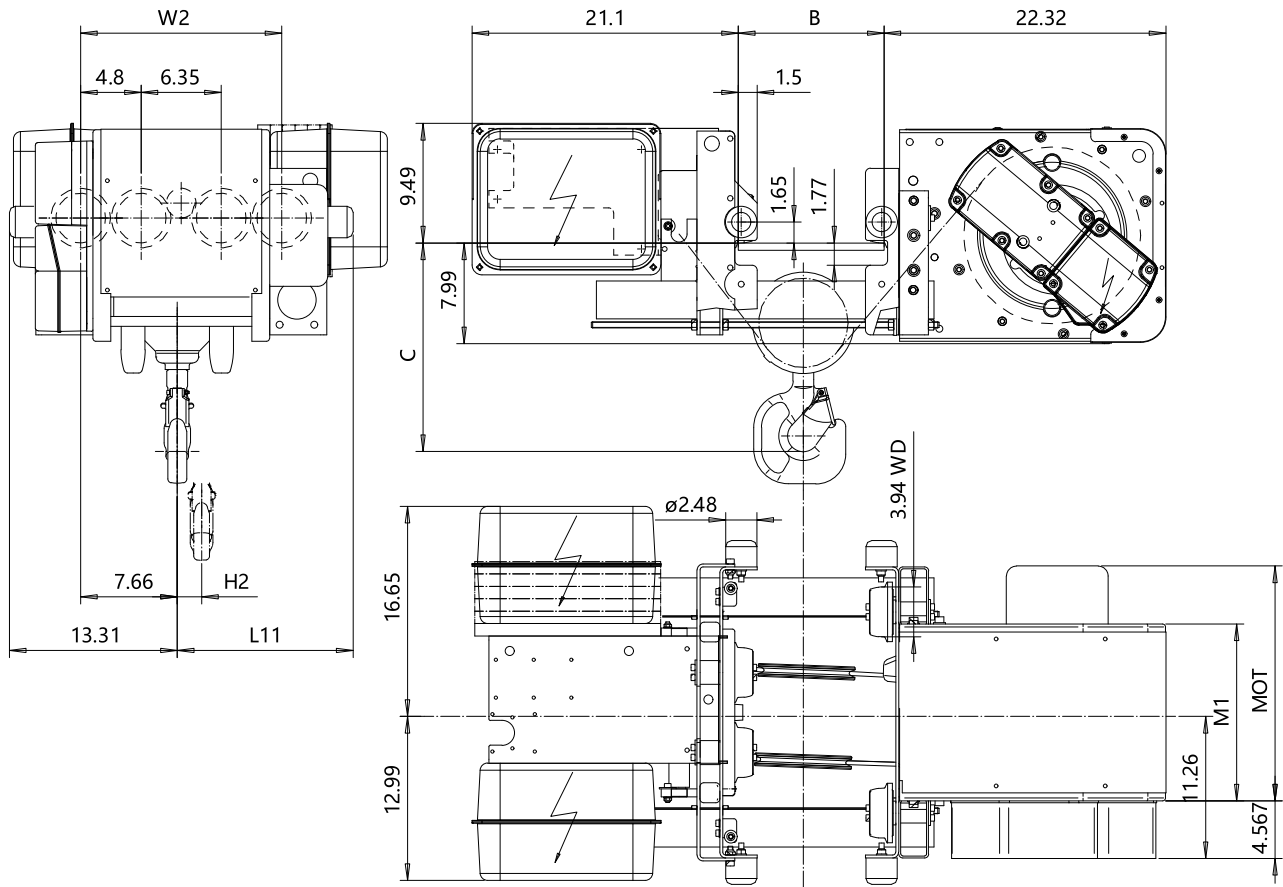


LOW HEADROOM, 4 PART SINGLE

Hoist type:

SX4 041...L0

US-60Hz



| HEADROOM TABLE - C DIMENSION | | |
|------------------------------|---------------------|--|
| Flange Width, B (in) | Headroom, C (in) | with HS22 Hook over limit switch (in) |
| 3.93 - 7.88 | 21 5/8 | 23 1/4 |
| 7.89 - 9.84 | 19 11/16 | 23 1/4 |
| 9.88 - 11.81 | 18 15/16 | 23 1/4 |
| 11.85 - 13.78 | 17 15/16 | 23 1/4 |
| 13.81 - 15.75 | 19 5/16 | 23 1/4 |
| 15.78 - 17.72 | 20 1/2 | 23 1/4 |
| 17.75 - 19.3 | 21 11/16 | 23 1/4 |
| 19.33 - 21.25 | 22 7/8 | 23 1/4 |
| 21.3 - 23.25 | 24 | 24 |

Headroom is related to the flange width

| Load (TON) | Class ASME |
|---------------|---------------|
| 3 | H4 + |
| 4 | H4 + |
| 5 | H4 |

| HOL (ft) | Length code | H2 (inch) | L11 (inch) | M1 (inch) | W2 (inch) | Approx Weight (lb) |
|-------------|----------------|--------------|---------------|--------------|--------------|-----------------------|
| 19'-8" | B | 1.92 | 13.62 | 14.03 | 15.94 | 845 |
| 29'-6" | C | 2.91 | 17.56 | 17.95 | 19.88 | 889 |
| 39'-4" | D | 3.89 | 21.5 | 21.89 | 23.81 | 933 |

| Motor | P3 | P4 | A3 | S3 | S5 |
|-------------|------|------|------|------|------|
| MOT (in) | 18.7 | 22.6 | 17.6 | 20.7 | 23.7 |
| Weight (lb) | 77 | 117 | 71 | 62 | 117 |

| | | | |
|--|---|-------------|----------------|
| CSDPAL Design 2002-08-27 Date | CSDPAL Chd Appd | Ref Drawing | QB-L-04 |
| SLEQENG1 Owner Dept | TROLLEY; LOW HEADROOM 4 ROPE FALLS | | 1.65 FolMir |
| R&M MATERIALS HANDLING INC. | R&M MATERIALS HANDLING INC. HOIST & CRANE PRODUCTS SPRINGFIELD OHIO | D002092-A | Issue 7 |

This document is the absolute property of R&M Materials Handling, Inc. This document must not be copied without the written permission of R&M Materials Handling, Inc. The contents thereof must not be disclosed to a third party nor be used for any unauthorized purpose. Contravention will be prosecuted.