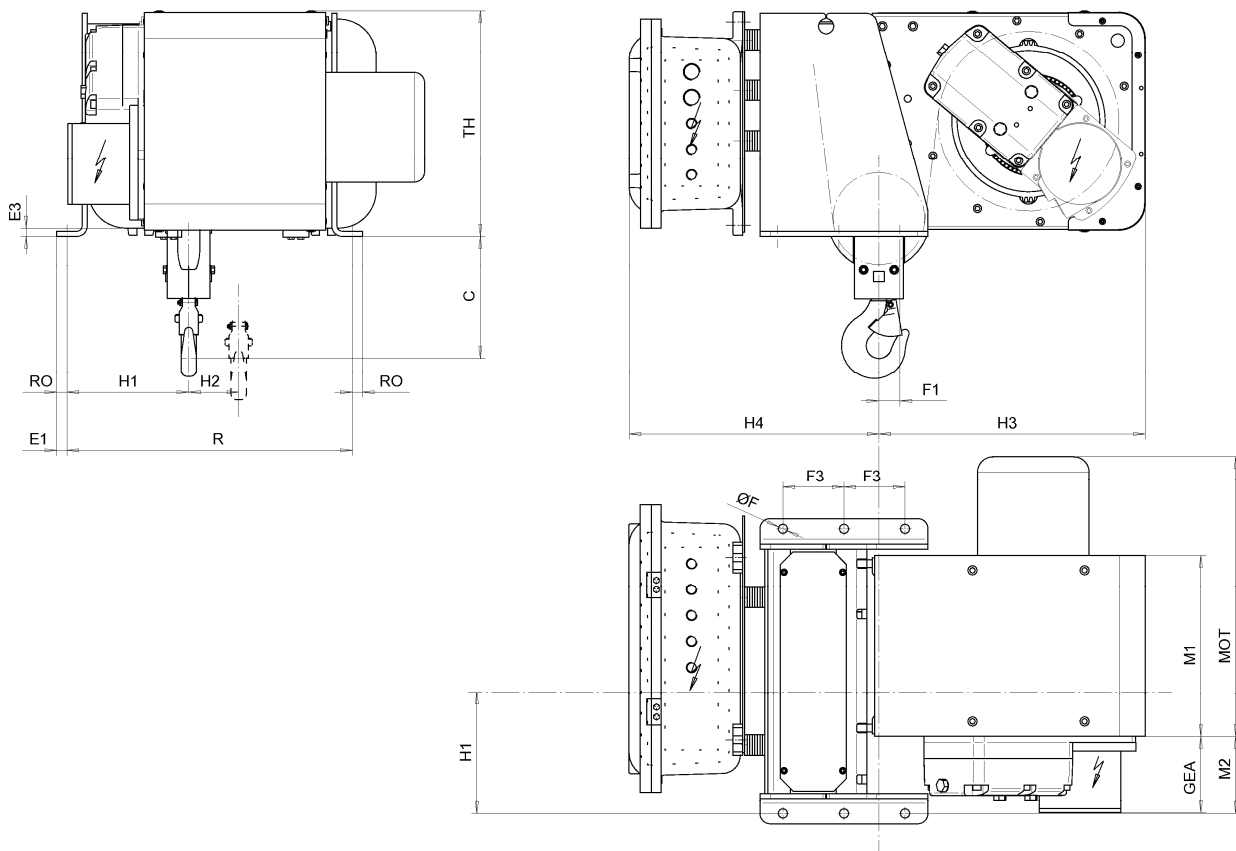


Fixed Hoist EXSX4, REEVING: 021; Class I, Division 2



D007609-A

Hoist dimensions

HOL m	Length code	M1 mm	M2 mm	H1 mm	H2 mm	H3 mm	H3* mm	R mm	Weight kg
12	B	356	152	239	98	523	539	560	356
18	C	456	52	139	147	523	539	560	366
24	D	556	52	139	196	523	539	780	390
30	E	676	52	139	256	523	539	780	405

Motor dimensions

Motor	P1	P3
MOT (mm)	386	473
Weight (kg)	21	35

Trolley dimensions

C	∅F	E1	E3	F1	F3	GEA	H4	RO	TH
240	18	20	16.1	41.5	120	150	490	20	445

D007609_A
252676

Note: All dimensions in mm.

Note: Weight calculated with P1 motor.

* Please, disregard the dimension H3*.