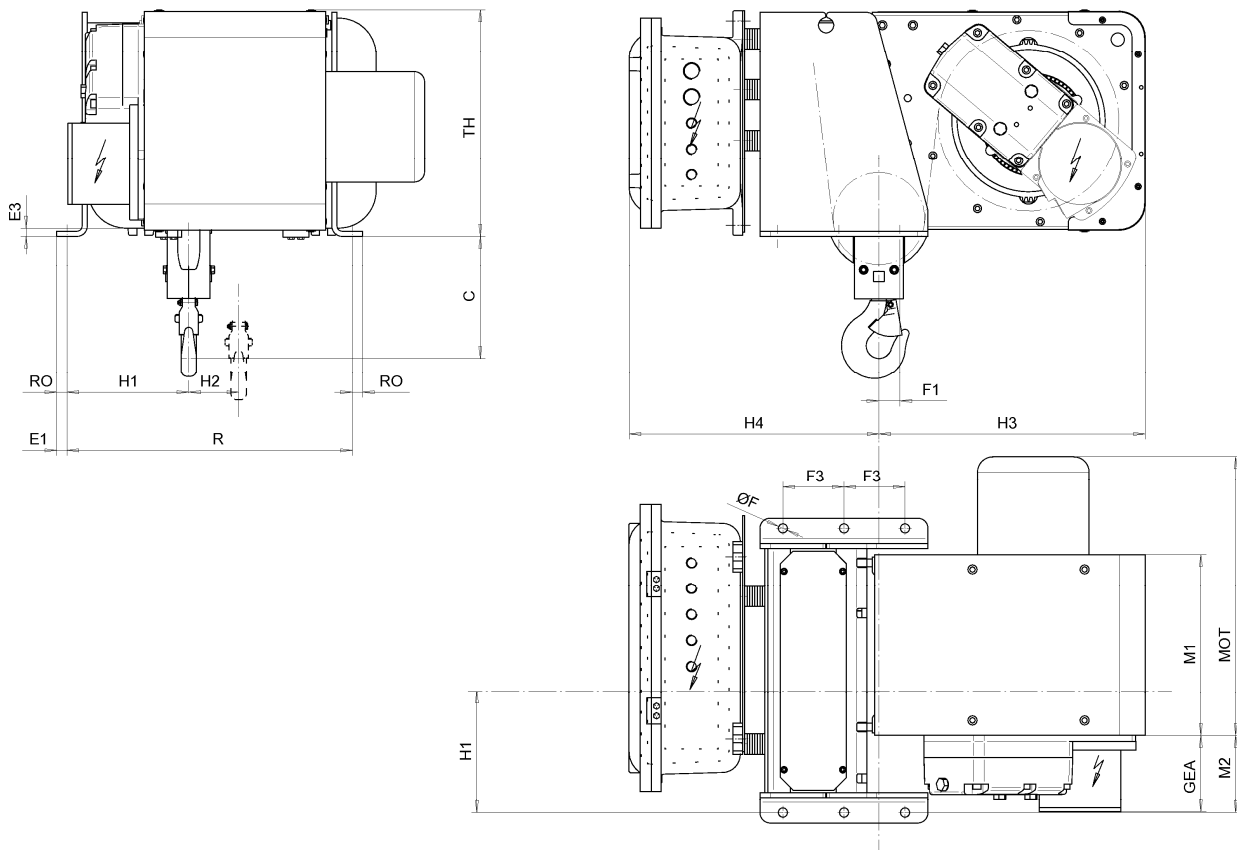


Fixed Hoist EXSX4, REEVING: 021; Class I, Division 2



D007609-A

**Hoist dimensions**

HOL ft	Length code	M1 inch	M2 inch	H1 inch	H2 inch	H3 inch	H3* inch	R inch	Weight lb
39'-4"	B	14.02	5.98	9.41	3.86	20.59	21.22	22.05	785
59'-1"	C	17.95	2.05	5.47	5.79	20.59	21.22	22.05	807
78'-9"	D	21.89	2.05	5.47	7.72	20.59	21.22	30.71	860
98'-5"	E	26.61	2.05	5.47	10.08	20.59	21.22	30.71	893

**Motor dimensions**

Motor	P1	P3
MOT (inch)	15.2	18.62
Weight (lb)	46	77

**Trolley dimensions**

C	ØF	E1	E3	F1	F3	GEA	H4	RO	TH		
9.45	0.71	0.79	0.63	1.63	4.72	5.91	19.29	0.79	17.52		

D007609\_A  
252676

Note: All dimensions in inch.  
 Note: Weight calculated with P1 motor.  
 \* Please, disregard the dimension H3\*.