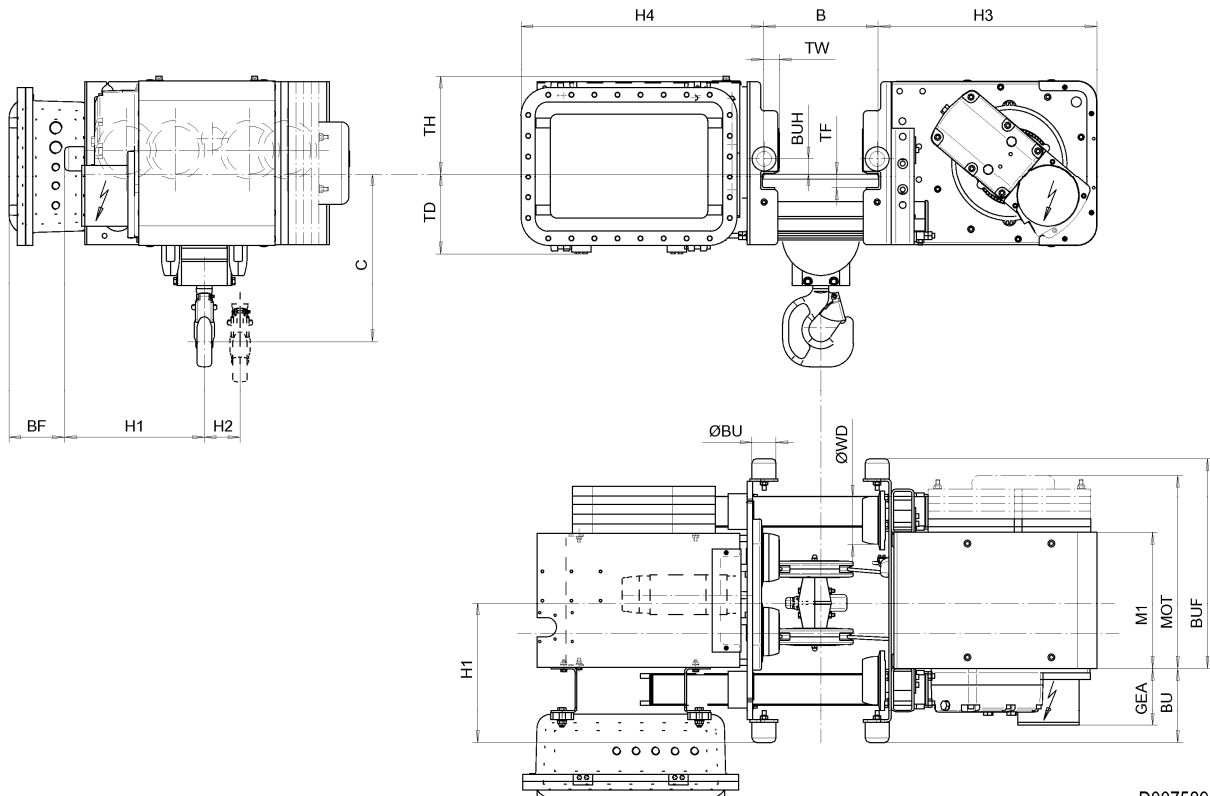


Low Headroom Hoist EXSX4, REEVING: 041; Class I, Division 2



D007589-A

Hoist dimensions

HOL m	Length code	M1 mm	H1 mm	H2 mm	H3 mm	H3* mm	H4 mm	BUF mm	Weight kg
6	B	356	366	49	573	589	635	551	673
9	C	456	366	74	573	589	635	651	678
12	D	556	366	99	573	589	635	751	670

Motor dimensions

Motor	P1	P3
MOT (mm)	386	473
Weight (kg)	21	35

Traveling dimensions

Motor	MF06LA
Weight (kg)	7.8

Trolley dimensions

B min.	B max.	ØWD	ØBU	BF	BU	BUH	GEA	TD	TF	TH	TW
100	490	125	63	145	195	40	150	209	37	255	41.5

D007589-A

252057

C-dimensions

B	C
100 - 199	490
200 - 249	460
250 - 300	425
301 - 350	455
351 - 400	490
401 - 450	520
451 - 490	550

Note: All dimensions in mm.

Note: Weight calculated with P1 and MF06LA motors when B=300 mm.

* Please, disregard the dimension H3*.