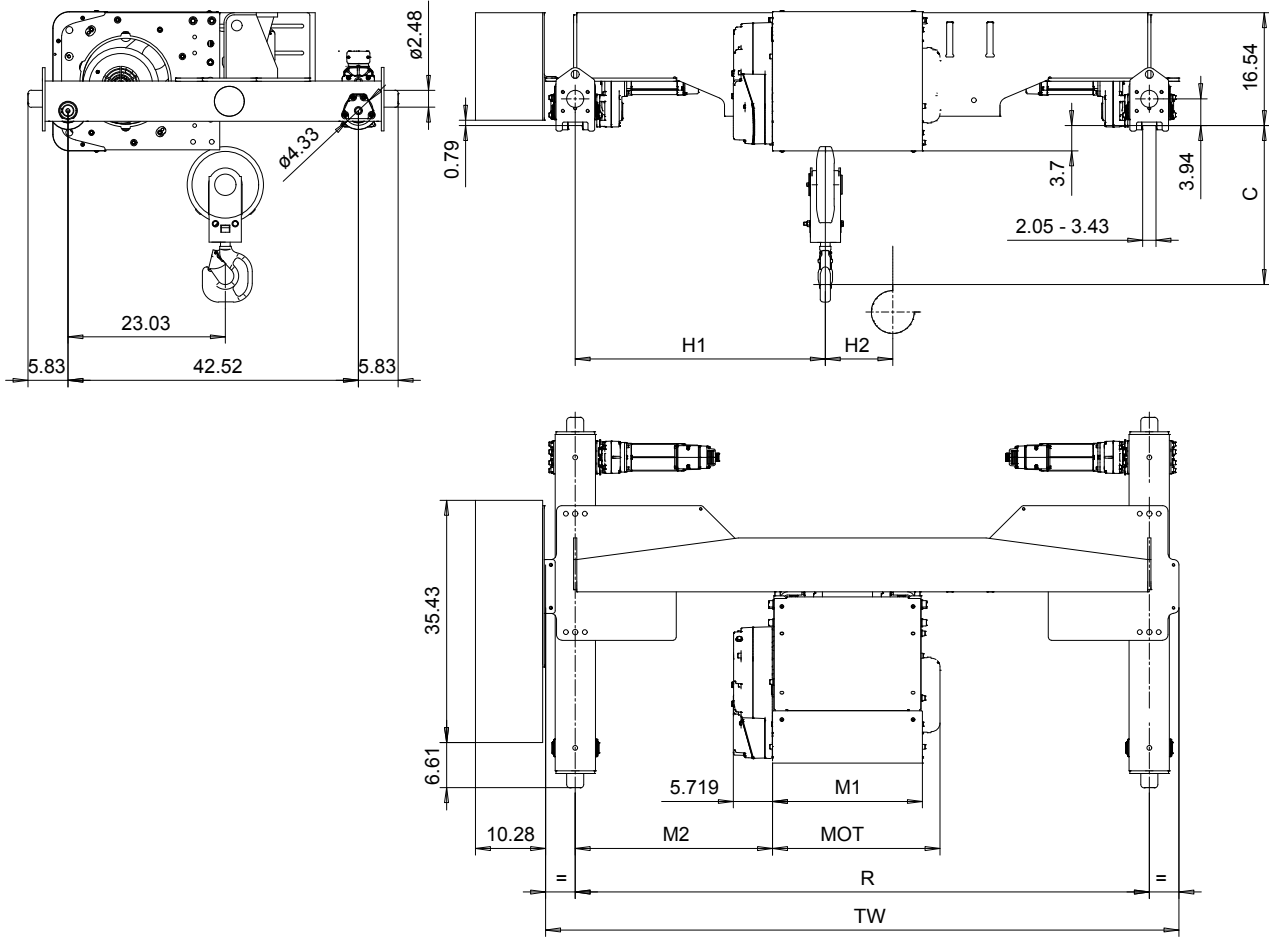


DOUBLE GIRDER, ADJUSTABLE LOAD BEAM, 2 PART SINGLE
 Hoist type:
 SX5 021...D0

US-60Hz



Motor	P5	P6	P7	A5	S5	S7
MOT (in)	22.76	22.76	24.33	19.61	23.86	29.8
Weight (lb)	128	187	231	99	117	179

Load (ton)	Class ASME
4	H4+
5	H4

HOL (ft)	Length code	M1 (inch)	M2 (inch)	H1 (inch)	H2 (inch)	TW (inch)	Min R	Max R	Approx Weight (lb)
59'-0"	D	21.97	16.85	24.61	6.93	92.68	5'-0"	7'-0"	1477
78'-4"	E	26.69	16.85	24.61	9.25	92.68	5'-0"	7'-0"	1543
104'-11"	F	32.6	16.85	24.61	12.17	92.68	5'-0"	7'-0"	1642

Headroom - C dimension	
Standard	20.5"
with HS22 Hook operated limit switch	22.5"

Note: H1 and M2 are calculated from Min R.
 Special rail gauges from 5'-0" to 7'-0"
 Approx weight calculated with P5 motor

This document is the absolute property of R&M Materials Handling, Inc. This document must not be copied without the written permission of R&M Materials Handling, Inc. The contents thereof must not be disclosed to a third party nor be used for any unauthorized purpose. Contravention will be prosecuted.

ETTPAL Design	ETTPAL Chd	Appd	Ref Drawing	QC-ALB-02
2018-05-12 Date	TROLLEY; DOUBLE GIRDER			1:12
SLEQDQCV Owner Dept	ADJUSTABLE LOAD BEAM, 2 ROPE FALLS			Folder
R&M MATERIALS HANDLING INC.	R&M MATERIALS HANDLING, INC. HOIST & CRANE PRODUCTS SPRINGFIELD, OHIO	D53825437-vxp1-1		Issue 1