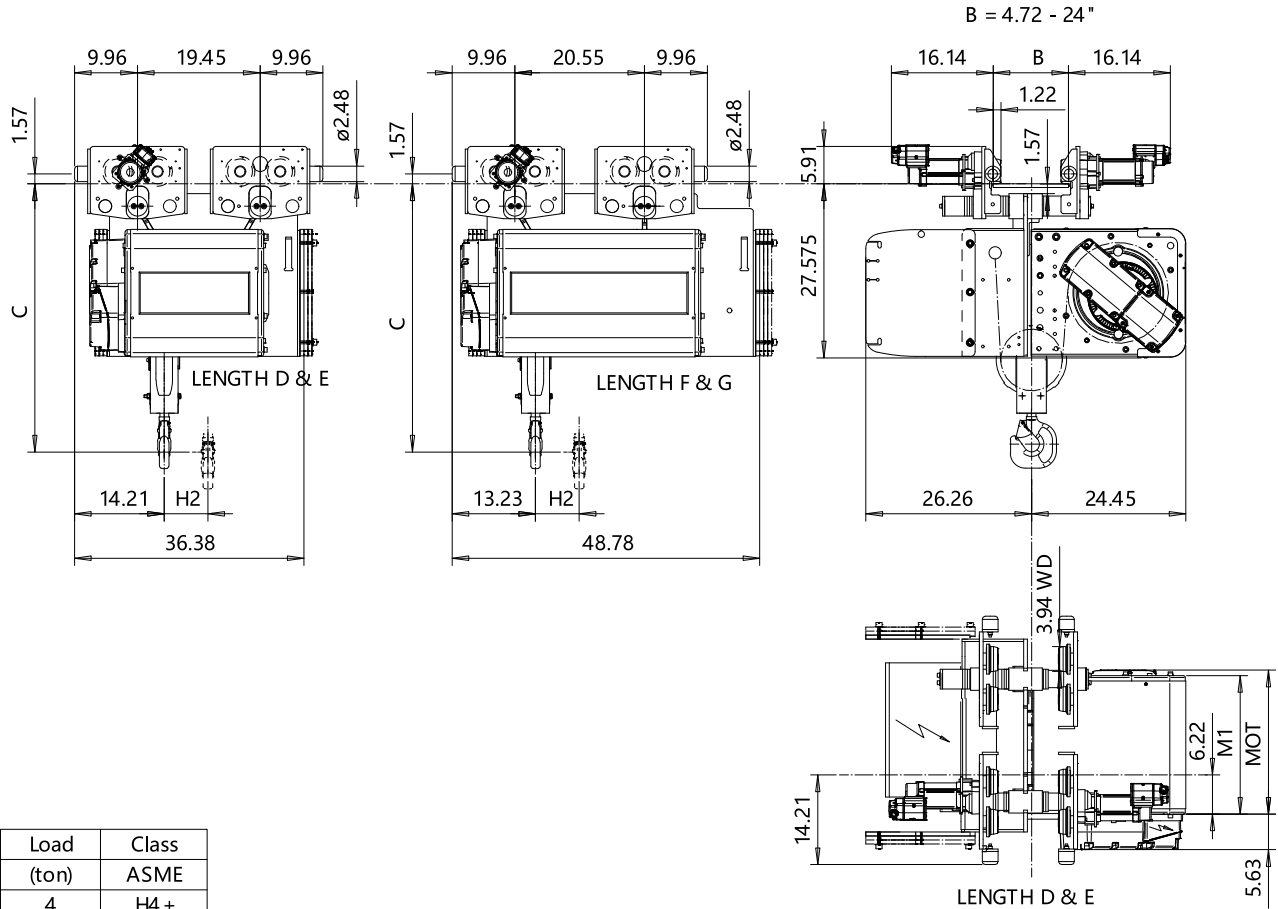


NORMAL HEADROOM, 2 PART SINGLE

Hoist type:
SX5 021...N0

US-60Hz



Load (ton)	Class ASME
4	H4 +
5	H4

Motor	P5	P6	P7	A5	S5	S7
MOT (in)	22.76	22.76	24.33	19.61	23.86	29.8
Weight (lb)	128	187	231	99	117	179

HOL (ft)	Length code	M1 (inch)	H2 (inch)	Approx Weight (lb)
59'-0"	D	21.97	6.92	1654
78'-8"	E	26.69	9.25	1808
104'-11"	F	32.6	12.16	1984
131'-2"	G	45.55	15.86	2116

Headroom - C dimension	
Standard	42 15/16"
with HS22 Hook operated limit switch	47 1/4"

Approx. Weight calculated with P5 motor.

This document is the absolute property of R&M Materials Handling, Inc. This document must not be copied without the written permission of R&M Materials Handling, Inc. The contents thereof must not be disclosed to a third party nor be used for any unauthorized purpose. Contravention will be prosecuted.

ETPAL Design	ETPAL Chd	Appd	Ref Drawing	QC-N-02
2002-08-29 Date	TROLLEY; NORMAL HEADROOM			1:13
SLEDDOCV Owner Dept	2 ROPE FALLS			For Mar
R&M MATERIALS HANDLING INC.	ESAM MATERIALS HANDLING INC HOIST & CRANE PRODUCTS SPRINGFIELD, OHIO	D002114-A		Issue 10