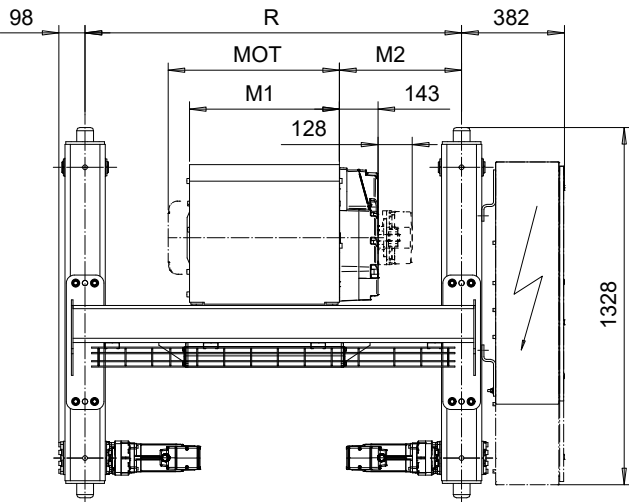
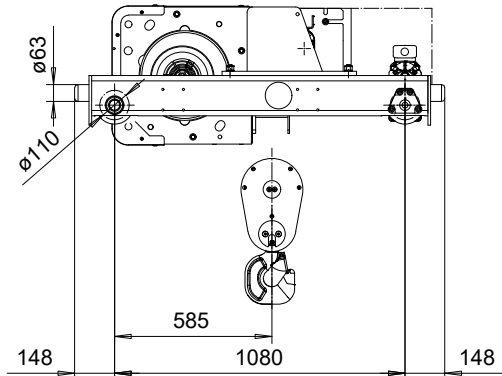
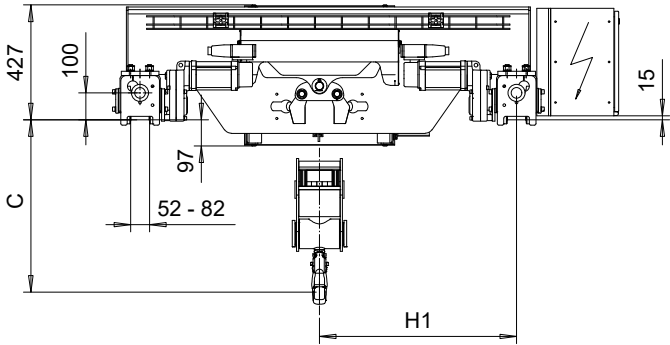


DOUBLE GIRDER, MEDIUM, 2 PART DOUBLE
Hoist type:
SX5 022...D0

SI-60Hz



| Headroom - C dimension | |
|--------------------------------------|--------|
| Standard | 641 mm |
| with HS22 Hook operated limit switch | 691 mm |

| Motor | P5 | P6 | P7 | A5 | S5 | S7 |
|-------------|-----|-----|-----|-----|-----|-----|
| MOT (mm) | 578 | 578 | 618 | 498 | 606 | 757 |
| Weight (kg) | 58 | 85 | 105 | 45 | 53 | 81 |

| Load (kg) | Class Fem/ISO |
|-----------|---------------|
| 4000 | 3m/M6 |
| 5000 | 2m/M5 |

| HOL (m) | Length code | H1 (mm) | M1 (mm) | M2 (mm) | min R (mm) | Approx. Weight (kg) |
|---------|-------------|---------|---------|---------|------------|---------------------|
| 8.5 | D | 733 | 558 | 454 | 1400 | 660 |
| 13 | E | 733 | 678 | 394 | 1400 | 680 |
| 18 | F | 883 | 828 | 469 | 1700 | 730 |
| 25 | G | 883 | 1018 | 374 | 1700 | 760 |
| 33.5 | H | 1033 | 1268 | 399 | 2000 | 840 |
| 46 | J | 1233 | 1618 | 424 | 2400 | 925 |

Note:
 R is standard gauge, minimum gauge with second brake or service platform
 Primary brake is mounted on gearcase for drum lengths H and J
 Standard rail gauge increments: 1400, 1700, 2000, and 2400 mm
 Approx. Weight calculated with P5 motor.

This document is the absolute property of R&M Materials Handling, Inc. This document must not be copied without the written permission of R&M Materials Handling, Inc. The contents thereof must not be disclosed to a third party nor be used for any unauthorized purpose. Contravention will be prosecuted.

| | | |
|-----------------------------|---|-----------|
| ETTPAL | ETTPAL | QC-M-22 |
| Design | Chd | Apppt |
| 2002-08-30 | TROLLEY; DOUBLE GIRDER | |
| Date | MEDIUM, 2x2 ROPE FALLS | |
| SLEQDQCV | Folder | |
| Owner Dept | Issue | |
| R&M MATERIALS HANDLING INC. | R&M MATERIALS HANDLING, INC. HOIST & CRANE PRODUCTS SPRINGFIELD, OHIO | D007171-A |
| D007171-a_3 | | 4 |