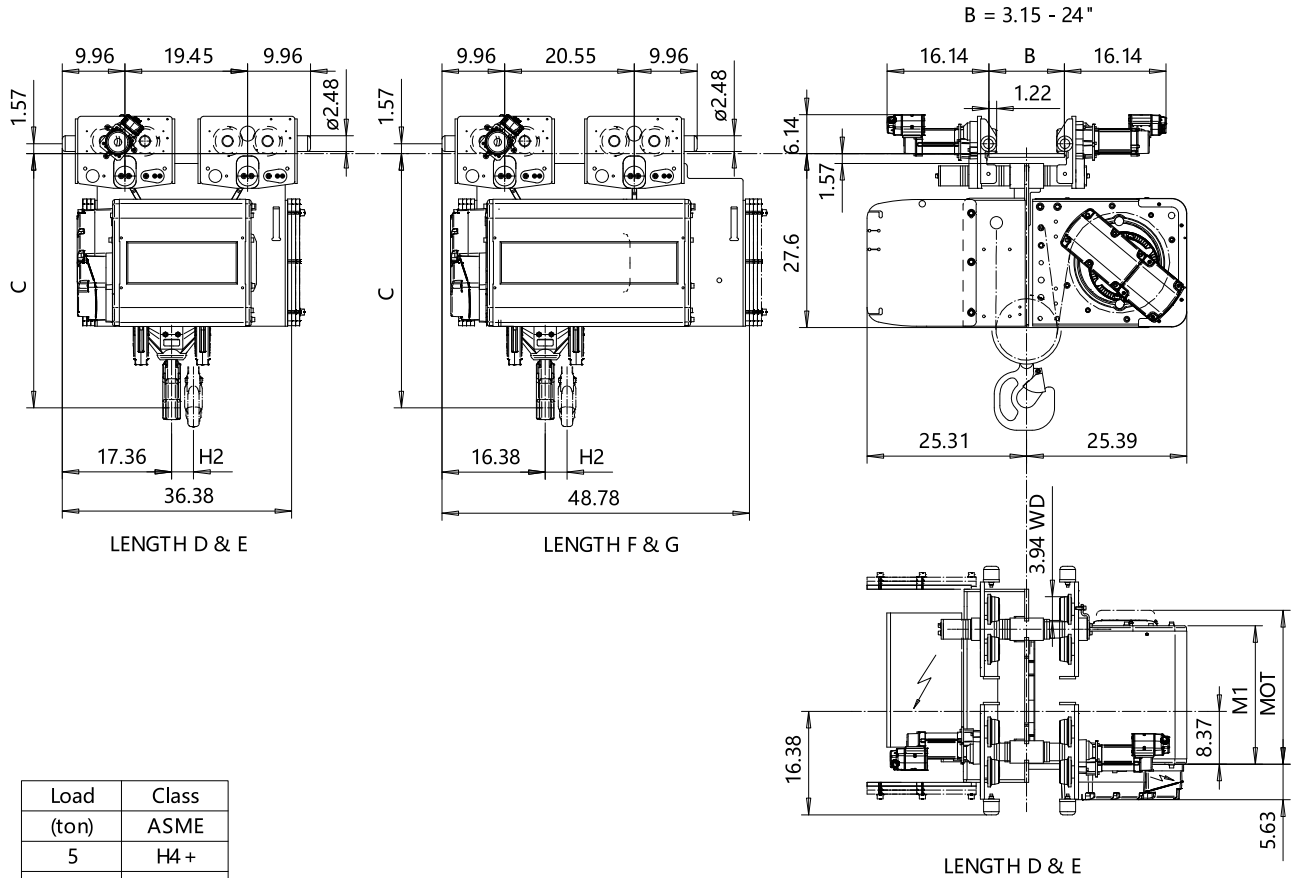


NORMAL HEADROOM, 4 PART SINGLE
Hoist type:
SX5 041...N0

US-60Hz



Load (ton)	Class ASME
5	H4 +
6	H4 +
7 1/2	H4 +
10	H4

Motor	P5	P6	P7	A5	S5	S7
MOT (in)	22.76	22.76	24.33	19.61	23.86	29.8
Weight (lb)	128	187	231	99	117	179

HOL (ft)	Length code	M1 (inch)	H2 (inch)	Approx Weight (lb)
29'-6"	D	21.97	3.46	1742
39'-4"	E	26.69	4.64	1874
52'-5"	F	32.6	6.14	2050
65'-7"	G	45.55	8.03	2183

Headroom - C dimension	
Standard	40 3/4"
with HS22 Hook operated limit switch	45 1/16"

Approx. Weight calculated with P5 motor.

This document is the absolute property of R&M Materials Handling, Inc. This document must not be copied without the written permission of R&M Materials Handling, Inc. The contents thereof must not be disclosed to a third party nor be used for any unauthorized purpose. Contravention will be prosecuted.

ETPAL Design	ETPAL Chd	Appd	Ref Drawing	QC-N-04
2002-08-30 Date	TROLLEY; NORMAL HEADROOM			1:13
SLEODOCV Owner Dept	4 ROPE FALLS			For Mar
R&M MATERIALS HANDLING INC.	R&M MATERIALS HANDLING INC. HOIST & CRANE PRODUCTS SPRINGFIELD, OHIO	D002120-A		Issue 10