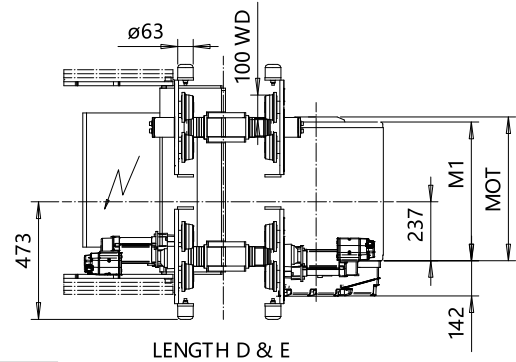
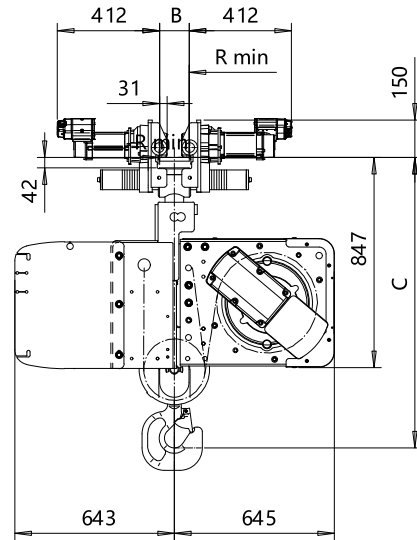
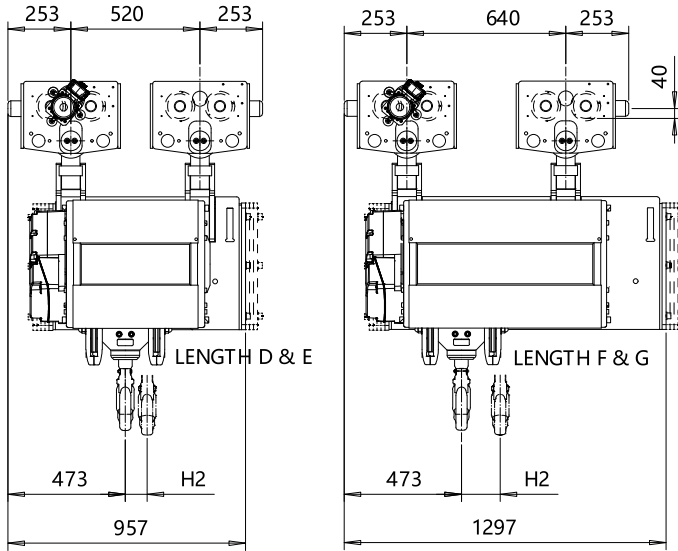


NORMAL HEADROOM, CURVED TRACK, 4 PART SINGLE

Hoist type:

SX5 041...N0

SI



Load (kg)	Class Fem/ISO
5000	3m/M6
6300	3m/M6
8000	3m/M6
10000	2m/M5

TRACK RADIUS	
Flange, B (mm)	R min (mm)
90 - 109	2500
110 - 119	2000
120 - 350	1500

Motor	P5	P6	P7	A5	S5	S7
MOT (mm)	578	578	618	498	606	757
Weight (kg)	58	85	105	45	53	81

HOL (m)	Length code	M1 (mm)	H2 (mm)	Approx Weight (kg)
9	D	558	88	880
12	E	678	118	930
16	F	828	156	1000
20	G	1018	204	1090

Headroom - C dimension	
Standard	1180 mm
with HS22 Hook operated limit switch	1290 mm

Approx. Weight calculated with P5 motor.

This document is the absolute property of R&M Materials Handling, Inc. This document must not be copied without the written permission of R&M Materials Handling, Inc. The contents thereof must not be disclosed to a third party nor be used for any unauthorized purpose. Contravention will be prosecuted.

ETTVPH Design	ETTVPH Chd	Appd	Ref Drawing	QC-N-04
2005-06-20 Date	TROLLEY; NORMAL HEADROOM			1 of 13
SLEDDOCV Owner/Dept	CURVED TRACK, 4 ROPE FALLS			For Mar
R&M MATERIALS HANDLING INC.	R&M MATERIALS HANDLING, INC. HOIST & CRANE PRODUCTS SPRINGFIELD, OHIO	D004136-A		Issue 5