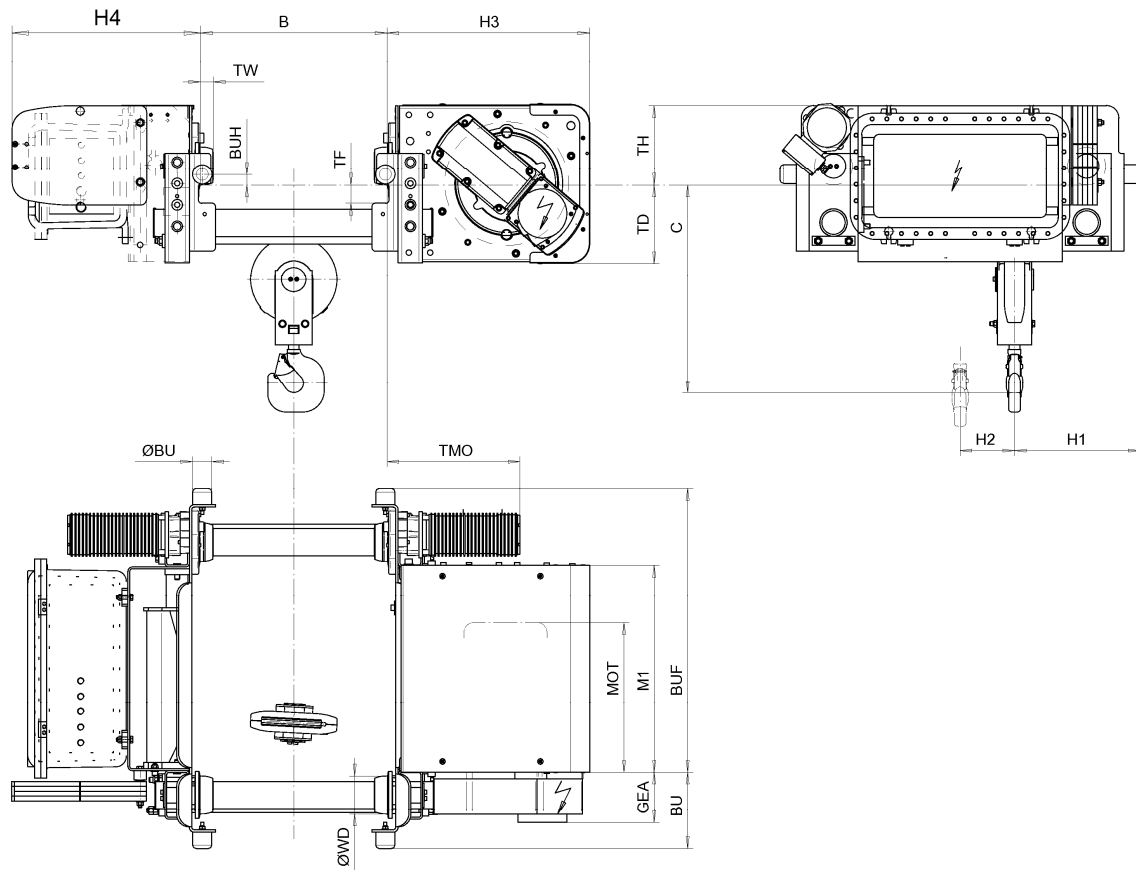


Low Headroom Hoist EXSX5, REEVING: 021; Class I, Division 2



D007590-A

Hoist dimensions

HOL m	Length code	M1 mm	H1 mm	H2 mm	H3 mm	H3* mm	H4 mm	BUF mm	Weight kg
24	E	678	411	235	663	683	617	928	886
32	F	828	411	309	663	683	617	1078	959

Motor dimensions

Motor	P5	P6
MOT (mm)	578	578
Weight (kg)	58	85

Trolley dimensions

B min.	B max.	ØBU	ØWD	BU	BUH	GEA	TD	TF	TH	TMO	TW
100	610	63	125	250	35	165	256	59	268	435	41.5

D007590-A
252066

C-dimensions

B	C
100 - 199	700
200 - 259	660
260 - 439	660
440 - 540	640
541 - 610	680

Note: Weight calculated with P5 motor when B=610 mm.

Note: All dimensions in mm.

* Please, disregard the dimension H3*.