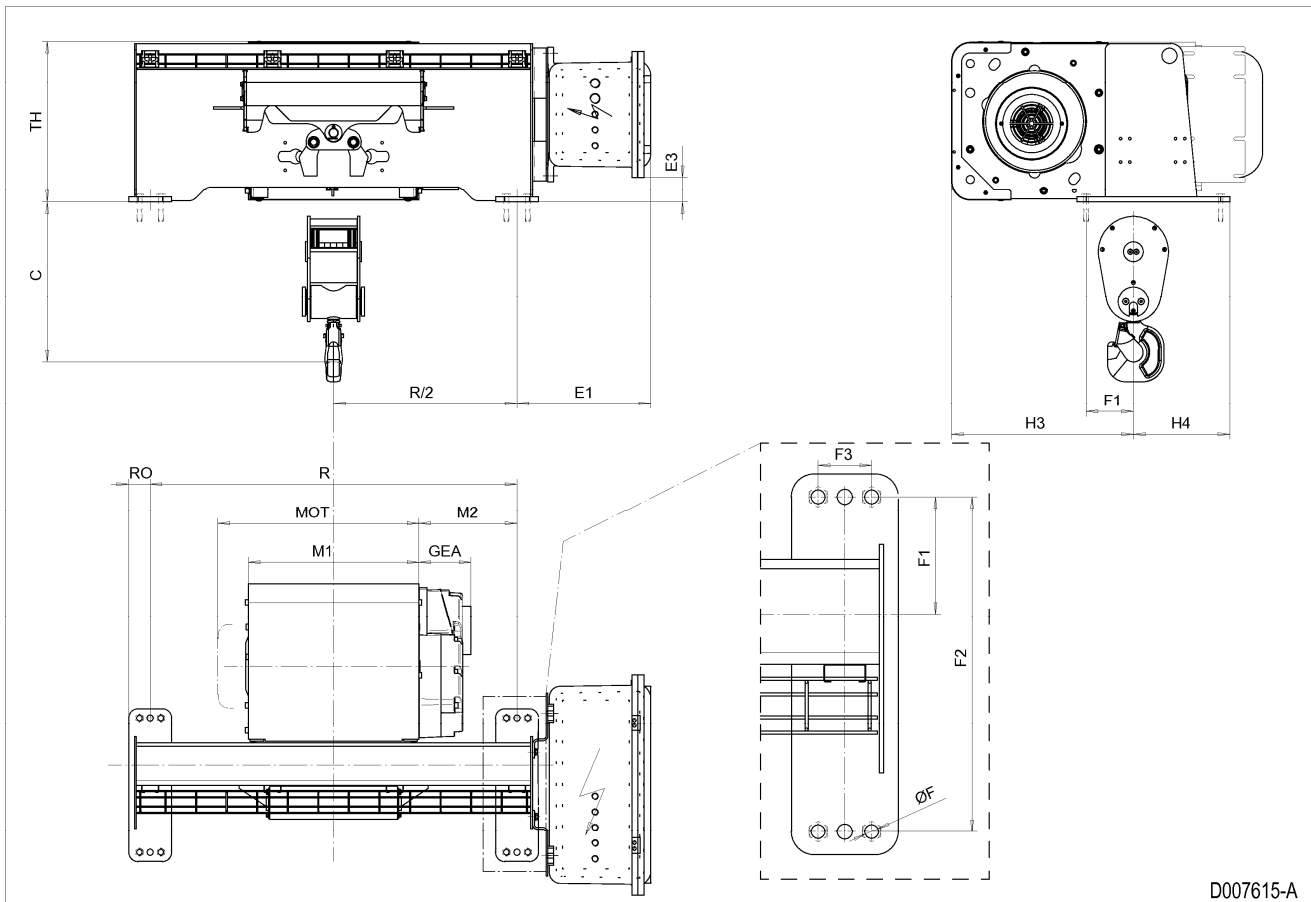


Fixed Hoist EXSX5, REEVING: 022; Class I, Division 2



Hoist dimensions

HOL ft	Length code	M1 inch	M2 inch	Min R inch	H3 inch	H3* inch	Weight lb
27'-11"	D	21.97	12.64	47.24	23.43	24.21	1636
42'-8"	E	26.69	10.28	47.24	23.43	24.21	1691
59'-1"	F	32.6	7.32	47.24	23.43	24.21	1762
82'-0"	G	40.08	3.58	47.24	23.43	24.21	1940
109'-11"	H	49.92	8.5	66.93	23.43	24.21	2046
150'-11"	J	63.7	7.52	78.74	23.43	24.21	2256

Motor dimensions

Motor	P5	P6
MOT (inch)	22.76	22.76
Weight (lb)	128	187

Trolley dimensions

C	ØF	E1	E3	F1	F2	F3	GEA	H4	RO	TH
20.59	0.71	17.23	3.19	6.1	17.32	2.76	6.69	12.4	2.76	20.75

D007615_A
252820

Note: All dimensions in inch.

Note: Weight calculated with P5 motor.

Note: M2 and weight calculated with Min R.

Note: Standard rail gauges: 47.2, 66.9 and 78.7.

* Please, disregard the dimension H3*.