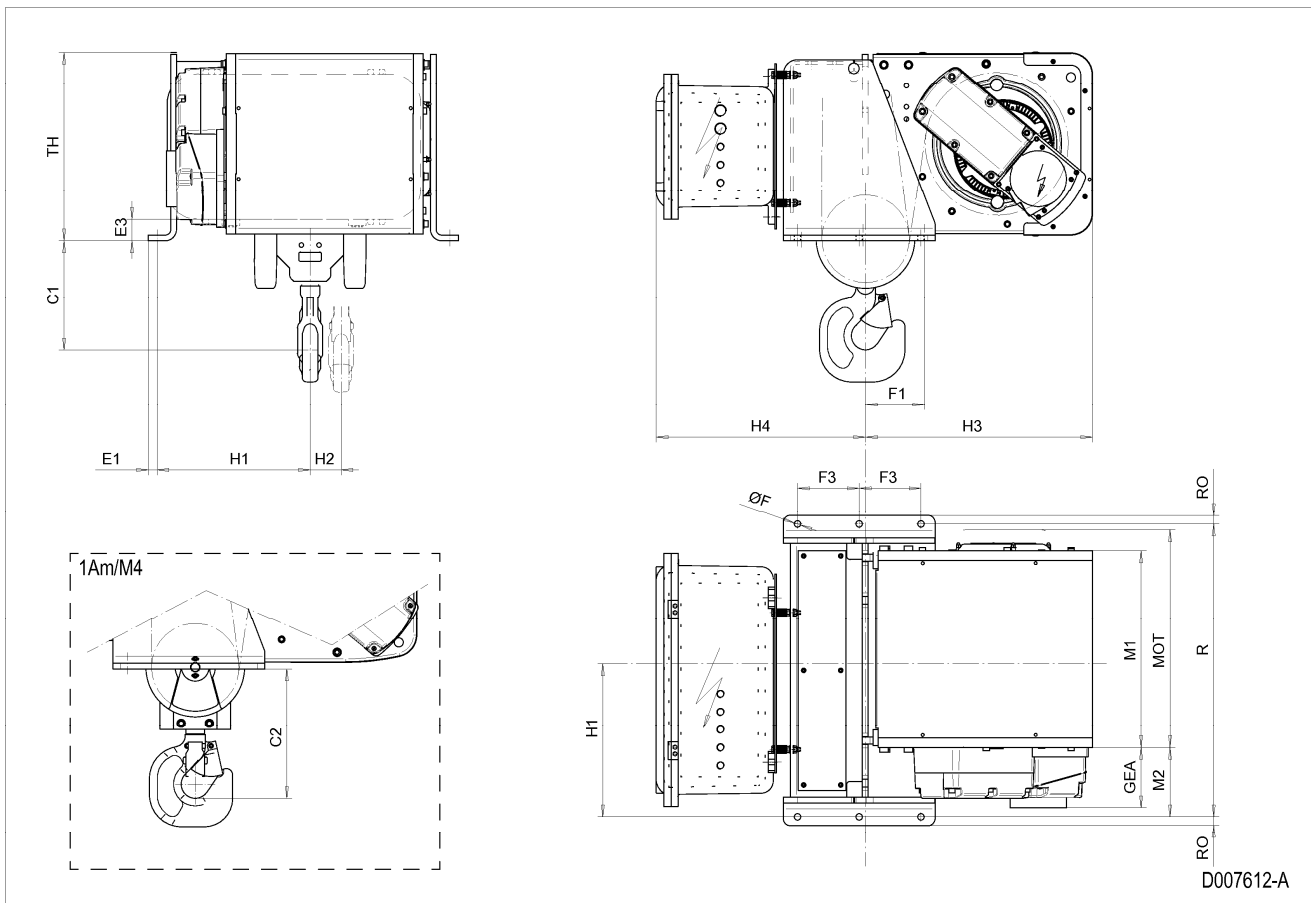


Fixed Hoist EXSX5, REEVING: 041; Class I, Division 2



D007612-A

Hoist dimensions

HOL m	Length code	M1 mm	M2 mm	H1 mm	H2 mm	H3 mm	H3* mm	R mm	Weight kg
9	D	558	196	434	88	645	665	830	744
12	E	678	76	314	118	645	665	830	778
16	F	828	76	314	156	645	665	1170	846
20	G	1018	76	314	204	645	665	1170	886

Motor dimensions

Motor	P5	P6
MOT (mm)	578	578
Weight (kg)	58	85

Trolley dimensions

C1	C2	ØF	E1	E3	F1	F3	GEA	H4	RO	TH
310	367	18	25	61.1	168	175	170	664	25	535.6

D007612_A
252816

Note: All dimensions in mm.

Note: Weight calculated with P5 motor.

* Please, disregard the dimension H3*.