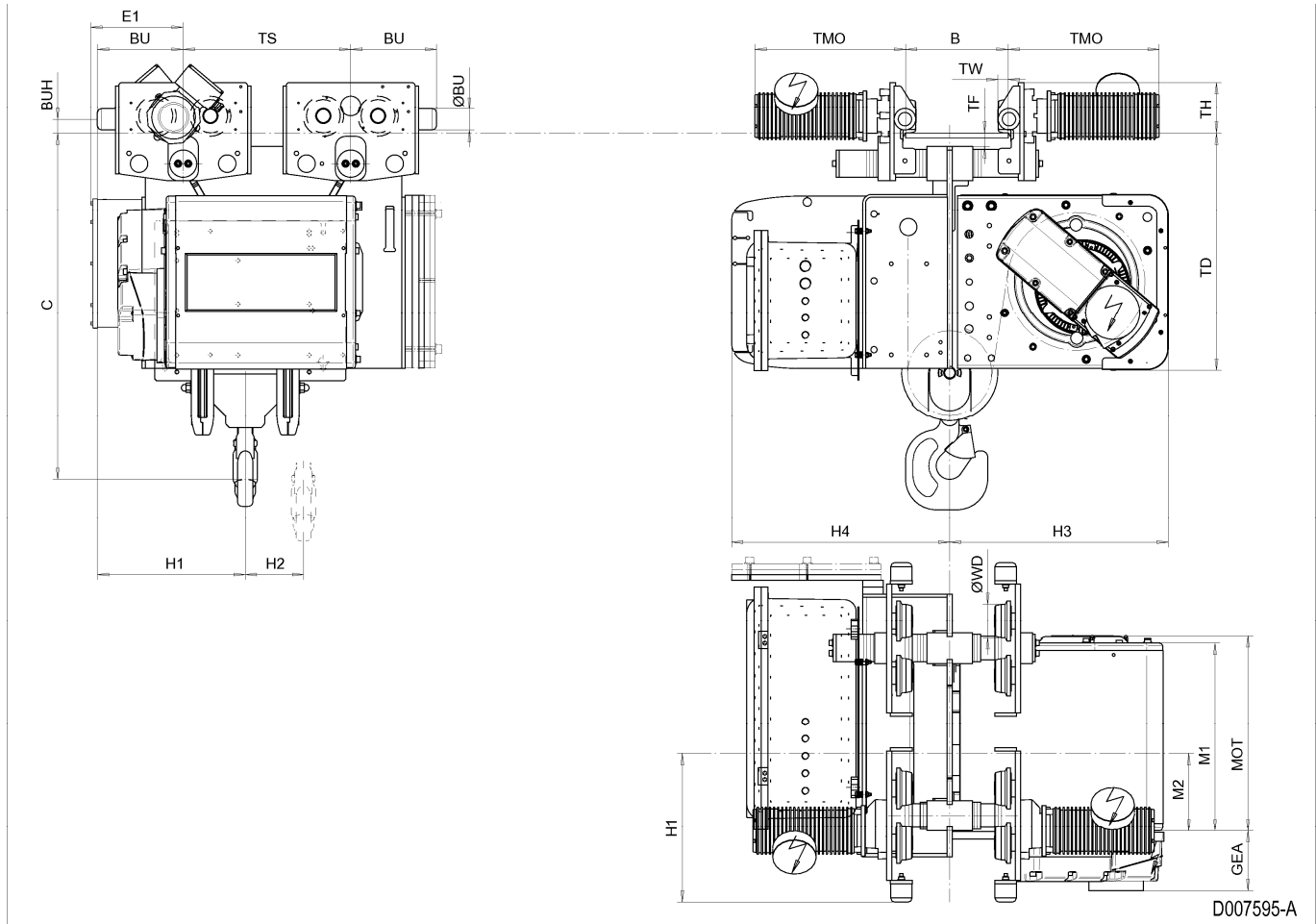


Normal Headroom Hoist EXSX5, REEVING: 041; Class I, Division 2



**Hoist dimensions**

HOL m	Length code	M1 mm	M2 mm	H1 mm	H2 mm	H3 mm	H3* mm	H4 mm	Weight kg
9	D	558	232	436	88	649	669	643	934
12	E	678	232	436	118	649	669	643	968
16	F	828	258	436	156	649	669	643	1055
20	G	1018	258	436	204	649	669	643	1095

**Motor dimensions**

Motor	P5	P6
MOT (mm)	578	578
Weight (kg)	58	85

**Traveling dimensions**

Motor	MF06LA
TMO (mm)	400
Weight (kg)	7.8

**Trolley dimensions**

B min	B max	C	ØWD	ØBU	BU	BUH	GEA	M2	TD	TF	TH
80	610	1024	100	63	253	40	170	228	700	40	150
TW											
31											

Length code	E1	TS
D/E	273	494
F/G	148	522

D007595-A  
252236

Note: All dimensions in mm.

Note: Weight calculated with P5 and MF06LA motors, when B=300 mm.

\* Please, disregard the dimension H3\*.