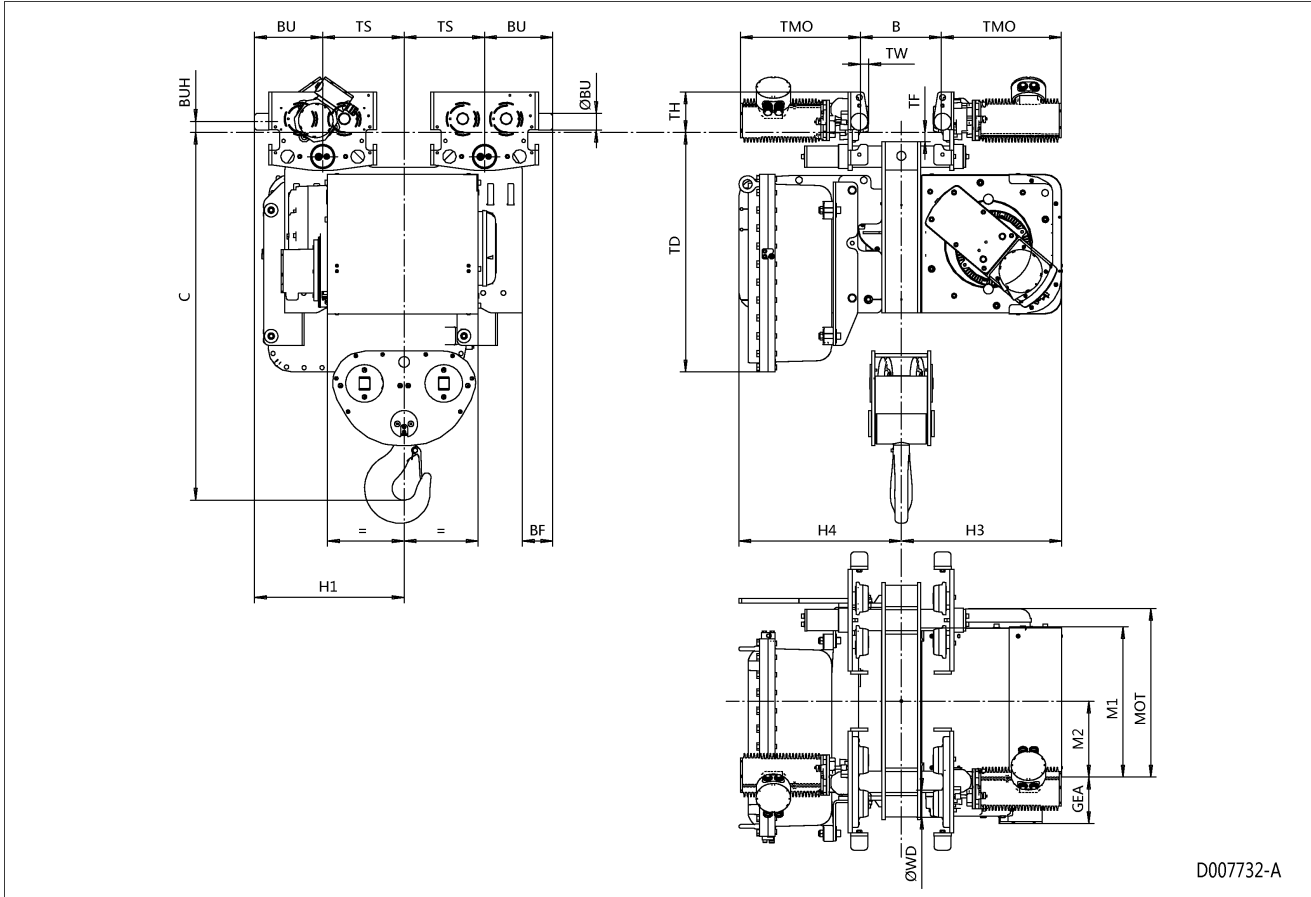


Normal Headroom Hoist EXSX5, REEVING: 042; Class I, Division 1



Hoist dimensions

HOL m	Length code	M1 mm	M2 mm	H1 mm	H3 mm	H3* mm	H4 mm	Weight kg
4	D	558	279	553	595	615	602	1100
6.5	E	678	339	553	595	615	602	1130
9	F	828	414	553	595	615	602	1160
12.5	G	1018	509	753	595	615	602	1295
16.5	H	1268	634	753	595	615	602	1350
23	J	1618	809	753	595	615	602	1425

Motor dimensions

Motor	E4	E6
MOT (mm)	673	673
Weight (kg)	145	145

Traveling dimensions

Motor	MF07E
TMO (mm)	445
Weight (kg)	13

Trolley dimensions

B min	B max	C	ØBU	ØWD	BU	BUH	GEA	TD	TF	TH	TW
90	610	1365	63	100	253	40	172	690	35	150	31

Trolley dimensions

Length code	BF	TS
D/E/F	113	300
G/H/J	-77	500

35 NORMAL HEADROOM HOIST EXSX5, REEVING: 042

35.1 Class I, Division 1

Hoist dimensions

HOL m	Length code	M1 mm	M2 mm	H1 mm	H3 mm	H3* mm	H4 mm	Weight kg
4	D	558	279	553	595	615	602	1100
6.5	E	678	339	553	595	615	602	1130
9	F	828	414	553	595	615	602	1160
12.5	G	1018	509	753	595	615	602	1295
16.5	H	1268	634	753	595	615	602	1350
23	J	1618	809	753	595	615	602	1425

Motor dimensions

Motor	E4	E6
MOT (mm)	673	673
Weight (kg)	145	145

Traveling dimensions

Motor	MF07E
TMO (mm)	445
Weight (kg)	13

Trolley dimensions

B min	B max	C	ØBU	ØWD	BU	BUH	GEA	TD	TF	TH	TW
90	610	1365	63	100	253	40	172	890	35	150	31

Trolley dimensions

Length code	BF	TS
D/E/F	113	300
G/H/J	-77	500

D007732-A
315552

Note: Weight calculated with E6 and MF07E motors, when B=300 mm.

Note: All dimensions in mm.

* Please, disregard the dimension H3*.