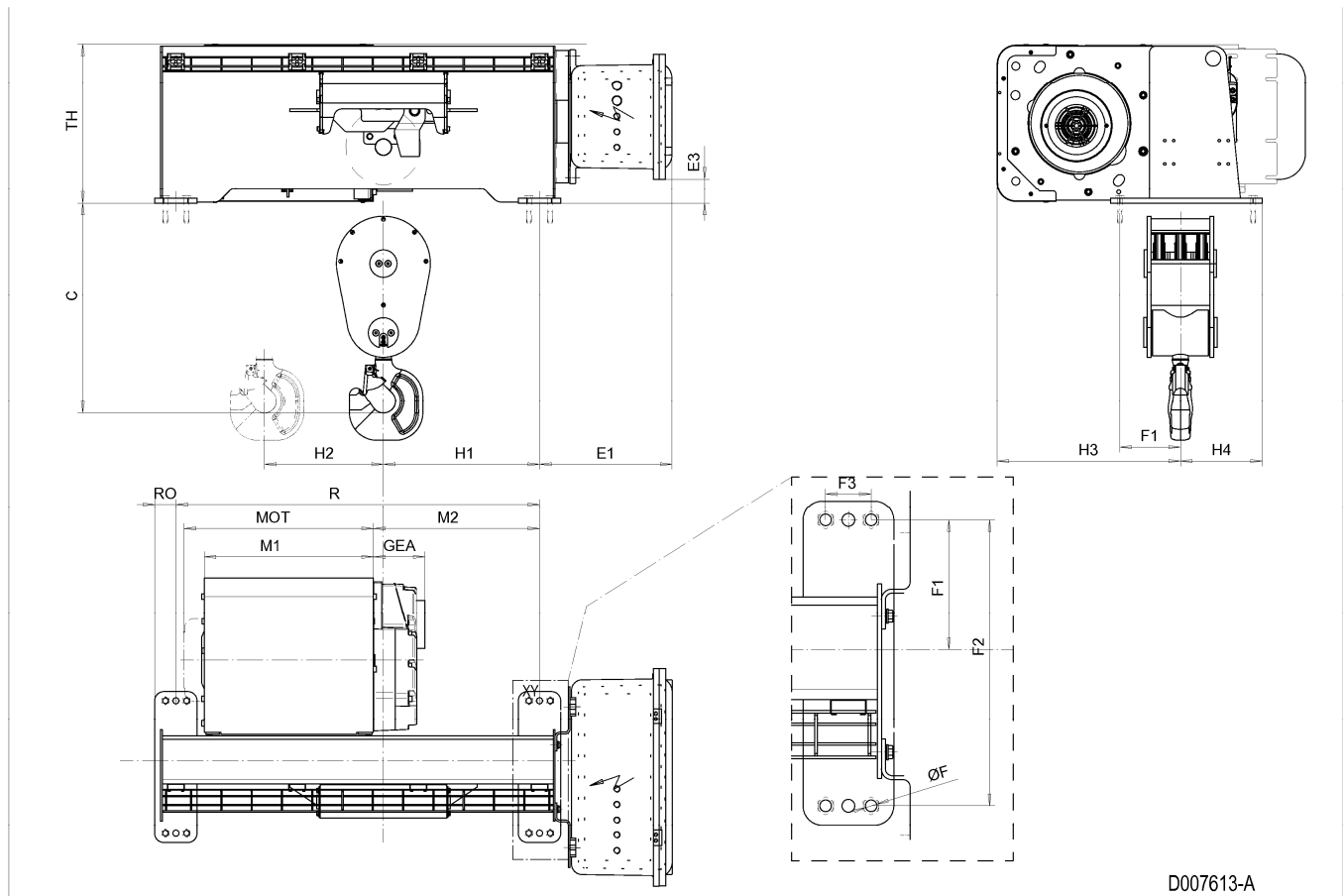


Fixed Hoist EXSX5, REEVING: 061; Class I, Division 2



D007613-A

**Hoist dimensions**

HOL m	Length code	M1 mm	M2 mm	Min R mm	H1 mm	H2 mm	H3 mm	H3* mm	Weight kg
6	D	558	548	1200	515	53	605	625	819
8	E	678	628	1400	595	78	605	625	860
10	F	828	778	1700	745	98	605	625	915
13	G	1018	888	2000	855	132	605	625	980

**Motor dimensions**

Motor	P5	P6
MOT (mm)	578	578
Weight (kg)	58	85

**Trolley dimensions**

C	ØF	E1	E3	F1	F2	F3	GEA	H4	RO	TH	
693	18	437.6	81.6	200	440	70	170	270	70	527.1	

D007613\_A  
252817

Note: All dimensions in mm.

Note: Weight calculated with P5 motor.

Note: H1, M2 and weight calculated with Min R.

Note: Standard rail gauges: 1200, 1400, 1700, 2000 and 2400.

\* Please, disregard the dimension H3\*.