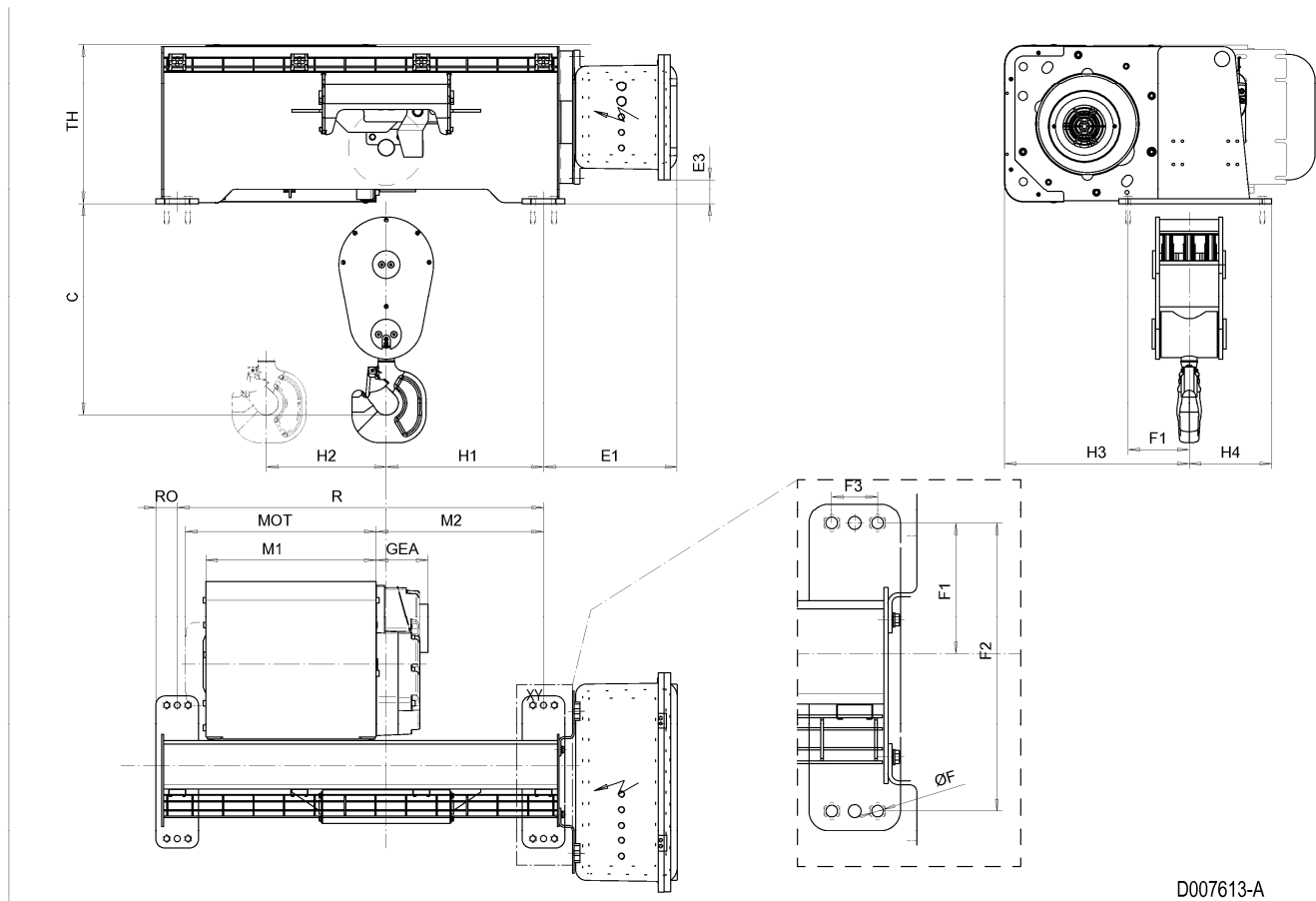


Fixed Hoist EXSX5, REEVING: 061; Class I, Division 2



D007613-A

Hoist dimensions

HOL ft	Length code	M1 inch	M2 inch	Min R inch	H1 inch	H2 inch	H3 inch	H3* inch	Weight lb
19'-8"	D	21.97	21.57	47.24	20.28	2.09	23.82	24.61	1806
26'-3"	E	26.69	24.72	55.12	23.43	3.07	23.82	24.61	1896
32'-10"	F	32.6	30.63	66.93	29.33	3.86	23.82	24.61	2018
42'-8"	G	40.08	34.96	78.74	33.66	5.2	23.82	24.61	2161

Motor dimensions

Motor	P5	P6
MOT (inch)	22.76	22.76
Weight (lb)	128	187

Trolley dimensions

C	ØF	E1	E3	F1	F2	F3	GEA	H4	RO	TH	
27.28	0.71	17.23	3.21	7.87	17.32	2.76	6.69	10.63	2.76	20.75	

D007613_A
252817

Note: All dimensions in inch.

Note: Weight calculated with P5 motor.

Note: H1, M2 and weight calculated with Min R.

Note: Standard rail gauges: 47.2, 55.1, 66.9, 78.7 and 94.5.

* Please, disregard the dimension H3*.