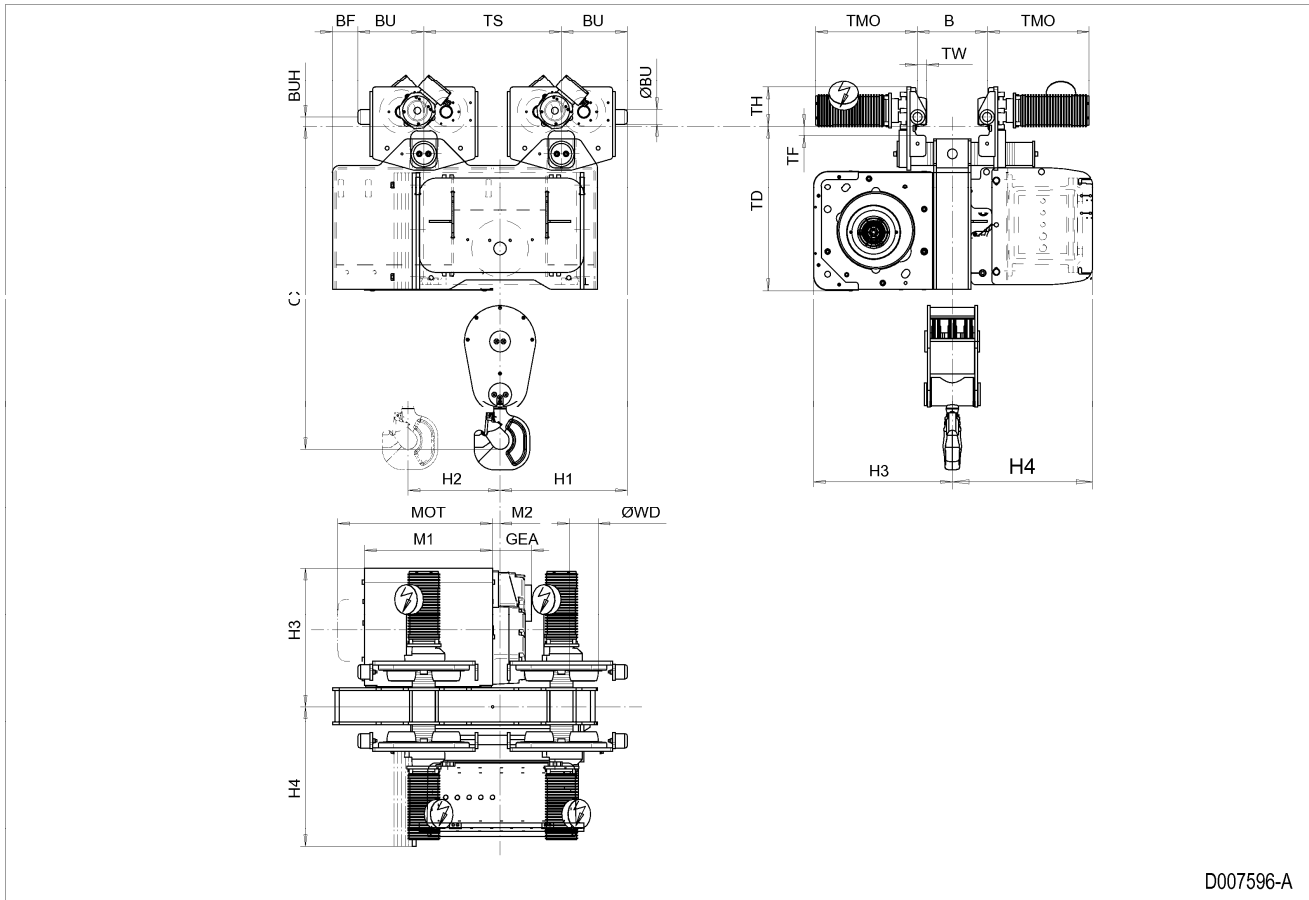


Normal Headroom Hoist EXSX5, REEVING: 061; Class I, Division 2



D007596-A

Hoist dimensions

HOL m	Length code	M1 mm	M2 mm	H1 mm	H2 mm	H3 mm	H3* mm	H4 mm	Weight kg
6	D	558	33	556	53	605	625	612	1107
8	E	678	33	556	78	605	625	612	1132
10	F	828	33	596	98	605	625	612	1203
13	G	1018	33	596	132	605	625	612	1243

Motor dimensions

Motor	P5	P6	E4	E6
MOT (mm)	578	578	683	683
Weight (kg)	58	85	145	145

Traveling dimensions

Motor	MF06LA
TMO (mm)	398
Weight (kg)	7.8

Trolley dimensions

B min	B max	C	ØWD	ØBU	BU	BUH	GEA	TF	TD	TH	TW
110	610	1413	125	63	288	40	170	40	716	170	41.5

Trolley dimensions

Length code	BF	TS
D/E	110	600
F/G	370	720

D007596_A
252282

Note: All dimensions in mm.

Note: Weight calculated with P5 and MF06LA motors, when B=300 mm

* Please, disregard the dimension H3*.