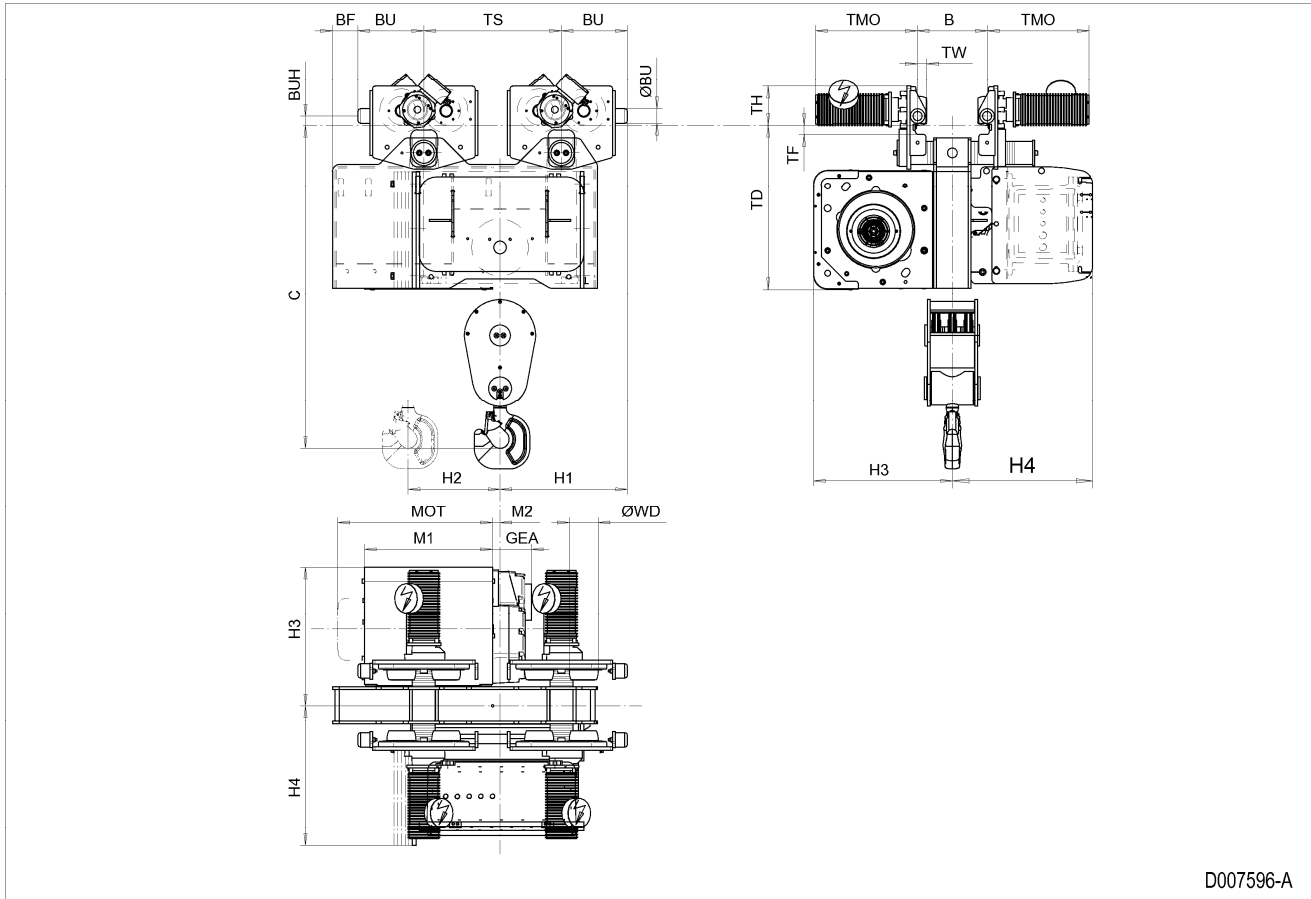


Normal Headroom Hoist EXSX5, REEVING: 061; Class I, Division 2



D007596-A

Hoist dimensions

HOL ft	Length code	M1 inch	M2 inch	H1 inch	H2 inch	H3 inch	H3* inch	H4 inch	Weight lb
19'-8"	D	21.97	1.3	21.89	2.09	23.82	24.61	24.09	2441
26'-3"	E	26.69	1.3	21.89	3.07	23.82	24.61	24.09	2496
32'-10"	F	32.6	1.3	23.46	3.86	23.82	24.61	24.09	2653
42'-8"	G	40.08	1.3	23.46	5.2	23.82	24.61	24.09	2741

Motor dimensions

Motor	P5	P6	E4	E6
MOT (inch)	22.76	22.76	26.89	26.89
Weight (lb)	128	187	320	320

Traveling dimensions

Motor	MF06LA
TMO (inch)	15.67
Weight (lb)	17

Trolley dimensions

B min	B max	C	ØWD	ØBU	BU	BUH	GEA	TF	TD	TH	TW
4.33	24.02	55.63	4.92	2.48	11.34	1.57	6.69	1.57	28.19	6.69	1.63

Trolley dimensions

Length code	BF	TS
D/E	4.33	23.62
F/G	14.57	28.35

D007596_A
252282

Note: All dimensions in inch.

Note: Weight calculated with P5 and MF06LA motors, when B=11.8 inch

* Please, disregard the dimension H3*.