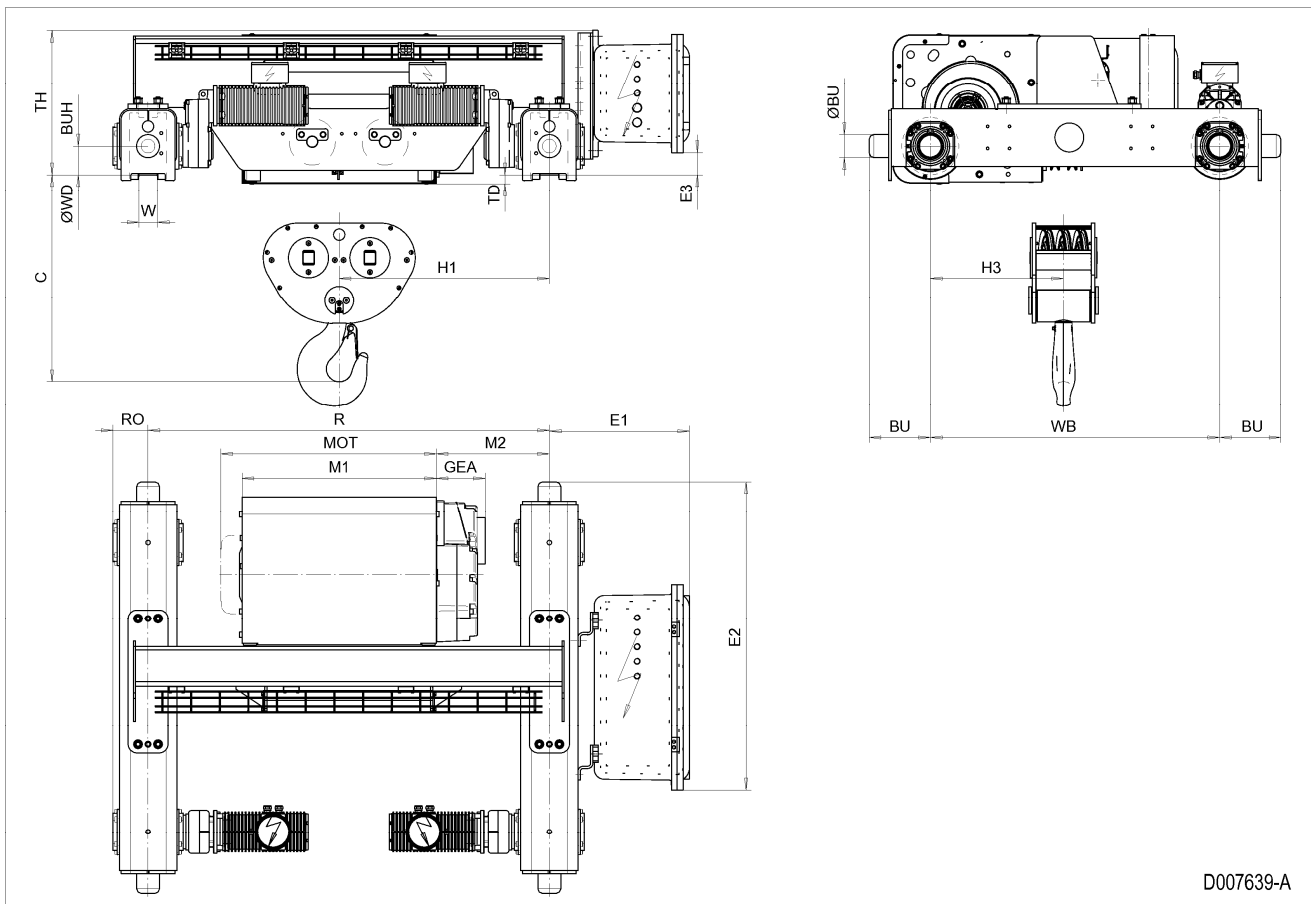


Double Girder Hoist EXSX5, REEVING: 062; Class I, Division 2



D007639-A

**Hoist dimensions**

HOL m	Length code	H1 mm	M1 mm	M2 mm	Min R mm	Weight kg
4	E	733	678	394	1400	1191
6	F	883	828	469	1700	1247
8	G	883	1018	374	1700	1287
11	H	1033	1268	399	2000	1364
15	J	1233	1618	424	2400	1467

**Motor dimensions**

Motor	P5	P6
MOT (mm)	578	578
Weight (kg)	58	85

**Trolley dimensions**

C	ØBU	BU	BUH	E1	E2	E3	GEA	H3	WB	ØWD	W min
723	80	213	100	488.8	1076.7	77.5	170	465	1010	200	54
W max	RO	TD	TH								
99	122	32	504.6								

D007639\_A  
252857

Note: All dimensions in mm.

Note: Weight calculated with P5 motor.

Note: Min R with service platform.

Note: Standard rail gauges: 1400, 1700, 2000 and 2400.

Note: H1, M2 and weight calculated with Min R.

Note: Flangeless wheels available.